



**LINE PULLING SWIVELS
RELEASE TORQUE AND
AVOID POTENTIAL DAMAGE
TO CABLES AND GRIPS**

LINE PULLING SWIVELS

LINE PULLING SWIVEL
STANDARD ENDS



LINE PULLING SWIVEL
BULL NOSE

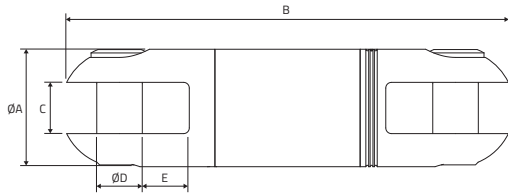


Swivels are designed for use in stringing high tension wires for electrical transmission and distribution. They are important in pulling when the lines develop torsion during the installation. This torsion must be released. Use of a swivel will release torque and prevent it from reaching dangerous levels, which can cause damage to the cable or grip.

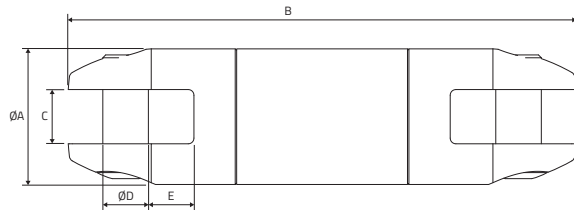
Slingco also offers a 'bull nose' style swivel designed for underground and overhead applications.

All swivels are stringently quality tested and inspected to ensure optimum performance and reliability.

LINE PULLING SWIVEL – STANDARD ENDS



LINE PULLING SWIVEL – BULL NOSE



SAFETY NOTE: All Slingco Line Pulling Swivels are designed for straight line pulling and will not support side loads as would be encountered traveling over a bull wheel. Swivel selection should be based on pulling line diameter, sock size, opening dimensions, pin sizes, working load, and sheave groove diameter. Swivels are not designed for general lifting.

Slingco Part No.	Safe working load		Ø A in (mm)	B Length in (mm)	C Slot width in (mm)	D Pin Ø in (mm)	Ø E Recess in (mm)	Weight lb (kg)
	3:1	5:1						
LINE PULLING SWIVEL – STANDARD ENDS – BRIGHT ZINC PLATED STEEL								
ZSW2091	2,250 (10)	1,350 (6)	0.87 (22)	3.37 (85.6)	0.39 (10)	0.31 (8)	0.39 (10)	0.43 (0.19)
ZSW2092	3,500 (15.5)	2,100 (9.3)	0.98 (25)	3.98 (101.1)	0.43 (11)	0.39 (10)	0.43 (11)	0.56 (0.25)
ZSW2093	5,000 (22)	3,000 (13.2)	1.26 (32)	4.96 (126)	0.55 (14)	0.39 (10)	0.55 (14)	1.13 (0.51)
ZSW2094	7,000 (31.1)	4,200 (18.7)	1.38 (35)	5.22 (132.7)	0.55 (14)	0.49 (12.5)	0.54 (13.8)	1.44 (0.65)
ZSW2096	10,000 (44.5)	6,000 (26.7)	1.62 (41.25)	6.11 (155.1)	0.71 (18)	0.63 (16)	0.65 (16.5)	2.35 (1.07)
ZSW2097	15,000 (66)	9,000 (39.6)	2.09 (53)	7.34 (186.4)	0.79 (20)	0.71 (18)	0.83 (21)	4.59 (2.08)
LINE PULLING SWIVEL – BULL NOSE - GALVANIZED								
ZSW2649	4,000 (17.8)	2,400 (10.7)	1.26 (32)	4.74 (120.5)	0.61 (15.5)	0.37 (9.5)	0.52 (13.25)	1.01 (0.46)
ZSW2929	8,000 (35.5)	4,800 (21.4)	1.50 (38)	5.38 (136.6)	0.63 (16)	0.43 (11)	0.61 (15.5)	1.75 (0.80)
ZSW6122	10,000 (44.5)	6,000 (26.7)	1.87 (47.6)	7.02 (178.3)	0.75 (19.05)	0.63 (16)	0.63 (16)	3.72 (1.69)
ZSW6123	16,000 (71.2)	9,600 (42.7)	2.44 (62)	10.15 (257.7)	1.00 (25.4)	0.87 (22)	1.12 (28.5)	9.19 (4.17)
ZSW2857	30,000 (134)	18,000 (80)	2.50 (63.5)	11.13 (282.6)	1.00 (25.4)	0.87 (22.2)	1.13 (28.6)	10.44 (4.74)

Swivel and Cable Grip match-up

Approx. breaking strength of cable grip (lb)	Cable grip color code	Size range O.D. (in)	Recommended swivel	Safe working load of swivel (lb)	Revolving Eye	Flexible Eye MU
7,000	Dark green	0.25 - 0.50	ZSW2092	3,500	ZCS2177	ZCS1710
10,500	Brown	0.50 - 0.75	ZSW2093	5,000	ZCS2178	ZCS1711
14,100	Light blue	0.75 - 1.00	ZSW2093	5,000	ZCS2179	ZCS1712
25,000	Gold	1.00 - 1.25	ZSW2096	10,000	ZCS2180	ZCS1713
31,000	Black	1.25 - 1.50	ZSW2096	10,000	ZCS2181	ZCS1714
31,000	Red	1.50 - 1.75	ZSW2096	10,000	ZCS2182	ZCS1715
43,000-49,000	Dark blue	1.75 - 2.25	ZSW2097	15,000	ZSC2183*	ZCS1716†

Note: The above is intended as a rough guide. The recommended working load should be determined by the competent person(s) using the cable grip and/or Slingco swivel.

FOR ANY INQUIRIES CALL TODAY ON

888 685 9478

Slingco America, Inc.

3100 Jonquil Drive SE, Smyrna, Georgia, 30080, USA

TOLL FREE: 888 685 9478 · sales@slingcoamerica.com



slingcoamerica.com