

**POLE LINE HARDWARE
A SOLUTIONS-BASED APPROACH**



A UNIQUE, SOLUTIONS-BASED APPROACH TO POLE LINE HARDWARE PROVISION



This makes transition to the Slingco brand easy, but also gives standards engineers the opportunity to work with us on new projects and designs.

Often, choosing pole line hardware has to be by 'closest match' - the nearest similar product a supplier has available. While this can often suffice, it means that jobs have to be undertaken with a less than perfect product for the task in hand.

Wouldn't it be great if it was possible to source product equivalents that comply with standards, meaning that you were able to work with exactly what you need at a price you can afford? That's what we undertake to deliver with our unique 'Solution Approach'.

Once the Pole Line Hardware is approved, we keep the product in stock for immediate shipping whenever needed.



We work with Utilities and Contractors through distributors to provide a cost-saving approach to Pole Line Hardware. Instead of simply offering a range that's similar to what's already in use, we offer an equivalent to standards-compliant products, manufactured to the exact specifications you need.



STANDARDS-COMPLIANT POLE LINE HARDWARE - MANUFACTURED TO THE EXACT SPECIFICATION YOU NEED, AT A PRICE YOU CAN AFFORD

CALL SLINGCO AT 888 685 9478 AND LET US PUT OUR SOLUTION APPROACH TO WORK FOR YOU

POLE LINE SUSPENSION CLAMPS AND HOLD DOWN WEIGHTS

A SOLUTIONS-BASED SUCCESS

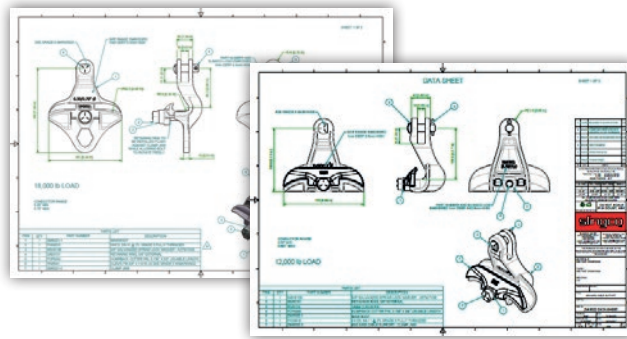


Our Suspension Clamps and Hold Down Weights are just two examples of pole line hardware products developed as part of our solutions-based approach.

They're standards-compliant product equivalents providing safe and quick installation and removal of conductors when attached to insulators. A single fastener fully opens and closes the jaw.

Now a Slingco inventoried product, the clamps come in a variety of sizes to accommodate conductors from 0.16 to 1.50 inch diameter, and loadings of up to 18,000 lbs. To prevent loss, all moving parts of the clamps are captive.

Depending on size, the clamps are either made from heat treated aluminum alloy 356-T6 or ductile iron 60-45-15 and hot dip galvanized for corrosion resistance.



Designed and developed by Slingco's in-house engineering team, our standards-compliant Pole Line Suspension Clamps are now available ex-stock

SUSPENSION CLAMPS

Slingco Part No.	Range (ins)
ZMI6320	0.16 – 0.43
ZMI6321	0.30 – 0.70
ZMI6322	0.50 – 0.687
ZMI6323	0.68 – 1.00
ZMI6324	1.00 – 1.313

HOLD DOWN WEIGHT

Slingco Part No.	Weight (lbs)	Dimensions (ins)
HMI5126	67	7.5 Ø x 6



SLINGCO - A COMPANY YOU CAN TRUST

WORLD-LEADING DESIGN, MANUFACTURE AND SUPPLY OF ENGINEERED SOLUTIONS FOR MORE THAN 40 YEARS



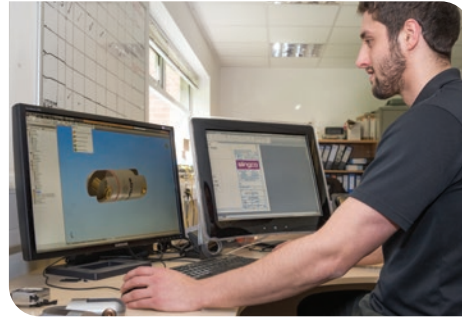
INNOVATION, QUALITY AND DEPENDABILITY

Slingco are a world-leading supplier of engineered solutions. Founded more than 40 years ago, we have evolved into an expert design and ISO9001 accredited manufacturing operation, producing high quality installation products for cable, conductor, wire, hose and fiber that are renowned for their high performance in the most challenging applications and environments.

EXPERIENCE YOU CAN DEPEND ON, PRODUCTS YOU CAN TRUST

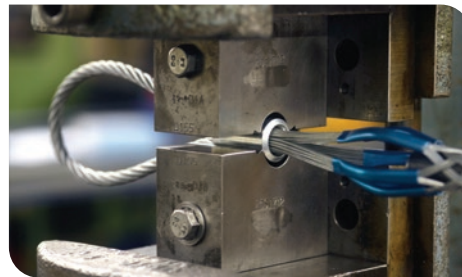
Our aim is to make products that give you confidence, combining tried and tested processes with the latest in 3D modeling and new product development.

An integral part of our manufacturing facility is our dedicated in-house design engineering



team. As well as being focused on our own design and development projects, our engineering team's skills are available to our customers.

Choose Slingco as your partner supplier and - from initial product design and manufacture to technical support and customer service - you can be assured of outstanding product availability, a responsive and efficient design/manufacturing team, and a genuine commitment to excellence in customer service.



DESIGN AND ENGINEERING

- Custom design and production of specialty components. From initial design, through modeling, FEA (Finite Element Analysis), rapid prototyping and testing to full production
- Design and development projects, utilizing our engineering team's skills, are available for new product development or customer projects
- Extensive product range, from stainless steel or non-metallic cable grips to down-hole cable protectors

METAL STAMPING AND PRESSING

- Volume manufacture of pressed or stamped components
- Carbon steel and stainless steel, including product and tooling design
- Product assembly, heat treatment and surface finishes

CASTING CAPABILITIES

- Initial design
- 3D modeling
- FEA prototyping and testing
- Gravity die-casting
- Sand casting
- Tool development
- Pre-production
- Full production

MACHINING

- In-house and offshore by certified and managed partners
- Aluminum, brass and steel CNC machining for turned, milled or any form of machined component
- Secondary processing for cast or fabricated products

SWAGING

- Innovators in wire rope swaging technology with capability to swage from 1mm to 40mm diameter wire rope
- Industry 'standard' or unique and custom cable end fittings and cable design
- Cold steel swaging, aluminum and copper 'Talurit' style swaging
- Specialist slings and hybrid slings giving the strength of steel and the feel of rope

CALL SLINGCO AT 888 685 9478 AND LET US PUT OUR SOLUTION APPROACH TO WORK FOR YOU

#1 UNDERSTAND

We work with you to understand your Pole Line Hardware needs.

#2 OFFERING

Offer a range of hardware that fits perfectly for you and your customer.

#3 PRICING

We undertake detailed costings to ensure we hit the right price point.

THE SLINGCO SOLUTION APPROACH

UNLIKE TRADITIONAL OFF-THE-SHELF PROVISION, WE WORK WITH YOU TO UNDERSTAND EXACTLY WHAT YOU NEED. WE THEN HANDLE EVERYTHING FROM SPECIFICATION TO APPROVALS, PRODUCT MANUFACTURE AND SHIPPING. YOU GET PRECISELY THE PRODUCT YOU WANT, AT A PRICE AND QUALITY YOU EXPECT, DELIVERED EXACTLY WHEN YOU NEED IT.

#4 APPROVAL

We work directly with the utility on product approval.

#5 MANUFACTURE

We manufacture to agreed and approved specification.

#6 INVENTORY

Inventory maintained with buffer for additional requirements.

#7 SHIPPING

We offer next day shipping to locations across North America.

FOR ANY INQUIRIES CALL TODAY ON

888 685 9478

Slingco America, Inc.

3100 Jonquil Drive SE, Smyrna, Georgia, 30080, USA

TOLL FREE: 888 685 9478 · Fax: 888 728 4047

sales@slingcoamerica.com



[slingcoamerica.com](https://www.slingcoamerica.com)

Slingco makes no warranty, express or implied, with respect to this product nor with respect to its specifications. In no event shall Slingco be liable for any direct, indirect, punitive, incidental, special consequential damages to property or life, whatsoever, arising out of or connected with the use or misuse of this product. This product is intended for use by qualified professionals having adequate knowledge of its proper use. October 2024 - v1.2