



CABLE INSTALLATION
AND SUPPORT
FOR RIGGING,
UNDERGROUND AND
DIRECTIONAL DRILLING

A GLOBAL BUSINESS BUILT ON QUALITY, INNOVATION, SERVICE ...AND REAL FAMILY TIES



Business partners and brothers Nick and Matt Dykins' involvement in the business remains hands-on to this day. Matt, President of Slingco America, is resident in the US, while Nick leads the UK operation as CEO of Slingco Limited.

Together they manage the companies' day-to-day business, new product development, and expanding global interests, most recently adding manufacturing facilities in India and opening sales offices in Moscow.



We've been living and breathing cable grips and wire rope for as long as we can remember. You can blame our Dad for that!

He founded Slingco more than 40 years ago. Since then, we've grown up and so has the company, evolving into an expert design and manufacturing operation, producing high quality cable grips, wire rope assemblies and more - products that are renowned for high performance in quality-critical applications.

Slingco is based in Atlanta, Georgia, but you'll find our products around the world, making heavy-duty cable installation and support a whole lot easier for people working in industries as varied as oil and gas, marine and offshore, public utilities, civil engineering, aerospace, transport, the military, performing arts, vehicle building, construction and more.

You can't make mistakes when you're dealing with products like ours. Too much depends on them. That's why we're obsessive about quality and innovation in design and manufacturing, and why nothing leaves our hands that isn't 100% dependable.

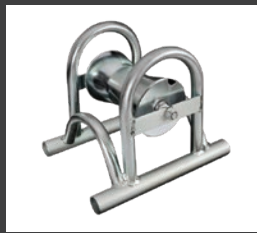
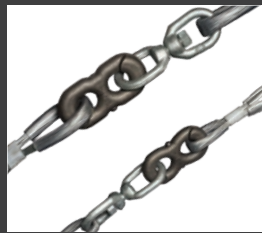
Because we understand exactly what your operation needs, we also know cost is a factor. We keep our prices realistic and hold a vast range of stock for fast - even same day - delivery.

We're brothers, partners and the driving force behind Slingco, but we're only a small part of the whole picture. We've got a fantastic team of skilled people who share our obsession with quality and great service. We're proud of every one of them.

Together, we're going to carry on developing outstanding products. We're going to carry on getting them out to you in record time. And we're going to carry on being the sort of company it's a pleasure to deal with.

MATT DYKINS
PRESIDENT, SLINGCO AMERICA

NICK DYKINS
CEO, SLINGCO LIMITED



QUALITY, SAFETY AND TESTING

Cables and their associated supports are by definition, safety-critical components and we recognize that this places us in a real position of responsibility. Hence all our products are designed, manufactured and tested to exacting standards to ensure safe and dependable operation under even the most challenging conditions. We operate a quality management system and are accredited to ISO 9001.

IN-HOUSE DESIGN

An integral part of our manufacturing facility is our dedicated in-house design engineering team. As well as being focused on our own design and development projects,

our engineering team's skills - employing cutting-edge 3D modeling and finite element analysis software - are available to our customers.

From initial product design and manufacture to technical support and customer service, the strength of our business lies in the skills and commitment of our people. They're here to serve you and we're confident that this shows in everything we do.

If you've a specific requirement you think we could help with, or would just like to make contact for a general discussion, please call us on **888 685 9478** or email sales@slingcoamerica.com.

UNDERGROUND & DIRECTIONAL DRILLING PULLING GRIPS

R Type - Rotating Multi-Weave Cable Grip	4
RT Type - Rotating Eye Double Weave Cable Grip	4
Reinforced Eye Underground Grips	5

UNDERGROUND, DIRECTIONAL DRILLING & GENERAL PULLING GRIPS

SE Type - Single Eye Cable Grip	6
OS Type - Offset Eye Cable Grip	6

SWIVELS

Pulling Swivel - Bright Zinc Plated Steel	7
Bullet Nose Swivel - Galvanized	7
Tri & Quad Pulling Sling	7

SPLICING CABLE GRIPS

Splicing Grip - Rotating Swivel Link	8
Splicing Grip - Rotating Barrel	8
Figure Of 8 Connector	8
Open Ended Cable Grip	9

CONNECTORS

90°, Rope To Rope, Rope To Swivel	9
-----------------------------------	---

LACE UP AND MARINE CABLE GRIPS

L Type - Lace Up Cable Grip	10
Marine Cable Grips	10

HOSE RESTRAINT GRIPS

Heavy Duty Hose Restraint Grips	11
Specialty Hose Restraint Grips	11

SUPPORT GRIPS

Single Eye Closed Mesh Cable Support Grip	12
Single Eye Split Mesh Lace Closing Cable Support Grip	12
Single Eye Split Mesh Rod Closing Cable Support Grip	12

NON-METALLIC CABLE GRIPS

NS - Non-Metallic (Aramid) Single Eye Cable Grip	13
ND - Non-Metallic (Aramid) Double Eye Cable Grip	13
NO - Non-Metallic (Aramid) Offset Eye Cable Grip	13

ACCESSORIES

Banding Tool	14
Tri Socks	14
Cable Laying Roller	14

IMPORTANT TECHNICAL INFORMATION

Single And Double Eye Cable Grip Instructions	15
---	----

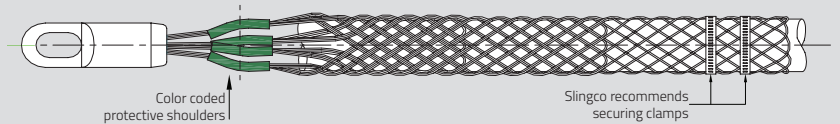
UNDERGROUND & DIRECTIONAL DRILLING PULLING GRIPS

R TYPE - ROTATING MULTI-WEAVE CABLE GRIP

The rotating eye cable grip has a triple weave construction and is color coded for ease of identification. The steel forged revolving head is ideal for connecting to Slingco swivels. Warning: The Slingco rotating eye does not revolve under load and does not replace the use of a line swivel. Please see page 17 for swivel and grip match-up and safety and technical information. Made of Galvanized Steel.



Slingco Part No	Color Code	Range		Lattice Length		Approx. Break Load	
		in	mm	in	mm	lb	kg
ZCS2177	Dark Green	0.25 - 0.50	6-12	31	787	7,000	3,170
ZCS2178	Brown	0.50 - 0.75	12-19	45	1,143	10,500	4,760
ZCS2179	Light Blue	0.75 - 1.00	19-25	43	1,092	14,100	6,395
ZCS2180	Gold	1.00 - 1.25	25-32	65	1,651	25,000	11,340
ZCS2181	Black	1.25 - 1.50	32-38	59	1,499	31,000	14,065
ZCS2182	Red	1.50 - 1.75	38-44	82	2,083	31,000	14,065
ZCS2183	Dark blue	1.75 - 2.25	44-57	82	2,083	43,000	19,510
ZCS2779	Yellow	2.00 - 2.50	50-63	72	1,829	43,000	19,510
ZCS2780	Orange	2.50 - 3.00	63-76	72	1,829	43,000	19,510
ZCS2781	Aluminum	3.00 - 3.50	76-89	74	1,880	43,000	19,510
ZCS2782	Light Green	3.50 - 4.00	89-102	76	1,930	43,000	19,510



RT TYPE - ROTATING EYE DOUBLE WEAVE CABLE GRIP



Slingco Part No	Range		Lattice Length		Approx. Break Load	
	in	mm	in	mm	lb	kg
SHORT LENGTH - GALVANIZED STEEL						
ZCS2734	0.50 - 0.62	13-16	11	280	5,600	2,540
ZCS2735	0.62 - 0.75	16-19	11	280	6,800	3,085
ZCS2736	0.75 - 1.00	19-25	20	508	6,800	3,085
ZCS2738	1.00 - 1.50	25-38	21	533	12,800	5,805
ZCS2739	1.50 - 2.00	38-50	25	635	16,400	7,440
ZCS2740	2.00 - 2.50	50-63	26	660	27,200	12,340
ZCS2741	2.50 - 3.00	63-76	28	711	33,000	14,970
ZCS2742	3.00 - 3.50	76-89	30	762	41,000	18,600
ZCS2743	3.50 - 4.00	89-102	32	813	43,000	19,510
ZCS2744	4.00 - 4.50	102-115	33	838	43,000	19,510
STANDARD - LONGER LENGTH - GALVANIZED STEEL						
ZCS2745	0.50 - 0.62	13-16	16	406	5,600	2,540
ZCS2746	0.62 - 0.75	16-19	16	406	6,800	3,085
ZCS2747	0.75 - 1.00	19-25	32	812	9,600	4,355
ZCS2748	1.00 - 1.50	25-38	33	838	16,400	5,805
ZCS2749	1.50 - 2.00	38-50	34	863	16,400	7,440
ZCS2750	2.00 - 2.50	50-63	36	914	27,300	12,340
ZCS2751	2.50 - 3.00	63-76	38	965	33,000	14,970
ZCS2752	3.00 - 3.50	76-89	39	990	41,000	18,600
ZCS2753	3.50 - 4.00	89-102	41	1,041	43,000	19,510
ZCS2754	4.00 - 4.50	102-115	42	1,066	43,000	19,510
ZCS2755	4.50 - 5.00	115-127	58	1,473	43,000	19,510
ZCS2756	5.00 - 6.00	127-153	60	1,524	43,000	19,510
ZCS2757	6.00 - 7.00	153-178	66	1,676	43,000	19,510

Double weave construction for medium to heavy pulling applications in underground installations. Additionally its steel forged revolving head is ideal for connecting to Slingco swivels. Warning: The Slingco RT Type Rotating Eye Cable Grip does not revolve under load. The rotating eye does not replace the need for a swivel. Please see page 17 for swivel and grip match-up and safety and technical information.

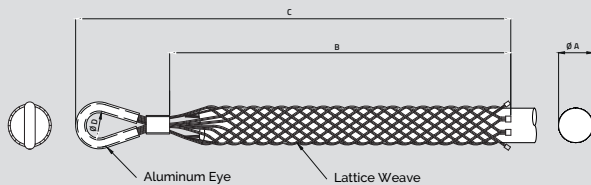
UNDERGROUND & DIRECTIONAL DRILLING PULLING GRIPS

REINFORCED EYE UNDERGROUND GRIPS



This line of grips are specially designed for underground applications. The eye is enclosed in an aluminum tube which provides added support when running within conduit and trenches. Plus these underground pulling grips are made from coated airline wire for added strength and flexibility.

Now with expanded range capacity use one grip for a wider range of diameters. Plus the expanded range allows for easier installation on conductor or any cylindrical object. As with all pulling applications Slingco strongly recommends banding. See grip installation instructions on page 15.



Slingco part no.	Ø A nominal in (mm)	Range	Lattice Weave	B in (mm)	C in (mm)	Ø D Eye in (mm)	Approx. Break Load
SINGLE EYE SINGLE / DOUBLE WEAVE PVC COATED GALVANIZED - 0.25 - 0.50" (6 - 13mm)							
ZCS6355	0.37 (9.5)	0.25-0.5 (6-13)	Single	18 (457)	21.75 (552)	0.70 (18)	1500 (680)
ZCS6356	0.37 (9.5)	0.25-0.5 (6-13)	Single	24 (610)	27.75 (705)	0.70 (18)	1500 (680)
ZCS6357	0.37 (9.5mm)	0.25-0.5 (6-13)	Double (uncoated)	18 (457)	21.75 (552)	0.70 (18)	3500 (1588)
ZCS6358	0.37 (9.5)	0.25-0.5 (6-13)	Double (uncoated)	24 (610)	27.75 (705)	0.70 (18)	3500 (1588)
SINGLE EYE SINGLE / DOUBLE / TRIPLE WEAVE PVC COATED GALVANIZED - 0.50 - 0.75" (13 - 19mm)							
ZCS6359	0.63 (16)	0.50-0.75 (13-19)	Single	18 (457)	21.75 (552)	0.70 (18)	1500 (680)
ZCS6360	0.63 (16)	0.50-0.75 (13-19)	Single	24 (610)	27.75 (705)	0.70 (18)	1500 (680)
ZCS6361	0.63 (16)	0.50-0.75 (13-19)	Double (uncoated)	18 (457)	21.75 (552)	0.70 (18)	4000 (1814)
ZCS6362	0.63 (16)	0.50-0.75 (13-19)	Double (uncoated)	24 (610)	27.75 (705)	0.70 (18)	4000 (1814)
ZCS6363	0.63 (16)	0.50-0.75 (13-19)	Triple	12 (305)	17 (432)	0.87 (22)	5200 (2359)
ZCS6364	0.63 (16)	0.50-0.75 (13-19)	Triple	18 (457)	23 (584)	0.87 (22)	5200 (2359)
ZCS6365	0.63 (16)	0.50-0.75 (13-19)	Triple	24 (610)	29 (737)	0.87 (22)	5200 (2359)
ZCS6366	0.63 (16)	0.50-0.75 (13-19)	Triple	36 (914)	41 (1041)	0.87 (22)	5200 (2359)
SINGLE EYE SINGLE / DOUBLE / TRIPLE WEAVE PVC COATED GALVANIZED - 0.75 - 1.25" (19-32mm)							
ZCS6367	1.0 (25)	0.75-1.25 (19-32)	Single	18 (457)	23 (584)	0.87 (22)	3000 (1361)
ZCS6368	1.0 (25)	0.75-1.25 (19-32)	Single	24 (610)	29 (737)	0.87 (22)	3000 (1361)
ZCS6369	1.0 (25)	0.75-1.25 (19-32)	Double	18 (457)	23 (584)	0.87 (22)	6000 (2722)
ZCS6370	1.0 (25)	0.75-1.25 (19-32)	Double	24 (610)	29 (737)	0.87 (22)	6000 (2722)
ZCS6371	1.0 (25)	0.75-1.25 (19-32)	Triple	18 (457)	23 (584)	0.87 (22)	7500 (3402)
ZCS6372	1.0 (25)	0.75-1.25 (19-32)	Triple	24 (610)	29 (737)	0.87 (22)	10000 (4537)
SINGLE EYE TRIPLE WEAVE PVC COATED GALVANIZED - 1.25 - 4.88" (32 - 124mm)							
ZCS6373	1.61 (41)	1.25-2.0 (32-51)	Triple	26 (660)	31 (787)	1.42 (36)	7500 (3402)
ZCS6374	1.61 (41)	1.25-2.0 (32-51)	Triple	32 (813)	37 (940)	1.42 (36)	10500 (4764)
ZCS6375	2.37 (60)	2.0-2.75 (51-70)	Triple	32 (813)	37 (940)	1.91 (48.5)	10500 (4764)
ZCS6376	2.37 (60)	2.0-2.75 (51-70)	Triple	38 (965)	44.3 (1125)	1.91 (48.5)	13500 (6125)
ZCS6377	3.12 (70)	2.75-3.5 (70-89)	Triple	38 (965)	44.3 (1125)	1.91 (48.5)	13500 (6125)
ZCS6378	3.12 (70)	2.75-3.5 (70-89)	Triple	46 (1168)	52.3 (1328)	1.91 (48.5)	16500 (7486)
ZCS6379	3.87 (99)	3.5-4.25 (89-108)	Triple	46 (1168)	52.3 (1328)	1.91 (48.5)	16500 (7486)
ZCS6380	3.87 (99)	3.5-4.25 (89-108)	Triple	52 (1321)	58.3 (1481)	1.91 (48.5)	19500 (8847)
ZCS6381	4.56 (116)	4.25-4.87 (108-124)	Triple	52 (1321)	58.3 (1481)	1.91 (48.5)	18000 (8167)
ZCS6382	4.56 (116)	4.25-4.87 (108-124)	Triple	58 (1473)	64.3 (1633)	1.91 (48.5)	19500 (8847)

Lengths B and C when on nominal mandrel ØA +/- 5%

UNDERGROUND, DIRECTIONAL DRILLING & GENERAL PULLING GRIPS

SE TYPE - SINGLE EYE CABLE GRIP



Ideal for pulling light to medium loads. The typical application is a 'standard pull' of single or group of cables or any cylindrical option such as a pipe or tubing. Load tensions should be moderate. Perfect for underground electrical or Industrial and Commercial site wiring projects.

Slingco Part No	Range		Lattice Weave	Lattice Length		Overall Length		Approx. Break Load	
	in	mm		in	mm	in	mm	lb	kg
SINGLE EYE STANDARD GRIP - GALVANIZED									
ZCS0320	0.25 - 0.50	10-13	Single	9	230	12	305	1,680	760
ZCS0321	0.50 - 0.75	13-19	Single	14	355	17	430	2,240	1,015
ZCS0322	0.75 - 1.00	19-25	Single	16	405	20	510	5,600	2,540
ZCS0323	1.00 - 1.50	25-38	Single	18	455	24	610	7,840	3,555
ZCS0324	1.50 - 2.00	38-50	Double	21	535	29	735	11,200	5,080
ZCS0325	2.00 - 2.50	50-63	Double	24	610	34	865	11,200	5,080
ZCS0326	2.50 - 3.50	63-89	Double	27	685	39	990	13,440	6,095
ZCS0327	3.50 - 4.50	89-115	Double	27	685	39	990	15,680	7,110
ZCS0821	4.50 - 5.50	115-140	Double	27	685	39	990	15,680	7,110
SINGLE EYE STANDARD GRIP - 316 STAINLESS STEEL									
ZCS1380	0.25 - 0.50	10-13	Single	9	230	12	305	1,344	610
ZCS1523	0.50 - 0.75	13-19	Single	14	355	17	430	1,792	810
ZCS1373	0.75 - 1.00	19-25	Single	16	405	20	510	4,480	2,030
ZCS1952	1.00 - 1.50	25-38	Single	18	455	24	610	6,272	2,845
ZCS1381	1.50 - 2.00	38-50	Double	21	535	29	735	8,960	4,065
ZCS1977	2.00 - 2.50	50-63	Double	24	610	34	865	8,960	4,065
ZCS1979	2.50 - 3.50	63-89	Double	27	685	39	990	10,752	4,875
ZCS1980	3.50 - 4.50	89-115	Double	27	685	39	990	12,544	5,690
ZCS1981	4.50 - 5.50	115-140	Double	27	685	39	990	12,544	5,690

OS TYPE - OFFSET EYE CABLE GRIP



Similar to the SE Type single eye cable grip, but for when offset positioning is required. Excellent for pulling slack out of lines that have been pulled or for removing underground cables when the end of the cable is accessible.

Slingco Part No	Range		Lattice Weave	Lattice Length		Overall Length		Approx. Break Load	
	in	mm		in	mm	in	mm	lb	kg
OFFSET EYE STANDARD GRIP - GALVANIZED									
ZCS1860	0.25 - 0.50	6-13	Single	9	230	12	305	1,680	760
ZCS1861	0.50 - 0.75	13-19	Single	14	355	17	430	2,240	1,015
ZCS1862	0.75 - 1.00	19-25	Single	16	405	20	510	5,600	2,540
ZCS1863	1.00 - 1.50	25-38	Single	18	455	24	610	7,840	3,555
ZCS1864	1.50 - 2.00	38-50	Double	21	535	29	735	11,200	5,080
ZCS1865	2.00 - 2.50	50-63	Double	24	610	34	865	11,200	5,080
ZCS1866	2.50 - 3.50	63-89	Double	27	685	39	990	13,440	6,095
ZCS1867	3.50 - 4.50	89-115	Double	27	685	39	990	15,680	7,110
ZCS1974	4.50 - 5.50	115-140	Double	27	685	39	990	15,680	7,110
OFFSET EYE STANDARD GRIP - 316 STAINLESS STEEL									
ZCS1986	0.25 - 0.50	6-13	Single	9	230	12	305	1,344	610
ZCS1987	0.50 - 0.75	13-19	Single	14	355	17	430	1,792	810
ZCS1988	0.75 - 1.00	19-25	Single	16	405	20	510	4,480	2,030
ZCS1989	1.00 - 1.50	25-38	Single	18	455	24	610	6,272	2,845
ZCS1990	1.50 - 2.00	38-50	Double	21	535	29	735	8,960	4,065
ZCS1991	2.00 - 2.50	50-63	Double	24	610	34	865	8,960	4,065
ZCS1992	2.50 - 3.50	63-89	Double	27	685	39	990	10,752	4,875
ZCS1993	3.50 - 4.50	89-115	Double	27	685	39	990	12,544	5,690
ZCS1994	4.50 - 5.50	115-140	Double	27	685	39	990	12,544	5,690
ZCS3994	5.50 - 7.00	140-180	Double	24	610	39	990	4,500	2,009
ZCS4069	8.0 - 9.0	203-229	Double	59	1,500	74	1,880	20,000	8,928

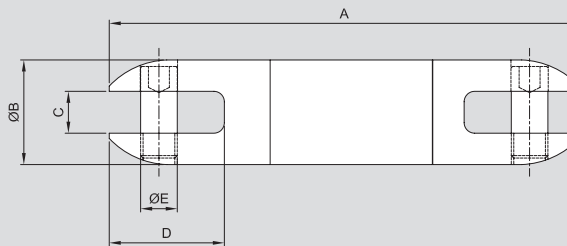
PULLING SWIVELS FOR OVERHEAD LINE AND UNDERGROUND APPLICATIONS

Slingco Line Swivels are designed to the highest specifications for underground and overhead pulling applications. All swivels are stringently quality tested and inspected to ensure optimum reliability and performance.



Slingco part no.	Safe working load lb (kg)		A in (mm)	Ø B in (mm)	C in (mm)	D in (mm)	Ø E in (mm)
	Underground	Overhead					
BRIGHT ZINC PLATED STEEL - ROUNDED EDGE SWIVEL							
ZSW2091	2,250 (1,015)	1,350 (610)	3 3/8 (86)	7/8 (22)	3/8 (10)	7/8 (22)	5/16 (8)
ZSW2092	3,500 (1,590)	2,100 (955)	4 (99)	1 (25)	7/16 (11)	11/16 (26)	3/8 (10)
ZSW2093	5,000 (2,240)	3,000 (1,345)	4 15/16 (126)	1 1/4 (32)	9/16 (14)	1 1/4 (32)	3/8 (10)
ZSW2094	7,000 (3,170)	4,200 (1,900)	5 3/16 (132)	1 3/8 (35)	9/16 (14)	1 13/32 (36)	1/2 (12.5)
ZSW2096	10,000 (4,530)	6,000 (2,700)	6 3/16 (157)	1 5/8 (41)	45/64 (18)	1 3/4 (45)	13/20 (16.5)
ZSW2097	15,000 (6,730)	9,000 (4,030)	7 5/16 (186)	2 3/32 (53)	25/32 (20)	2 1/8 (54)	23/32 (18)
BULLET NOSE SWIVEL - GALVANIZED							
ZSW2649	4,000 (1,815)	2,400 (1,085)	4 3/4 (121)	1 1/4 (32)	19/32 (15)	1 3/16 (30)	3/8 (10)
ZSW2929	8,000 (3,630)	4,800 (2,175)	5 3/8 (136)	1 1/2 (38)	5/8 (16)	1 3/8 (35)	7/16 (11)
ZSW6122	10,000 (4,530)	6,000 (2,700)	7 (178)	1 7/8 (48)	3/4 (19)	1 3/4 (44)	5/8 (16)
ZSW6123	16,000 (7,142)	9,600 (4,355)	10 5/32 (258)	2 7/16 (62)	1 (25)	2 11/16 (68)	7/8 (22)
ZSW2857	30,000 (13,610)	18,000 (8,165)	11 1/8 (283)	2 1/2 (63)	1 (25)	2 3/4 (70)	7/8 (22)

3:1 factor of safety used, based on the ultimate load for underground use
5:1 factor of safety used, based on the ultimate load for overhead use



Swivel or Connector Model	ZSW2091	ZSW2092	ZSW2093	ZSW2094	ZSW2096 ZSW6122	ZSW2097	ZSW2929	ZSW2649	ZSW2857	ZSW6123	ZSW6554	ZSW6555	ZSW6556	ZSW6557 ZSW6558 ZSW6559 ZSW6560
Replacement Pin (HEX)	SWI2858	SWI2810	SWI2340	SWI2341	SWI2343	SWI2344	SWI2801	SWI2648	SWI2748	SWI5184	SWI2859	SWI2339	SWI5309	SWI5310

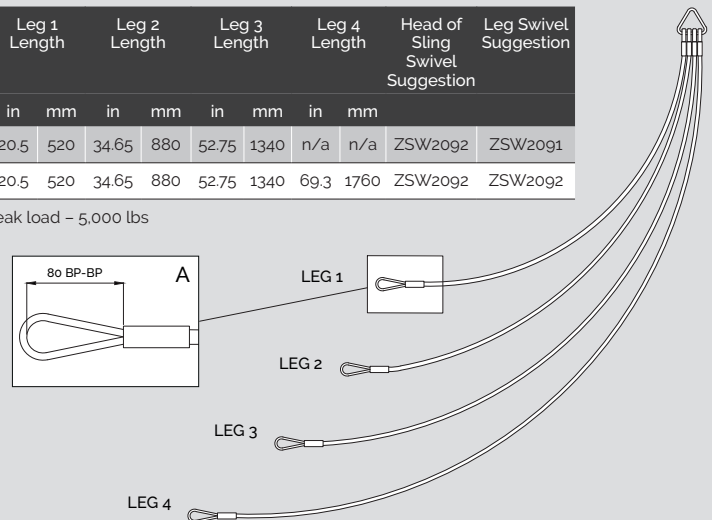
TRI & QUAD PULLING SLING

This staggered pulling sling is designed to allow the pulling of multiple conductors at the same time while minimizing the overall diameter of your pulling bundle. These pulling slings come in a three leg or four leg versions. One should use a swivel for each leg and at the head of the sling to release torsion and allow the conductors to rotate freely. The suggested swivels are listed with each model.



Slingco part no.	Leg 1 Length		Leg 2 Length		Leg 3 Length		Leg 4 Length		Head of Sling Sling Swivel Suggestion	Leg Swivel Suggestion
	in	mm	in	mm	in	mm	in	mm		
ZSH2264	20.5	520	34.65	880	52.75	1340	n/a	n/a	ZSW2092	ZSW2091
ZSH2265	20.5	520	34.65	880	52.75	1340	69.3	1760	ZSW2092	ZSW2092

Minimum break load - 5,000 lbs

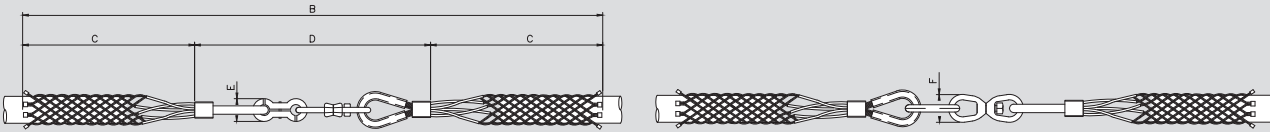


SPLICING CABLE GRIPS

SPLICING GRIP - ROTATING SWIVEL LINK

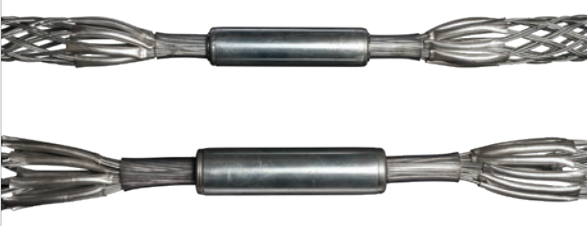


Slingco Rotating Swivel Link Grips are perfect for stringing replacement wire and cable on equipment and in drilling or rigging systems. Not recommended for use in overhead stringing applications. Use the existing cable as a pull wire to string the replacement cable. These grips are available with differently sized grips for each side. Call for assistance in selecting the proper grip. Link opens for easy installation and adjustment. Made of Galvanized Steel.

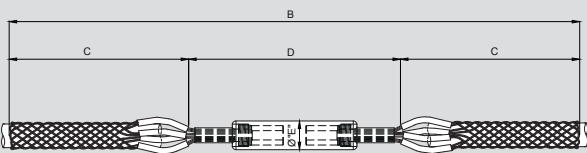


Slingco Part No	Range		B Length		C Length		D Length		E Length		F Length		Approx. Break Load	
	in	mm	in	mm	in	mm	in	mm	in	mm	in	mm	lb	kg
ZCS3493	0.25 - 0.50	6-13	100.0	2,540	44.3	1,127	11.3	288	0.87	22	1.25	32	2,400	1,089
ZCS3494	0.50 - 1.00	13-25	103.8	2,641	46.0	1,170	11.8	301	1.38	35	1.25	32	3,526	1,599
ZCS3495	1.00 - 1.50	25-38	103.0	2,614	44.9	1,140	13.1	334	1.61	41	1.61	41	5,070	2,300
ZCS3496	1.50 - 2.00	38-51	101.0	2,573	43.7	1,110	13.9	353	1.61	41	2.0	51	8,000	3,629
ZCS3497	2.00 - 2.75	51-70	100.0	2,540	42.9	1,090	13.9	353	1.61	41	2.0	51	10,000	4,530
ZCS3498	2.75 - 3.50	70-90	118.0	3,013	52.3	1,330	13.9	353	1.61	41	2.0	51	10,000	4,530
ZCS3499	3.50 - 4.25	89-108	117.0	2,973	51.6	1,310	13.9	353	1.61	41	2.0	51	10,000	4,530

SPLICING GRIP - ROTATING BARREL



Slingco Rotating Barrel Swivel grips have a high capacity swivel that travels smoothly when being strung in straight line pulling.

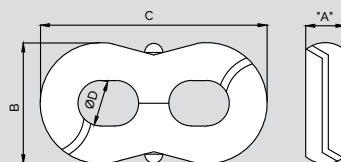


Slingco Part No	Range		B Length		C Length		D Length		Ø E		Approx. Break Load	
	in	mm	in	mm	in	mm	in	mm	in	mm	lb	kg
ZCS3505	0.25 - 0.50	6-13	66.1	1,680	29.7	755	6.7	170	0.9	23	4,400	1,964
ZCS3506	0.50 - 1.00	13-25	87.8	2,230	40.0	1,015	7.9	200	1.0	25.4	7,400	3,304
ZCS3507	1.00 - 1.50	25-38	79.9	2,030	35.2	895	9.5	240	1.4	36	10,000	4,530
ZCS3508	1.50 - 2.00	38-51	72.0	1,830	31.3	795	9.5	240	1.4	36	12,000	5,357
ZCS3509	2.00 - 2.75	51-70	85.8	2,180	37.0	940	11.8	300	1.6	41	16,000	7,142
ZCS3510	2.75 - 3.50	70-90	107.5	2,730	47.0	1,195	13.3	340	1.9	48.5	20,000	8,928
ZCS3511	3.50 - 4.25	89-108	104.3	2,650	44.5	1,130	15.3	390	1.9	48.5	24,000	10,714

FIGURE OF 8 'SWING LINK' CONNECTOR



Slingco Part No	A		B		C		Ø D		Approx. Break Load	
	in	mm	in	mm	in	mm	in	mm	lb	kg
SWI4279	0.25	6	0.87	22	1.87	48	0.37	10	3000	1361
SWI4280	0.37	10	1.37	35	2.50	64	0.50	13	4500	2041
SWI4281	0.50	13	1.62	41	3.25	83	0.62	16	10000	4537
SWI4282	0.75	19	2.43	62	5.00	127	0.93	24	18000	8167
SWI4283	1.00	25	3.06	78	6.5	165	1.25	32	45000	20417



SPLICING CABLE GRIPS / CONNECTORS

OPEN ENDED CABLE GRIP

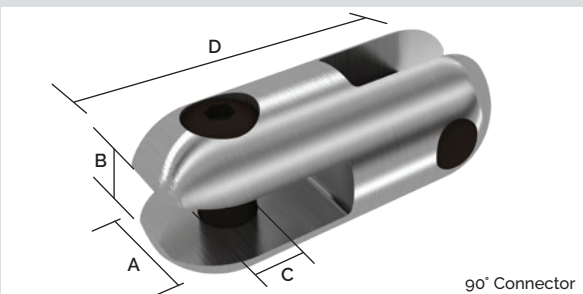


Ideal for joining two cables to form a continuous loop. Typical application: replacement of lift cables, where the old cable would be attached to the new one, and the cable then fed around with ease. Also used to temporarily splice cable and conductor where torsion forces are NOT an issue. Torsion should be released prior to splicing. Where torsion is present a swivel and two grips should be used.

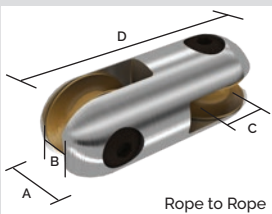
Slingco Part No	Range		Lattice Weave	Lattice Length		Approx. Break Load	
	in	mm		in	mm	lb	kg
OPEN ENDED STANDARD GRIP - GALVANIZED							
ZCS0313	0.25 - 0.50	10-13	Single	15	380	1,680	760
ZCS6420	0.25 - 0.50	10-13	Double	22	559	3,500	1,588
ZCS0314	0.50 - 0.75	13-19	Single	24	610	2,240	1,015
ZCS6421	0.50 - 0.75	13-19	Double	30	762	4,500	2,040
ZCS6425	0.50 - 0.75	13-19	Multi	70	1,779	7,500	3,400
ZCS0315	0.75 - 1.00	19-25	Single	28	710	5,600	2,540
ZCS6422	0.75 - 1.00	19-25	Double	30	762	8,000	3,630
ZCS6426	0.75 - 1.00	19-25	Multi	80	2,032	11,800	5,352
ZCS0316	1.00 - 1.50	25-38	Single	32	815	7,840	3,555
ZCS6423	1.00 - 1.50	25-38	Double	36	915	10,000	4,537
ZCS6427	1.00 - 1.50	25-38	Multi	90	2,285	20,000	9,070
ZCS0317	1.50 - 2.00	38-50	Double	36	915	11,200	5,080
ZCS0318	2.00 - 2.50	50-63	Double	42	1,065	11,200	5,080
ZCS1158	2.50 - 3.50	63-89	Double	48	1,220	13,440	6,095
ZCS1159	3.50 - 4.50	89-115	Double	54	1,370	15,680	7,110
ZCS6424	4.25 - 4.88	108-124	Triple	55	1,400	19,500	8,847
ZCS1975	4.50 - 5.50	115-140	Double	54	1,370	15,680	7,110
OPEN ENDED STANDARD GRIP - 316 STAINLESS STEEL							
ZCS1995	0.25 - 0.50	10-13	Single	15	380	1,344	610
ZCS1996	0.50 - 0.75	13-19	Single	24	610	1,792	810
ZCS1997	0.75 - 1.00	19-25	Single	28	710	4,480	2,030
ZCS1998	1.00 - 1.50	25-38	Single	32	815	6,272	2,845
ZCS1999	1.50 - 2.00	38-50	Double	36	915	8,960	4,065
ZCS2000	2.00 - 2.50	50-63	Double	42	1,065	8,960	4,065
ZCS2001	2.50 - 3.50	63-89	Double	48	1,220	10,752	4,875
ZCS2002	3.50 - 4.50	89-115	Double	54	1,370	12,544	5,690
ZCS2003	4.50 - 5.50	115-140	Double	54	1,370	12,544	5,690

CONNECTORS: 90°, ROPE TO ROPE, ROPE TO SWIVEL

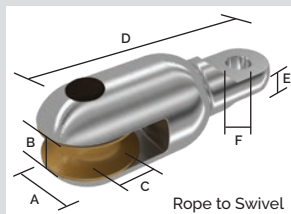
Use to connect rope, swivels and other objects. With high strength pins and smooth rollers you can safely connect rope without fear of fraying or damage. Use the convenient 90° connectors to link wire and other non-rope items. Connectors have high strength hex pins. The Rope to Rope connector has two rollers to protect rope from becoming frayed.



90° Connector



Rope to Rope



Rope to Swivel

90° CONNECTOR									
Slingco part no.	Safe working load lb (kg)	A in (mm)	B in (mm)	C in (mm)	D in (mm)	Weight lb (kg)			
ZSW6554	2,500 (1,134)	7/8 (22)	3/8 (9.6)	5/16 (8)	2 1/8 (54.0)	0.17 (0.08)			
ZSW6555	5,000 (2,240)	1 1/4 (31.8)	17/32 (13.5)	13/32 (10)	2 7/8 (73.0)	0.46 (0.21)			
ZSW6556	9,000 (4,030)	1 1/2 (38.1)	19/32 (15)	1/2 (12.5)	3 3/8 (86)	0.73 (0.33)			
ZSW6557	15,000 (6,800)	2 (50.8)	25/32 (20)	11/16 (18.0)	4 9/16 (116)	2.00 (0.91)			
ROPE TO ROPE CONNECTOR									
Slingco part no.	Safe working load lb (kg)	Max rope dia. in (mm)	A in (mm)	B in (mm)	C in (mm)	D in (mm)	Weight lb (kg)		
ZSW6558	15,000 (6,800)	7/8 (22.2)	2 (50.8)	15/16 (24)	11/16 (18)	5 1/2 (140)	2.70 (1.23)		
ROPE TO SWIVEL CONNECTOR									
Slingco part no.	Safe working load lb (kg)	Max rope dia. in (mm)	A in (mm)	B in (mm)	C in (mm)	D in (mm)	E in (mm)	F in (mm)	Weight lb (kg)
ZSW6559	7,000 (3,170)	7/8 (22.2)	2 (50.8)	15/32 (24)	11/32 (18)	5 5/16 (135)	1/2 (12.7)	17/32 (13.5)	2.70 (1.23)
ZSW6560	15,000 (6,800)	7/8 (22.2)	2 (50.8)	15/32 (24)	11/32 (18)	5 3/8 (137)	21/32 (16.7)	3/4 (18)	2.00 (0.91)

Safe working load based upon 3:1 factor of safety.

LACE UP AND MARINE CABLE GRIPS

L TYPE - LACE UP CABLE GRIP



Ideal for pulling light to medium loads; the L-type is fitted to the cable being pulled by stitching it together, like a football. Mainly used where a 'typical' cable grip can't be fitted over a connector at the end of a cable. For use in pulling when the end is not accessible. The L Type is wrapped around the cable, then closed with the wire lace provided.

Slingco Part No	Range		Lattice Weave	Lattice Length		Overall Length		Approx. Break Load	
	in	mm		in	mm	in	mm	lb	kg
LACE UP STANDARD GRIP - GALVANIZED									
ZCS1157	0.25 - 0.50	10-13	Single	9	230	12	305	1,680	760
ZCS0872	0.50 - 0.75	13-19	Single	14	355	17	430	2,240	1,015
ZCS0871	0.75 - 1.00	19-25	Single	16	405	20	510	5,600	2,540
ZCS0328	1.00 - 1.50	25-38	Single	18	455	24	610	7,840	3,555
ZCS0329	1.50 - 2.00	38-50	Double	21	535	29	735	11,200	5,080
ZCS0330	2.00 - 2.50	50-63	Double	24	610	34	865	11,200	5,080
ZCS0331	2.50 - 3.50	63-89	Double	27	685	39	990	13,440	6,095
ZCS0853	3.50 - 4.50	89-115	Double	27	685	39	990	15,680	7,110
ZCS1109	4.50 - 5.50	115-140	Double	27	685	39	990	15,680	7,110
ZCS4463	4.72 - 5.90	120-150	Triple	59	1,500	102	2,600	32,928	14,700
ZCS3270	7.90 - 8.70	200-220	Triple	78	2,000	102	2,600	71,680	32,000
LACE UP STANDARD GRIP - 316 STAINLESS STEEL									
ZCS1983	0.25 - 0.50	10-13	Single	9	230	12	305	1,344	610
ZCS1796	0.50 - 0.75	13-19	Single	14	355	17	430	1,792	810
ZCS1789	0.75 - 1.00	19-25	Single	16	405	20	510	4,480	2,030
ZCS1797	1.00 - 1.50	25-38	Single	18	455	24	610	6,272	2,845
ZCS1984	1.50 - 2.00	38-50	Double	21	535	29	735	8,960	4,065
ZCS2466	2.00 - 2.50	50-63	Double	24	610	34	865	8,960	4,065
ZCS0816	2.50 - 3.50	63-89	Double	27	685	39	990	10,752	4,875
ZCS5094	2.75 - 3.44	69-87	Multiple	55	1,390	81	2,063	40,000	17,857
ZCS1356	3.50 - 4.50	89-115	Double	27	685	39	990	12,544	5,690
ZCS2832	3.50 - 4.50	89-115	Triple	27	685	39	990	14,012	6,300
ZCS1355	4.50 - 5.50	115-140	Double	27	685	39	990	12,544	5,690
ZCS2833	4.50 - 5.50	115-140	Triple	27	685	39	990	16,128	7,315

MARINE CABLE GRIPS – LARGE DIAMETER CABLE GRIPS



These specialty cable grips are extremely heavy duty and suitable for large underwater pulls, plus other applications in the oil and gas industries. Galvanized steel construction for heavy duty large diameter pulls. Applications include underwater cable installation. Available in single eye, double eye lace closing and double eye. Sizes range from 4 inches to over 20 inches. Manufactured to order.

Slingco Part No	Range		Lattice length		Approx. Break Load	
	in	mm	in	mm	lb	kg
DOUBLE EYE						
ZCS3535	4 - 5	102-127	94	2,360	123,000	55,800
ZCS3536	5 - 6	127-152	94	2,360	123,000	55,800
ZCS3537	6 - 8	152-203	94	2,360	127,500	57,850
ZCS3538	8 - 10	203-255	94	2,360	156,500	71,000
ZCS3539	10 - 12	255-305	94	2,360	156,500	71,000
ZCS3540	12 - 14	305-355	94	2,360	156,500*	71,000
ZCS3541	14 - 16	355-406	118.11	2,950	156,000*	71,000+
ZCS3542	16 - 18	406-457	131.79	3,290	156,500*	71,000+
ZCS3543	18 - 20	457-508	157.48	3,940	156,500*	71,000+
ZCS3544	20 - 23	508-584	196.85	4,920	156,500*	71,000+
DOUBLE EYE LACE UP						
ZCS3545	4 - 5	102-127	94	2,360	123,000	55,800
ZCS3546	5 - 6	127-152	94	2,360	123,000	55,800
ZCS3547	6 - 8	152-203	94	2,360	127,500	57,850
ZCS3548	8 - 10	203-255	94	2,360	156,500	71,000
ZCS3549	10 - 12	255-305	94	2,360	156,500	71,000
ZCS3550	12 - 14	305-355	94	2,360	156,500*	71,000
ZCS3551	14 - 16	355-406	118.11	2,950	156,000*	71,000+
ZCS3552	16 - 18	406-457	131.79	3,290	156,500*	71,000+
ZCS3553	18 - 20	457-508	157.48	3,940	156,500*	71,000+
ZCS3554	20 - 23	508-584	196.85	4,920	156,500*	71,000+

HOSE RESTRAINT GRIPS

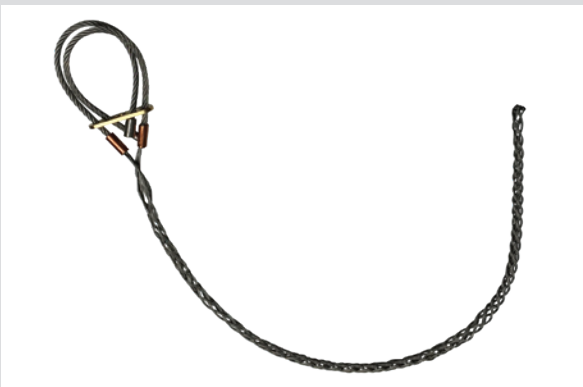
HEAVY DUTY HOSE RESTRAINT GRIPS



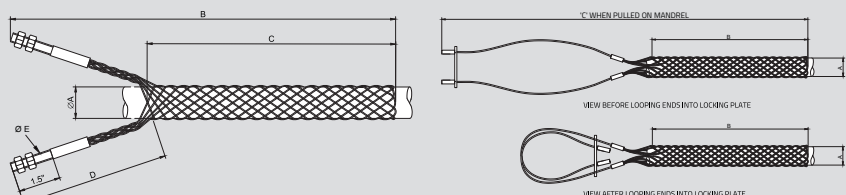
Safety restraining system designed to prevent whipping in the event of a pressurized hose becoming detached from its fitting.

Slingco part no.		Range		Lattice Length		Lattice Weave	Approx. Break Load	
		in	mm	in	mm		lb	kg
DOUBLE THIMBLE EYE - GALVANIZED STEEL								
ZCS5363	Thimble eye	1.0 - 1.5	25 - 38	26	660	Double	11,000	4,911
ZCS5364	Thimble eye	1.5 - 2.5	38 - 63	40	1,016	Double	20,000	8,928
ZCS5365	Thimble eye	2.5 - 3.5	63 - 89	42	1,067	Double	22,000	9,821
ZCS5366	Thimble eye	3.5 - 4.5	89 - 114	44	1,118	Double	27,000	12,053
ZCS5367	Thimble eye	4.5 - 5.5	114 - 140	48	1,219	Double	31,000	13,839
ZCS6012	Thimble eye	5.5 - 7.0	140 - 180	60	1,524	Double	50,000	22,685
ZCS5529	Thimble eye	7.0 - 9.25	180 - 240	78	2,000	Triple	66,000	30,000
DOUBLE THIMBLE EYE - 316 STAINLESS STEEL								
ZCS5650	Thimble eye	1.0 - 1.5	25 - 38	26	660	Double	7,700	3,437
ZCS5651	Thimble eye	1.5 - 2.5	38 - 63	40	1,016	Double	14,000	6,250
ZCS5652	Thimble eye	2.5 - 3.5	63 - 89	42	1,067	Double	15,400	6,874
ZCS5653	Thimble eye	3.5 - 4.5	89 - 114	44	1,118	Double	18,900	8,437
ZCS5654	Thimble eye	4.5 - 5.5	114 - 140	48	1,219	Double	21,700	9,687
ZCS6000	Thimble eye	5.5 - 7.0	140 - 180	60	1,524	Double	35,000	15,880
DOUBLE EYE MULTIWEAVE - MAX STRENGTH - 316 STAINLESS STEEL								
ZCS3995	Thimble eye	1.14 - 1.57	29 - 40	50	1,270	Double	35,000	15,625
ZCS3295	Flex eye	2.75 - 3.44	70 - 87	58	1,460	Multiple	49,000	22,230
ZCS3254	Flex eye	3.00 - 3.50	76 - 89	58	1,460	Multiple	39,200	17,785
ZCS6004	Flex eye	3.50 - 4.75	89 - 120	58	1,460	Multiple	50,000	22,320
ZCS3414	Flex eye	4.75 - 5.10	120 - 130	78	1,981	Multiple	106,000	48,095

SPECIALTY HOSE RESTRAINT GRIPS



Y TYPE THREADED BOLT HOSE GRIP - 316 STAINLESS STEEL							
Slingco part no.	Size range inches (mm)	Ø A mean inches (mm)	Ø B inches (mm)	C inches (mm)	D inches (mm)	Ø E inches (mm)	Approx. Break Load lb (kg)
ZCS5422	0.25 - 0.5 (6 - 13)	0.37 (9.5)	41.0 (1.041)	29.0 (737)	12.0 (305)	5/16 BSW (18 TPI)	2,600 (1,161)
ZCS5423	0.5 - 0.75 (13 - 19)	0.62 (16)	39.0 (991)	27.0 (686)	12.0 (305)	5/16 BSW (18 TPI)	3,500 (1,562)
ZCS5424	1.0 - 1.5 (25 - 38)	1.25 (32)	43.0 (1,092)	31.0 (787)	12.0 (305)	1/2 BSW (12 TPI)	12,000 (5,357)
U TYPE UNIVERSAL EYE HOSE GRIP - 316 STAINLESS STEEL							
Slingco part no.	Size range inches (mm)	Ø A mean inches (mm)	Ø B inches (mm)	C inches (mm)	Approx. Break Load lb (kg)		
ZCS5431	0.25 - 0.5 (6 - 13)	0.37 (9.5)	29.0 (737)	29.0 (737)	2,600 (1,161)		
ZCS5432	0.5 - 0.75 (13 - 19)	0.62 (16)	27.0 (686)	27.0 (686)	3,500 (1,562)		
ZCS5433	1.0 - 1.5 (25 - 38)	1.25 (32)	31.0 (787)	31.0 (787)	12,000 (5,357)		



SUPPORT GRIPS

SINGLE EYE CLOSED MESH CABLE SUPPORT GRIP

Slingco closed mesh support grip in 304 Stainless Steel. Closed mesh for when end of cable is available.



Slingco Part No	Range		Lattice Length		Approx. Break Load	
	in	mm	in	mm	lb	kg
ZCS1893	0.50 - 0.63	12 - 16	9.7	247	567	255
ZCS1894	0.63 - 0.75	16 - 19	9.7	247	890	400
ZCS1895	0.75 - 1.00	19 - 25	13	331	1,040	470
ZCS1896	1.00 - 1.25	25 - 31	13.5	344	1,700	770
ZCS1897	1.25 - 1.50	31 - 38	15	382	1,700	770
ZCS1898	1.50 - 1.75	38 - 44	16.5	420	1,700	770
ZCS1899	1.75 - 2.00	44 - 50	20	509	2,300	1,040
ZCS1900	2.00 - 2.50	50 - 63	21	535	3,400	1,540
ZCS1901	2.50 - 3.00	63 - 76	24	611	3,400	1,540
ZCS1902	3.00 - 3.50	76 - 89	26	662	5,000	2,265
ZCS1903	3.50 - 4.00	89 - 102	29	738	5,000	2,265
ZCS5032	3.50 - 4.50	89 - 114	46	1,168	5,000	2,265

SINGLE EYE SPLIT MESH LACE CLOSING CABLE SUPPORT GRIP

In 304 stainless steel. Split mesh is for when end of cable is not available.



Slingco Part No	Range		Lattice Length		Approx. Break Load	
	in	mm	in	mm	lb	kg
ZCS1904	0.50 - 0.63	12 - 16	9.7	247	567	255
ZCS1905	0.63 - 0.75	16 - 19	9.7	247	890	400
ZCS1906	0.75 - 1.00	19 - 25	13	331	1,040	470
ZCS1907	1.00 - 1.25	25 - 31	13.5	344	1,700	770
ZCS1908	1.25 - 1.50	31 - 38	15	382	1,700	770
ZCS1909	1.50 - 1.75	38 - 44	16.5	420	1,700	770
ZCS1910	1.75 - 2.00	44 - 50	20	509	2,300	1,040
ZCS1911	2.00 - 2.50	50 - 63	21	535	3,400	1,540
ZCS1912	2.50 - 3.00	63 - 76	24	611	3,400	1,540
ZCS1913	3.00 - 3.50	76 - 89	26	662	5,000	2,265
ZCS1914	3.50 - 4.00	89 - 102	29	738	5,000	2,265

SINGLE EYE SPLIT MESH ROD CLOSING CABLE SUPPORT GRIP

Similar to the lace up grip, in 304 Stainless Steel, but in this design it is closed by inserting a metal rod down the length of the grip. For when end of cable is not available.



Slingco Part No	Range		Lattice Length		Approx. Break Load	
	in	mm	in	mm	lb	kg
ZCS2362	0.50 - 0.63	12 - 16	9.7	247	567	255
ZCS2363	0.63 - 0.75	16 - 19	9.7	247	890	400
ZCS2162	0.75 - 1.00	19 - 25	13	331	1,040	470
ZCS2163	1.00 - 1.25	25 - 31	13.5	344	1,700	770
ZCS2164	1.25 - 1.50	31 - 38	15	382	1,700	770
ZCS2165	1.50 - 1.75	38 - 44	16.5	420	1,700	770
ZCS2166	1.75 - 2.00	44 - 50	20	509	2,300	1,040
ZCS2167	2.00 - 2.50	50 - 63	21	535	3,400	1,540
ZCS2168	2.50 - 3.00	63 - 76	24	611	3,400	1,540
ZCS2169	3.00 - 3.50	76 - 89	26	662	5,000	2,265
ZCS2372	3.50 - 4.00	89 - 102	29	738	5,000	2,265

PLEASE NOTE

All grips shown on this page are available in Single Eye, Double Eye, Offset Eye and Universal Eye configurations.

CALL 888 685 9478 FOR MORE DETAILS



NON-METALLIC CABLE GRIPS

Ideal for wet environment, waste water, fiber optic or other applications where abrasion is not an issue and improved weight to break ratio is desired. Slingco's non-metallic grips are made of high-strength aramid fiber with UV protective coating. The non-metallic material is easy to work with even without gloves.

WARNING
Cancer and Reproductive Harm
www.P65Warnings.ca.gov

NS – NON-METALLIC (ARAMID) SINGLE EYE CABLE GRIP



Slingco Part No	Range		Lattice Length		Approx. Break Load	
	in	mm	in	mm	lb	kg
SINGLE EYE SINGLE WEAVE NON-METALLIC GRIP						
ZCS1040	0.38 - 0.75	10 - 20	24	600	2,460	1,115
ZCS1022	0.75 - 1.25	20 - 30	24	600	3,580	1,620
ZCS2923	1.00 - 1.50	25 - 36	24	600	3,580	1,620
ZCS1041	1.25 - 1.50	30 - 40	24	600	4,920	2,230
ZCS1042	1.50 - 2.00	40 - 50	24	600	5,820	2,640
SINGLE EYE DOUBLE WEAVE NON-METALLIC GRIP						
ZCS1023	1.25 - 1.50	30 - 40	24	600	9,860	4,470
ZCS1024	1.50 - 2.00	40 - 50	24	600	11,880	5,390
ZCS1179	2.00 - 2.50	50 - 65	24	600	15,900	7,210
ZCS1180	2.50 - 3.00	65 - 80	24	600	15,900	7,210
ZCS1181	3.00 - 4.00	80 - 100	24	600	15,900	7,210
ZCS4079	4.00 - 5.00	102 - 127	120	3,048	15,900	7,210

ND – NON-METALLIC (ARAMID) DOUBLE EYE CABLE GRIP



Slingco Part No	Range		Lattice Length		Approx. Break Load	
	in	mm	in	mm	lb	kg
DOUBLE EYE SINGLE WEAVE NON-METALLIC GRIP						
ZCS1148	0.38 - 0.75	10 - 20	24	600	2,460	1,115
ZCS1176	0.75 - 1.25	20 - 30	24	600	3,580	1,620
ZCS2922	1.00 - 1.50	25 - 40	24	600	3,580	1,620
ZCS1177	1.25 - 1.50	30 - 40	24	600	4,920	2,230
ZCS1178	1.50 - 2.00	40 - 50	24	600	5,820	2,640
DOUBLE EYE DOUBLE WEAVE NON-METALLIC GRIP						
ZCS1182	1.25 - 1.50	30 - 40	24	600	9,860	4,470
ZCS1183	1.50 - 2.00	40 - 50	24	600	11,880	5,390
ZCS1184	2.00 - 2.50	50 - 65	24	600	15,900	7,210
ZCS1185	2.50 - 3.00	65 - 80	24	600	15,900	7,210
ZCS1186	3.00 - 4.00	80 - 100	24	600	15,900	7,210
ZCS3813	4.00 - 5.00	102 - 127	60.6	1,540	15,900	7,210

NO - NON-METALLIC (ARAMID) OFFSET EYE CABLE GRIP



Slingco Part No	Range		Lattice Length		Approx. Break Load	
	in	mm	in	mm	lb	kg
SINGLE OFFSET EYE SINGLE WEAVE NON-METALLIC GRIP						
ZCS2810	0.38 - 0.75	10 - 20	24	600	2,460	1,115
ZCS2811	0.75 - 1.25	20 - 30	24	600	3,580	1,620
ZCS2921	1.00 - 1.50	25 - 40	24	600	3,580	1,620
ZCS2812	1.25 - 1.50	30 - 40	24	600	4,920	2,230
ZCS2813	1.50 - 2.00	40 - 50	24	600	5,820	2,640
SINGLE OFFSET EYE DOUBLE WEAVE NON-METALLIC GRIP						
ZCS2814	1.25 - 1.50	30 - 40	24	600	9,860	4,470
ZCS2815	1.50 - 2.00	40 - 50	24	600	11,880	5,390
ZCS2816	2.00 - 2.50	50 - 65	24	600	15,900	7,210
ZCS2817	2.50 - 3.00	65 - 80	24	600	15,900	7,210
ZCS2818	3.00 - 4.00	80 - 100	24	600	15,900	7,210

ACCESSORIES

BANDING TOOL

All Steel Banding Tools come with a 3/8" adapter!



The Slingco Banding Tool is the fast and easy way to install banding clamps on your cable grips.

Designed for fast and efficient installation of steel bands for cable grips, hoses and many other applications. The drop forged construction and comfortable design makes it quick and easy to use and guarantee a long and useful tool life.

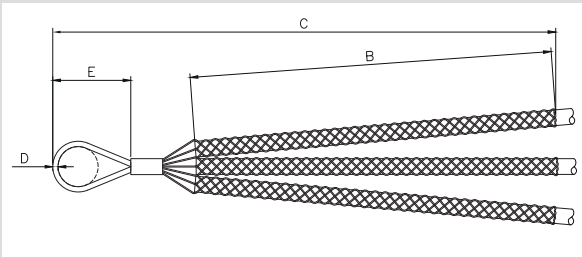
We have a range of steel bands available from stock and can also manufacture custom sizes if required.

WARNING
Cancer and Reproductive Harm
www.P65Warnings.ca.gov

BANDING TOOL & BANDS

CPC2875	Banding tool
CPC2876	Galv Bands 3/8" x 13/16" [100/box]
CPC2880	Galv Bands 5/8" x 1" [100/box]
CPC2879	Galv Bands 5/8" x 1 1/2" [100/box]
CPC2878	Galv Bands 5/8" x 2" [100/box]
CPC2877	Galv Bands 5/8" x 2.5" [50/box]

TRI SOCKS



Slingco part no.	Range in (mm)	Lattice Weave in (mm)	B Length in (mm)	C Length in (mm)	D Length in (mm)	E Length in (mm)	Approx. Break Load lbs (kgs)
ZCS1738	25-38 (1.00-1.50)	Single	15 (380)	26 (660)	0.375 (10)	6 (150)	7,840 (3,500)
ZCS1747	1.5-2.0 (38-50)	Double	18.1 (460)	29.1 (740)	0.375 (10)	6 (150)	11,379 (5,080)
ZCS5697	0.51-0.75 (13-19)	Single	14 (355)	20 (508)	0.315 (8)	3 (75)	2,238 (1,015)

Tri socks allow for the pulling of three similarly sized cables at the same time without the need for bundling. In this manner individual cables can be removed from the grip along the pull path and quickly continue the pull with the remaining cable. This grip is best used when the cables being pulled share only a portion of the pull path. A swivel may be used at the head of the tri sock to lessen torsion buildup for the bundle.

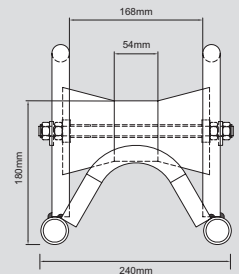
CABLE LAYING ROLLER



ZGP2395

They are of steel construction with zinc plating for general purpose cable installation work in trenches. They are suitable for power, telecoms and utility installations, and can bridge existing cables in trenches or ducts.

Slingco part no.	Base Footprint in (mm)	Height to the top of the Roller in (mm)	Handle Height in (mm)
ZGP2395	12 x 9 1/2 (305 x 240)	7 1/8 (180)	10 (255)



Other cable laying roller configurations are also available, as shown below. Please contact us for more details.



ZGP8209



ZGP8267



ZGP8269



ZGP8268



ZGP8270



ZGP8210

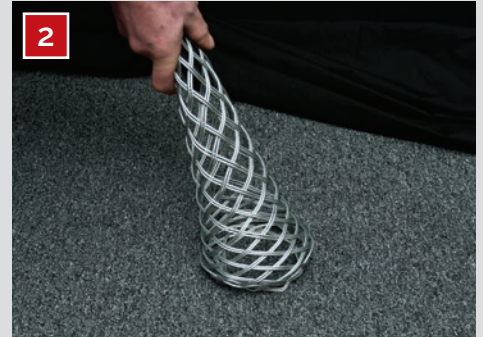
IMPORTANT TECHNICAL INFORMATION

SINGLE AND DOUBLE EYE CABLE GRIP INSTRUCTIONS

PLEASE NOTE: The condition of the cable grip should always be checked prior to use. The correct size of grip should always be used for the intended application. The rated capacity of the grip should never be exceeded. Grips that are worn, bent or otherwise damaged should not be used.



Select the correct grip for the diameter of the conductor.



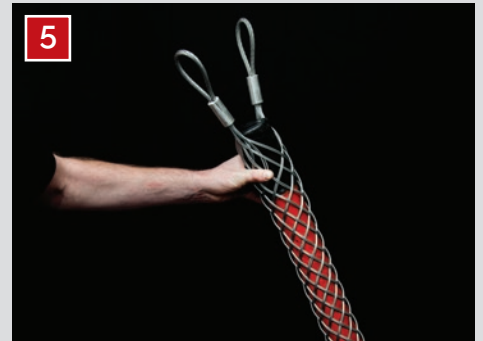
Prior to use, the lattice at the end of the grip needs to be widened. This can be easily achieved by pressing the end of the grip against a hard surface, which causes the lattice to expand.



The grip should then be placed over the end of the conductor...



...and pushed over the conductor.



The grip then needs to be pushed along so that all the lattice is in contact with the conductor.



Once the cable grip is in place on the conductor, two clamps should be fitted to the end of the grip (as shown). We recommend between 1 ¼" (30mm) and 2 ¼" (55mm) away from the end of the cable grip.



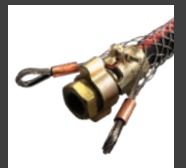
Tape should then be wound around the end of the cable grip furthest away from the eye ends.



This will prevent the cable grip from snagging when in use.

RIGGING, MINING
& CONSTRUCTION,
OIL & GAS,
TRANSMISSION
& DISTRIBUTION,
INDUSTRIAL,
AEROSPACE

**SLINGCO
DELIVERS**



FOR ANY INQUIRIES CALL TODAY ON

888 685 9478

Slingco America, Inc.

3100 Jonquil Drive SE, Smyrna, Georgia, 30080, USA
TOLL FREE: 888 685 9478 · sales@slingcoamerica.com

slingcoamerica.com

Slingco makes no warranty, express or implied, with respect to this product nor with respect to its specifications. In no event shall Slingco be liable for any direct, indirect, punitive, incidental, special consequential damages to property or life, whatsoever, arising out of or connected with the use or misuse of this product. This product is intended for use by qualified professionals having adequate knowledge of its proper use. Aug/ut 2025 - v1.5