

The image features a silhouette of a worker on a tower against a red sky. The worker is positioned on the left side of the tower, reaching towards the center. The tower is a complex lattice structure. In the top left corner, there is a red rectangular logo with the word "slingco" in white lowercase letters and a registered trademark symbol. The overall scene is set against a vibrant red background with some faint clouds.

slingco®

**CABLE INSTALLATION AND SUPPORT
MADE A WHOLE LOT EASIER**



A GLOBAL BUSINESS BUILT ON QUALITY, INNOVATION, SERVICE ...AND REAL FAMILY TIES

We've been living and breathing manufacturing for as long as we can remember. You can blame our Dad for that!

He founded Slingco more than 40 years ago. Since then, we've grown up and so has the company, evolving into an expert design and manufacturing operation, producing high quality tools for cable and conductor installation - products that are renowned for high performance in quality-critical applications.

Slingco America is based in Atlanta, Georgia, but you'll find our products around the world, making heavy-duty cable installation and support a whole lot easier for people working in industries as varied as public utilities, overhead line construction, oil and gas, marine and offshore, civil engineering, aerospace, transport, the military, performing arts, vehicle building, construction, and more.

You can't make mistakes when you're dealing with products like ours. Too much depends on them. That's why we're obsessive about quality and innovation in design and manufacturing, and why nothing leaves our hands that isn't 100% dependable.



Because we understand exactly what your operation needs, we also know cost is a factor. We keep our prices realistic and hold a vast range of stock for fast – even same day – delivery.

We're brothers, partners, and the driving force behind Slingco, but we're only a small part of the whole picture. We've got a fantastic team of skilled people who share our obsession with quality and great service. We're proud of every one of them.

Together, we're going to carry on developing outstanding products. We're going to carry on getting them out to you in record time. And we're going to carry on being the sort of company it's a pleasure to deal with.

MATT DYKINS
PRESIDENT, SLINGCO AMERICA

NICK DYKINS
CEO, SLINGCO LIMITED

Helping you choose the right product

To help guide you and advise where our products are most commonly used we have created the following market logos which you will find adjacent each product in the catalogue.



OHL
(Transmission & Distribution)



CONSTRUCTION



UNDERGROUND
(Transmission & Distribution)



TELECOMS



MINING



OIL & GAS



SUB-SEA/WIND



INDUSTRIAL

WARNING

Cancer and Reproductive Harm www.P65Warnings.ca.gov

Some of the products in this catalog are subject to Prop65 health warnings. For details, please contact us.

PLEASE NOTE: While every effort has been made to ensure accuracy of all content in this catalog, please confirm with your Slingco contact any critical information before purchase.



CABLE PULLING

A Type - High Strength Cable Grip	4
Anti Rotational Device	7
Aramid Cable Grip - NS Type Single Eye	20
Aramid Cable Grip - Ultra-Flex Single Eye	20
Aramid Cable Grip - ND Type Double Eye	21
Aramid Cable Grip - NO Type Offset Eye	21
Banding for Cable Grips	4
Banding Tools	22-23
Cable Laying Rollers	12-13
Connectors: 90°, Rope To Rope, Rope To Swivel	10
DE Type - Double Eye Cable Grip	18
Directional Drilling Swivels	10
Feed Tube for A Type Grips	4
Fiber Optic Cable Grip	7
Hose Restraint Socks - Standard Duty Double Eye	18
Hose Restraint Socks - Heavy Duty Double Eye	19
Junior Type Cable Grip	8
LU Type - Lace Up Cable Grip	14
Line Pulling Swivel - Bright Zinc Plated Steel	5
Line Pulling Swivel - Galvanized	5
MU Type - High Strength Cable Grip	6
OS Type - Offset Eye Cable Grip	8
Open Ended Cable Grip	15
Pole Band System	23
R Type - Rotating Eye Multi-Weave Cable Grip	9
RT Type - Rotating Eye Double Weave Cable Grip	9
Reinforced Eye Underground Grips	11
SE Type - Single Eye Cable Grip	8
ST Type - Single Eye Double Weave Cable Grip	6
Splicing Grip - Rotating Barrel	14
Splicing Grip - Rotating Swivel Link	15
Subsea Marine Cable Grips	16-17
Tri & Quad Pulling Sling	10
Whip Checks	19

TOOLS & ACCESSORIES

12 Ton WH2/WH3 Kearney Type Dies	25
35Kv Jumper Clamp	30
60 Ton Hydraulic Crimping Tool	26
100 Ton Hydraulic Crimping Tool	27
Anchor Rod Pulling Eye	29
Catchblock OHL Catenary Roller	52
Conductor Replacement Roller	52
Dirt Tarps	35
Drive Wrench Assembly	28-29
Fiberglass Extension Arm	33
Glove and Sleeve Bags	33
Guy Wire Dispenser	24
Hand Line Tools	31
Hold Down Weights	51

TOOLS & ACCESSORIES

Jib Head Adapter	24
Mechanical Crimping Tool	25
Pole Light Kit	32
Pole Line Suspension Clamps	51
Pole Puller	34
Pole Stand	35
Pole Staples	51
Ratchet Cutters	26
Reel Lifter	31
Rubber Blanket Accessories	30
Strap Hoists - 2k, 3k & 4k	36-37
Triplex Dispenser	24

CABLE SUPPORT

Bus Drop/Service Grips	45
Conduit Riser Cable Grip - Stainless Steel	46
Deluxe Cord Grips	48
Double Eye Closed Mesh Cable Support Grip	39
Double Eye Split Mesh Lace Closing Cable Support Grip	39
Double Eye Split Mesh Rod Closing Cable Support Grip	39
Dust-Tight Cord Grips	49
Extended Thimble Eye Heavy Duty Double Weave Stainless Steel Cable Grip	50
Heavy Duty Support Grips - Single Eye	42
Heavy Duty Support Grips - Single Eye Lace-Up	42
Heavy Duty Support Grips - Single Eye Rod Closing	42
Heavy Duty Support Grips - Double Eye	43
Heavy Duty Support Grips - Double Eye Lace-Up	43
Heavy Duty Support Grips - Double Eye Rod Closing	43
Hooked Eye Riser Pole Cable Support Grip	46
I-Grips	44
Locking Bale Bus Drop Grips	44
Offset Eye Closed Mesh Cable Support Grip	40
Offset Eye Split Mesh Lace Closing Cable Support Grip	40
Offset Eye Split Mesh Rod Closing Cable Support Grip	40
Single Eye Closed Mesh Cable Support Grip	38
Single Eye Split Mesh Lace Closing Cable Support Grip	38
Single Eye Split Mesh Rod Closing Cable Support Grip	38
Springs	44
Stainless Steel Connector/Box Grip	47
Universal Eye Closed Mesh Cable Support Grip	41
Universal Eye Split Mesh Lace Closing Cable Support Grip	41
Universal Eye Split Mesh Rod Closing Cable Support Grip	41
Wind Turbine Support Grip - Heavy Duty Thimble Offset Eye	50

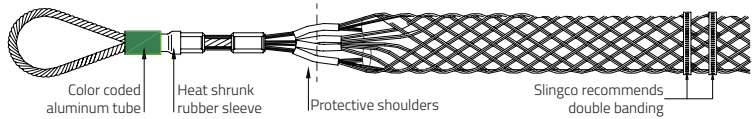
TECHNICAL INFORMATION

Important Technical and Safety Information	53
Single And Double Eye Cable Grip Instructions	54
Lace Up Cable Grip Instructions	55

A TYPE - HIGH STRENGTH CABLE GRIP (HEAVY DUTY)



The strongest grip we produce; can be used for metal wire and synthetic rope pulls. Perfect for overhead transmission and distribution line pulling or any applications with heavy load ratings, e.g. gas, electric railroad, rigging lines and construction pulls. When pulling synthetic rope use a Slingco Feed Tube (see below) to make rope insertion a breeze. To avoid the effects of torsion a line pulling swivel that rotates under load should be used. Use A-Type grips when pulling Guy or Static wire. Galvanized Steel and color coded for ease of identification.



Slingco Part No	Color Code	Rope Diameter Range		Conductor Diameter		Overall Length		Lattice Length		Approx. Break Load	
		in	mm	in	mm	in	mm	in	mm	lb	kg
ZCS1799	Black	0.25 - 0.65	6-16	0.19 - 0.40	5-10	38	965	28	710	7,000	3,180
ZCS3020	Purple	0.30 - 0.40	7.5-10	0.25 - 0.40	6-10	42	1,067	30	760	10,000	4,530
ZCS1800	Dark Green	0.50 - 0.90	13-23	0.38 - 0.63	9.7-16	51	1,300	37	940	14,000	6,360
ZCS3522	Grey	0.44 - 0.90	11-23	0.44 - 0.63	11-16	110	2,800	97	2,470	20,000	9,072
ZCS1801	Red	0.75 - 1.10	19-28	0.63 - 0.88	16-22	74	1,880	58	1,473	20,000	9,072
ZCS5543	Brown	0.75 - 1.10	19-28	0.63 - 0.88	16-22	81	2,060	62	1,579	30,700	13,925
ZCS1802	Blue	1.00 - 1.50	25-38	0.88 - 1.13	22-29	80	2,032	61	1,549	30,700	13,955
ZCS1803	Yellow	1.25 - 1.70	32-43	1.13 - 1.38	29-35	112	2,845	90	2,299	47,000	21,360
ZCS1804	Aluminum	1.50 - 2.10	38-53	1.38 - 1.90	35-50	119	3,020	92	2,336	67,000	30,455

Contact Slingco if you require high strength pulling grips for conductor sizes greater than 1.90".

FEED TUBE



Due to the tight construction of the A Type cable grip, we recommend using the Slingco Feed Tube when inserting cable or rope into the grips. For ease of use, our feed tubes are color-coded to match the A Type Cable grip.



Slingco part no.	Tube to fit rope diameter inches (mm)	Feed tube length inches (mm)	Matches Slingco Cable Grip part no.	Cable grip color
FTU1890	0.25 - 0.65 (6 - 16)	28 (713)	ZCS1799, ZCS3020	Black
FTU1891	0.50 - 0.90 (13 - 23)	40 (1,018)	ZCS1800, ZCS3522	Dark green
FTU1892	0.75 - 1.10 (19 - 28)	52 (1,324)	ZCS1801	Red
FTU1893	1.00 - 1.50 (25 - 38)	67 (1,706)	ZCS1802	Blue
FTU1894	1.25 - 1.70 (32 - 43)	83 (2,113)	ZCS1803	Yellow
FTU1895	1.50 - 2.10 (38 - 53)	96 (2,444)	ZCS1804	Aluminum

BANDING FOR CABLE GRIPS - SECURE GRIPS WITH BANDS



Banding tool					
Slingco part no.	Description				
CPC2875	Standard punch-style banding tool.				
Bands Pre-Looped					
Slingco Part No.	Width	Thickness	Loop diameter	Pack quantity	
CPC2876	3/8"	0.025"	13/16"	100/box	
CPC2880	5/8"	0.030"	1"	100/box	
CPC2879	5/8"	0.030"	1.5"	100/box	
CPC2878	5/8"	0.030"	2.0"	100/box	
CPC2877	5/8"	0.030"	2.5"	50/box	
CPC8532	5/8"	0.030"	3.0"	50/box	
Open End Band - 201 SS					
Slingco part no.	Width	Thickness	Length	Loop diameter	Pack quantity
CPC08596	5/8"	0.030"	24"	6" Single Wrap 3" Double Wrap	50/box

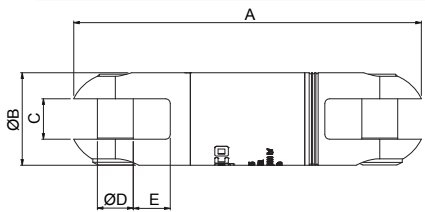
See more banding products on pages 22-23.

LINE PULLING SWIVEL - BRIGHT ZINC PLATED STEEL



Slingco part no.	Safe working load (lb)		A (in)	Ø B (in)	C (in)	Ø D Pin (in)	E Recess (in)	Weight (lb)
	3:1 FOS	5:1 FOS						
ZSW2091	2,250	1,350	3.39	0.87	0.39	0.31	0.39	0.43
ZSW2092	3,500	2,100	3.98	0.98	0.43	0.39	0.43	0.56
ZSW2093	5,000	3,000	4.96	1.26	0.55	0.39	0.55	1.13
ZSW2094	7,000	4,200	5.22	1.38	0.55	0.5	0.54	1.44
ZSW2096	10,000	6,000	6.1	1.62	0.71	0.63	0.65	2.35
ZSW2097	15,000	9,000	7.34	2.09	0.79	0.71	0.83	4.59

Note: 3:1 factor of safety and 5:1 factor of safety provided for reference only



Swivels designed for use in stringing high tension wires for electrical transmission and distribution. Swivels are important in pulling when the lines develop torsion during installation. Swivels will release torque and prevent it from reaching dangerous levels, which can cause damage to the cable. All swivels are stringently quality tested and inspected to ensure optimum performance and reliability.

Swivel and Cable Grip match-up

Approx. breaking strength of cable grip (lb)	Cable grip color code	Size range O.D. (in)	Recommended swivel	Safe working load of swivel (lb)	Revolving Eye	Flexible Eye MU
7,000	Dark green	0.25 - 0.50	ZSW2092	3,500	ZCS2177	ZCS1710
10,500	Brown	0.50 - 0.75	ZSW2093	5,000	ZCS2178	ZCS1711
14,100	Light blue	0.75 - 1.00	ZSW2093	5,000	ZCS2179	ZCS1712
25,000	Gold	1.00 - 1.25	ZSW2096	10,000	ZCS2180	ZCS1713
31,000	Black	1.25 - 1.50	ZSW2096	10,000	ZCS2181	ZCS1714
31,000	Red	1.50 - 1.75	ZSW2096	10,000	ZCS2182	ZCS1715
43,000-49,000	Dark blue	1.75 - 2.25	ZSW2097	15,000	ZSC2183*	ZCS1716†

Note: The above is intended as a rough guide. The recommended working load should be determined by the competent person(s) using the cable grip and/or Slingco swivel.

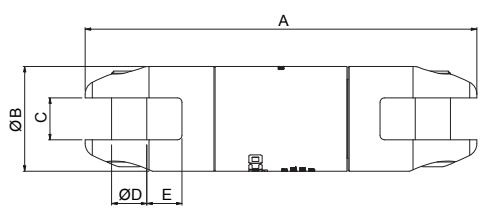
LINE PULLING SWIVEL - GALVANIZED



Slingco Line Swivels are designed to the highest specifications for underground and overhead pulling applications. All swivels are stringently quality tested and inspected to ensure optimum reliability and performance.

Slingco part no.	Safe working load (lb)		A Length (in)	Ø B (in)	C (in)	Ø D Pin (in)	E Recess (in)	Weight (lb)
	3:1 FOS	5:1 FOS						
ZSW2649	4,000	2,400	4.74	1.26	0.61	0.37	0.37	1.01
ZSW2929	8,000	4,800	5.38	1.5	0.63	0.61	0.43	1.75
ZSW6122	10,000	6,000	7	1.87	0.75	0.63	0.63	3.72
ZSW6123	16,000	9,600	10.2	2.44	1	1.12	0.87	9.19
ZSW2857	30,000	18,000	11.13	2.5	1	1.13	0.87	10.44

Note: 3:1 factor of safety and 5:1 factor of safety provided for reference only



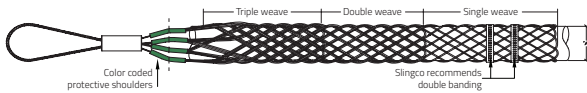
Swivel or Connector Model	ZSW2091 ZSW6554	ZSW2092	ZSW2093 ZSW6555	ZSW2094	ZSW2096 ZSW6122	ZSW2097	ZSW2929	ZSW2649	ZSW2857	ZSW6123	ZSW6556	ZSW6557 ZSW6558 ZSW6559 ZSW6560
Replacement Pin (HEX)	SWI2859	SWI2810	SWI2339	SWI2341	SWI2343	SWI2344	SWI2801	SWI2648	SWI2748	SWI5184	SWI5309	SWI5310

SAFETY NOTE: All Slingco Line Pulling Swivels are designed for straight line pulling and will not support side loads as would be encountered traveling over a bull wheel. Swivel selection should be based on pulling line diameter, grip size, opening dimensions, pin sizes, working load, and sheave groove diameter. Swivels are not designed for general lifting

MU TYPE - HIGH STRENGTH CABLE GRIP (HEAVY-MEDIUM DUTY)

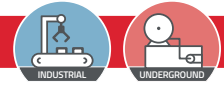


This grip's multi-weave construction is ideal for heavy loads. MU cable grips are color coded for ease of identification. Perfect for stringing overhead transmission and distribution lines and heavy-load pulls of any kind. Use with bare or insulated cable, conductor or wire. The flexible eye connects with Slingco line pulling swivels for trouble free pulling applications. Recommend use of A-Type grips when pulling Guy or Static wire. Made of Galvanized Steel.



Slingco Part No	Color Code	Range		Lattice Length		Approx. Break Load	
		in	mm	in	mm	lb	kg
ZCS1710	Dark Green	0.25 - 0.50	6-12	31	787	7,000	3,170
ZCS1711	Brown	0.50 - 0.75	12-19	45	1,143	10,500	4,760
ZCS1712	Light Blue	0.75 - 1.00	19-25	43	1,092	14,100	6,395
ZCS1713	Gold	1.00 - 1.25	25-32	65	1,651	25,000	11,340
ZCS1714	Black	1.25 - 1.50	32-38	59	1,499	31,000	14,065
ZCS1715	Red	1.50 - 1.75	38-44	82	2,083	31,000	14,065
ZCS1716	Dark Blue	1.75 - 2.25	44-57	82	2,083	49,000	22,230
ZCS1750	Yellow	2.00 - 2.50	50-63	72	1,829	49,000	22,230
ZCS1751	Orange	2.50 - 3.00	63-76	72	1,829	49,000	22,230
ZCS1752	Aluminum	3.00 - 3.50	76-89	74	1,880	49,000	22,230
ZCS1753	Light Green	3.50 - 4.00	89-102	76	1,930	49,000	22,230

ST TYPE - SINGLE EYE DOUBLE WEAVE CABLE GRIP (MEDIUM DUTY)



This Slingco grip features a double weave construction for medium to heavy pulling applications in underground installations.

Slingco Part No	Range		Lattice Length		Approx. Break Load	
	in	mm	in	mm	lb	kg
SHORT LENGTH - GALVANIZED STEEL						
ZCS2511	0.50 - 0.62	13-16	21	534	4,500	2,040
ZCS2512	0.62 - 0.75	16-19	24	610	5,600	2,540
ZCS2513	0.75 - 1.00	19-25	24	610	6,800	3,085
ZCS2514	1.00 - 1.50	25-38	24	610	9,600	4,355
ZCS2515	1.50 - 2.00	38-50	24	610	16,400	7,441
ZCS2516	2.00 - 2.50	50-63	24	610	18,500	8,390
ZCS2517	2.50 - 3.00	63-76	24	610	24,500	11,115
ZCS2518	3.00 - 3.50	76-89	24	610	24,500	11,115
ZCS2519	3.50 - 4.00	89-102	26	660	31,000	14,065
LONGER LENGTH - GALVANIZED STEEL						
ZCS2520	0.75 - 1.00	19-25	36	914	6,800	3,085
ZCS2521	1.00 - 1.50	25-38	36	914	9,600	4,355
ZCS2522	1.50 - 2.00	38-50	36	914	16,400	7,440
ZCS2523	2.00 - 2.50	50-63	36	914	18,500	8,390
ZCS2524	2.50 - 3.00	63-76	36	914	24,500	11,115
ZCS2777	3.00 - 3.50	76-89	36	914	24,500	11,115
ZCS2778	3.50 - 4.00	89-102	40	1,010	31,000	14,065

ACSR Quick Guide - Grip and Swivel Match-Up

Code Word	Cable	Cable OD*	Slingco Cable Grip	Size Range (in)	Break Load (lb)	Recommended Swivel
Raven	1/0	0.398	ZCS1800	0.38-0.63	14,000	ZSW2093
			ZCS3020	0.25-0.40	10,000	ZSW2092
			ZCS1799	0.19-0.40	7,000	ZSW2092
			ZCS1710	0.25-0.50	7,000	ZSW2092
Quail	2/0	0.447	ZCS3522	0.44-0.63	20,000	ZSW2094
Pigeon	3/0	0.502	ZCS1800	0.38-0.63	14,000	ZSW2093
Penguin	4/0	0.563	ZCS1710	0.25-0.50	7,000	ZSW2092
Merlin	336.4	0.684	ZCS5543	0.63-0.88	30,700	ZSW2096
			Trogon	0.692		
			Woodcock	0.701		
Widgeon		0.710	ZCS1712	0.50-0.75	10,500	ZSW2092
Linnet		0.720				
Driole		0.741				

Code Word	Cable	Cable OD*	Slingco Cable Grip	Size Range (in)	Break Load (lb)	Recommended Swivel
Chickadee	397.5	0.743*	ZCS5543	0.63-0.88	30,700	ZSW2096
		0.752	ZCS1801	0.63-0.88	20,000	ZSW2096
		0.762	ZCS1712	0.75-1.00	14,100	ZSW2093
		0.772	*ZCS1711	0.50-0.75	10,500	ZSW2092
		0.783				
Ibis	477	0.806				
		0.814	ZCS3522	0.63-0.88	30,700	ZSW2096
		0.823	ZCS1800	0.63-0.88	20,000	ZSW2096
		0.834				
		0.846	ZCS1710	0.75-1.00	14,100	ZSW2093
Hawk		0.858				

Note: Quick Guide provided as reference only. Each project's requirements should be taken into account when selecting the proper grip.

FIBER OPTIC CABLE GRIP



Dual weave design from galvanized wire rope. Used for the installation of fiber optic cables for either overhead or underground applications. Made of Galvanized Steel.

Slingco Part No	Range		Lattice Length		Overall Length		Approx. Break Load	
	in	mm	in	mm	in	mm	lb	kg
ZCS2008	0.11 - 0.23	2.5-5.6	11	265	18	455	950	431
ZCS2009	0.21 - 0.36	5.3-9.2	15	370	22	560	1,650	748
ZCS2010	0.32 - 0.49	8.1-12.5	19	470	27	690	2,200	998
ZCS2011	0.42 - 0.62	10.7- 5.8	20	515	29	735	2,750	1,247
ZCS2012	0.53 - 0.75	13.5-19.1	23	595	32	815	3,700	1,678
ZCS2013	0.64 - 0.88	16.3-22.4	25	645	34	865	4,250	1,678
ZCS2014	0.75 - 1.00	19.1-25.5	27	720	37	940	4,250	1,928



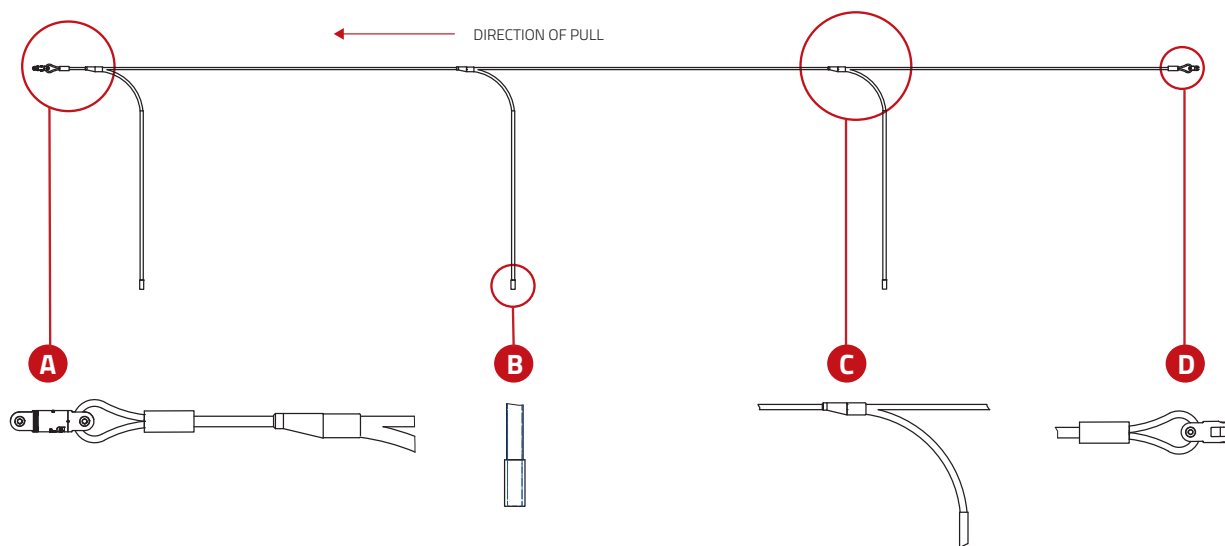
ANTI ROTATIONAL DEVICE



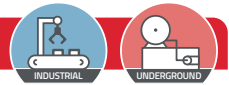
The device prevents the cable from twisting as it travels over pulling blocks. Left uncontrolled, the optical cable's delicate glass fibers could be permanently damaged during installation.

- Stops cables from twisting as they pass over pulling blocks
- For use with fiber optic and OPGW cable
- Prevents irreparable damage to delicate fiber optics caused by cable twists during installation
- The ARD has weighted attachments that hang down while stringing, keeping the ARD vertical to stop cable rotation
- ARD attachments collapse in line, enabling them to travel easily over pulling blocks
- The ARD includes one 5,000 lb swivel attached to the head of the device

Specification	
Slingco Part No.	ZAD3799
Overall Length	29' Approx.
Working load (@3:1 Safety Factor)	5,000 lbs
Length of Attachments	8' Approx.
Weight of Attachment	14 lbs each Approx.



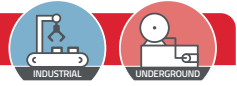
SE TYPE - SINGLE EYE CABLE GRIP (MEDIUM-LIGHT DUTY)



Ideal for pulling light to medium loads; typical application - 'standard pull' of single or group of cables. Available in Galvanized and 316 Stainless Steel.

Slingco Part No	Range		Lattice Weave	Lattice Length		Overall Length		Approx. Break Load	
	in	mm		in	mm	in	mm	lb	kg
SINGLE EYE STANDARD GRIP - GALVANIZED									
ZCS0320	0.25 - 0.50	10-13	Single	9	230	12	305	1,680	760
ZCS0321	0.50 - 0.75	13-19	Single	14	355	17	430	2,240	1,015
ZCS0322	0.75 - 1.00	19-25	Single	16	405	20	510	5,600	2,540
ZCS0323	1.00 - 1.50	25-38	Single	18	455	24	610	7,840	3,555
ZCS0324	1.50 - 2.00	38-50	Double	21	535	29	735	8,800	3,992
ZCS0325	2.00 - 2.50	50-63	Double	24	610	34	865	11,200	5,080
ZCS0326	2.50 - 3.50	63-89	Double	27	685	39	990	13,440	6,095
ZCS0327	3.50 - 4.50	89-115	Double	27	685	39	990	15,680	7,110
ZCS0821	4.50 - 5.50	115-140	Double	27	685	39	990	15,680	7,110
SINGLE EYE STANDARD GRIP - 316 STAINLESS STEEL									
ZCS1380	0.25 - 0.50	10-13	Single	9	230	12	305	1,344	610
ZCS1523	0.50 - 0.75	13-19	Single	14	355	17	430	1,792	810
ZCS1373	0.75 - 1.00	19-25	Single	16	405	20	510	4,480	2,030
ZCS1952	1.00 - 1.50	25-38	Single	18	455	24	610	6,272	2,845
ZCS1381	1.50 - 2.00	38-50	Double	21	535	29	735	8,960	4,065
ZCS1977	2.00 - 2.50	50-63	Double	24	610	34	865	8,960	4,065
ZCS1979	2.50 - 3.50	63-89	Double	27	685	39	990	10,752	4,875
ZCS1980	3.50 - 4.50	89-115	Double	27	685	39	990	12,544	5,690
ZCS1981	4.50 - 5.50	115-140	Double	27	685	39	990	12,544	5,690

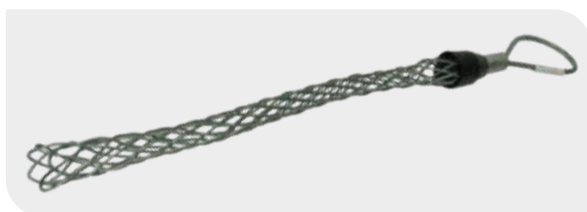
OS TYPE - OFFSET EYE CABLE GRIP



Similar to the SE Type single eye cable grip, but for when offset positioning is required. Excellent for pulling slack out of lines that have been pulled. May also be used for removing underground cables when end of cable is not available.

Slingco Part No	Range		Lattice Weave	Lattice Length		Overall Length		Approx. Break Load	
	in	mm		in	mm	in	mm	lb	kg
OFFSET EYE STANDARD GRIP - GALVANIZED									
ZCS1860	0.25 - 0.50	6-13	Single	9	230	12	305	1,680	760
ZCS1861	0.50 - 0.75	13-19	Single	14	355	17	430	2,240	1,015
ZCS1862	0.75 - 1.00	19-25	Single	16	405	20	510	5,600	2,540
ZCS1863	1.00 - 1.50	25-38	Single	18	455	24	610	7,840	3,555
ZCS1864	1.50 - 2.00	38-50	Double	21	535	29	735	11,200	5,080
ZCS1865	2.00 - 2.50	50-63	Double	24	610	34	865	11,200	5,080
ZCS1866	2.50 - 3.50	63-89	Double	27	685	39	990	13,440	6,095
ZCS1867	3.50 - 4.50	89-115	Double	27	685	39	990	15,680	7,110
ZCS1974	4.50 - 5.50	115-140	Double	27	685	39	990	15,680	7,110
OFFSET EYE STANDARD GRIP - 316 STAINLESS STEEL									
ZCS1986	0.25 - 0.50	6-13	Single	9	230	12	305	1,344	610
ZCS1987	0.50 - 0.75	13-19	Single	14	355	17	430	1,792	810
ZCS1988	0.75 - 1.00	19-25	Single	16	405	20	510	4,480	2,030
ZCS1989	1.00 - 1.50	25-38	Single	18	455	24	610	6,272	2,845
ZCS1990	1.50 - 2.00	38-50	Double	21	535	29	735	8,960	4,065
ZCS1991	2.00 - 2.50	50-63	Double	24	610	34	865	8,960	4,065
ZCS1992	2.50 - 3.50	63-89	Double	27	685	39	990	10,752	4,875
ZCS1993	3.50 - 4.50	89-115	Double	27	685	39	990	12,544	5,690
ZCS1994	4.50 - 5.50	115-140	Double	27	685	39	990	12,544	5,690

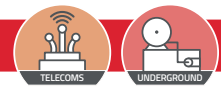
JUNIOR TYPE CABLE GRIP (LIGHT DUTY)



Light duty pulling grips. Designed with flexible eye and made of galvanized wire. Use for lighter weight pulling applications like pulling through conduit runs or indoor pulls.

Slingco Part No	Range		Lattice Length (M)		Eye Length (B)		Approx. Break Load	
	in	mm	in	mm	in	mm	lb	kg
ZCS8562	0.25 - 0.36	6.4 - 9.1	7.5	190.5	2.5	63.5	450	204
ZCS8563	0.37 - 0.49	9.4 - 12.4	11.0	279.4	3.0	76.2	900	408
ZCS8564	0.50 - 0.61	12.7 - 15.5	12.5	317.5	3.0	76.2	1,300	589
ZCS8643	0.50 - 0.75	12.7 - 19.0	16.5	419.1	4.5	114.3	2,240	1,016
ZCS8565	0.62 - 0.74	15.7 - 19.0	16.5	419.1	4.5	114.3	1,950	884
ZCS8566	0.75 - 0.99	19.1 - 25.1	17.0	431.8	4.0	101.6	2,800	1,270
ZCS8567	1.00 - 1.25	25.4 - 31.5	17.5	444.5	4.5	114.3	3,900	1,769

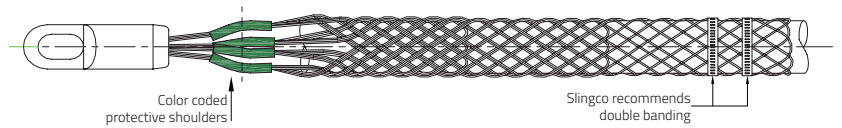
R TYPE - ROTATING EYE MULTI-WEAVE CABLE GRIP (UNDERGROUND)



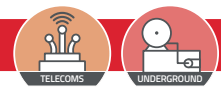
Like the MU type, the rotating eye cable grip has a triple weave construction and is color coded for ease of identification. The steel forged revolving head is ideal for connecting to Slingco swivels. Warning: The Slingco rotating eye does not revolve under load and does not replace the use of a line swivel. Please see page 5 for swivel and grip match-up and safety and technical information. Made of Galvanized Steel.



Slingco Part No	Color Code	Range		Lattice Length		Approx. Break Load	
		in	mm	in	mm	lb	kg
ZCS2177	Dark Green	0.25 - 0.50	6-12	28	720	7,000	3,175
ZCS2178	Brown	0.50 - 0.75	12-19	39	978	10,500	4,760
ZCS2179	Light Blue	0.75 - 1.00	19-25	47	1,199	14,100	6,395
ZCS2180	Gold	1.00 - 1.25	25-32	60	1,529	25,000	11,340
ZCS2181	Black	1.25 - 1.50	32-38	51	1,289	31,000	14,061
ZCS2182	Red	1.50 - 1.75	38-44	73	1,860	31,000	14,061
ZCS2183	Dark blue	1.75 - 2.25	44-57	69	1,747	43,000	19,505
ZCS2779	Yellow	2.00 - 2.50	51-63	54	1,370	48,000	21,772
ZCS2780	Orange	2.50 - 3.00	63-76	52	1,311	48,000	21,772
ZCS2781	Aluminum	3.00 - 3.50	76-89	53	1,342	48,000	21,772
ZCS2782	Light Green	3.50 - 4.00	89-102	54	1,351	48,000	21,772



RT TYPE - ROTATING EYE DOUBLE WEAVE CABLE GRIP (UNDERGROUND)



Slingco Part No	Range		Lattice Length		Approx. Break Load	
	in	mm	in	mm	lb	kg
SHORT LENGTH - GALVANIZED STEEL						
ZCS2734	0.50 - 0.62	13 - 16	12	300	5,600	2,540
ZCS2735	0.62 - 0.75	16 - 19	12	305	6,800	3,084
ZCS2736	0.75 - 1.00	19 - 25	18.5	474	6,800	3,084
ZCS2738	1.00 - 1.50	25 - 38	21.5	549	12,800	5,806
ZCS2739	1.50 - 2.00	38 - 50	22	552	16,400	7,440
ZCS2740	2.00 - 2.50	50 - 63	23	587	27,200	12,338
ZCS2741	2.50 - 3.00	63 - 76	25	642	33,000	14,969
ZCS2742	3.00 - 3.50	76 - 89	29	731	41,000	19,504
ZCS2743	3.50 - 4.00	89 - 102	32	804	43,000	19,504
ZCS2744	4.00 - 4.50	102 - 115	32.5	826	43,000	19,504
STANDARD - LONGER LENGTH - GALVANIZED STEEL						
ZCS2745	0.50 - 0.62	13 - 16	16	405	5,600	2,540
ZCS2746	0.62 - 0.75	16 - 19	17	436	6,800	3,084
ZCS2747	0.75 - 1.00	19 - 25	30	765	6,800	3,084
ZCS2748	1.00 - 1.50	25 - 38	32	812	12,800	5,806
ZCS2749	1.50 - 2.00	38 - 50	30	747	16,400	7,439
ZCS2750	2.00 - 2.50	50 - 63	29	740	27,200	12,338
ZCS2751	2.50 - 3.00	63 - 76	35	893	33,000	14,969
ZCS2752	3.00 - 3.50	76 - 89	40	1,005	41,000	18,597
ZCS2753	3.50 - 4.00	89 - 102	40	1,014	43,000	19,504
ZCS2754	4.00 - 4.50	102 - 115	37.5	947	43,000	19,504
ZCS2755	4.50 - 5.00	115 - 127	53	1,350	43,000	19,504
ZCS2756	5.00 - 6.00	127 - 153	54	1,361	48,000	21,772
ZCS2757	6.00 - 7.00	153 - 178	62	1,563	48,000	21,772

Double weave construction for medium to heavy pulling applications in underground installations. Additionally its steel forged revolving head is ideal for connecting to Slingco swivels. Warning: The Slingco RT Type Rotating Eye Cable Grip does not revolve under load. The rotating eye does not replace the need for a swivel. Please see page 5 for swivel and grip match-up and safety and technical information.

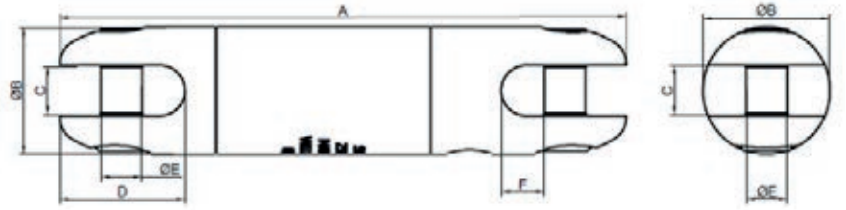
DIRECTIONAL DRILLING SWIVELS



Slingco Directional Drilling Swivels are designed to counter rotational forces caused by boring equipment used in underground pulling and drilling applications. Grease nipple included for removal of dirt and contaminants. Made of carbon steel and zinc passivated for durability. Contains high-strength hex pins. Quality tested and inspected to ensure optimum reliability and performance.



Slingco Part No	Safe Working Load (3:1)		A		Ø B		C		D		Ø E		F	
	lb	kN	in	mm	in	mm	in	mm	in	mm	in	mm	in	mm
ZSW11133	8,500	37.8	7.24	183.8	1.62	41.2	0.63	16.0	1.60	40.6	0.53	13.4	0.55	13.9
ZSW11134	10,000	44.4	8.32	211.3	2.00	50.8	0.75	19.0	1.77	45.0	0.59	14.9	0.75	19.0



TRI & QUAD PULLING SLING



This staggered pulling sling is designed to allow the pulling of multiple conductors at the same time while minimizing the overall diameter of your pulling bundle. These pulling slings come in a three leg or four leg versions. One should use a swivel for each leg and at the head of the sling to release torsion and allow the conductors to rotate freely. The suggested swivels are listed with each model.

Slingco Part No.	Leg 1 Length		Leg 2 Length		Leg 3 Length		Leg 4 Length		Head of Sling Swivel Suggestion	Leg Swivel Suggestion
	in	mm	in	mm	in	mm	in	mm		
ZSH2264	20.5	520	34.65	880	52.75	1340	n/a	n/a	ZSW2094	ZSW2092
ZSH2265	20.5	520	34.65	880	52.75	1340	69.3	1760	ZSW2096	ZSW2092

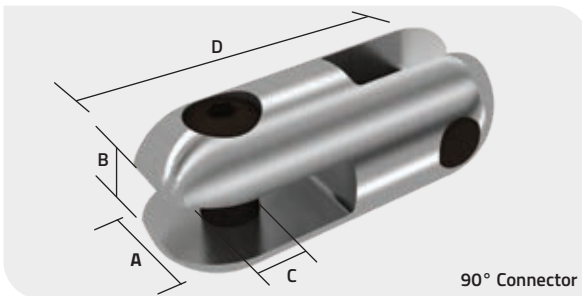
Working Load Limit (3:1) 2,300 lb per leg; 7,100 lb full assembly



CONNECTORS: 90°, ROPE TO ROPE, ROPE TO SWIVEL



Use to connect rope, swivels and other objects. With high strength pins and smooth rollers you can safely connect rope without fear of fraying or damage. Use the convenient 90° connectors to link wire and other non-rope items. Connectors have high strength hex pins. The Rope to Rope connector has two rollers to protect rope from becoming frayed.



90° Connector

90° Connector

Slingco part no.	Safe working load lb (kg)	A in (mm)	B in (mm)	C in (mm)	D in (mm)	Weight lb (kg)
ZSW6554	2,500 (1,134)	7/8 (22)	3/8 (9.6)	5/16 (8)	2 1/8 (54.0)	0.17 (0.08)
ZSW6555	5,000 (2,240)	1 1/4 (31.8)	17/32 (13.5)	13/32 (10)	2 7/8 (73.0)	0.46 (0.21)
ZSW6556	9,000 (4,030)	1 1/2 (38.1)	19/32 (15)	1/2 (12.5)	3 3/8 (86)	0.73 (0.33)
ZSW6557	15,000 (6,800)	2 (50.8)	25/32 (20)	11/16 (18.0)	4 9/16 (116)	2.00 (0.91)

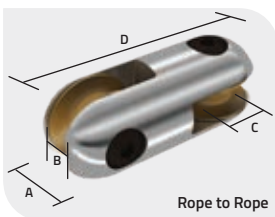
Rope to Rope Connector

Slingco part no.	Safe working load lb (kg)	Max rope dia. in (mm)	A in (mm)	B in (mm)	C in (mm)	D in (mm)	Weight lb (kg)
ZSW6558	15,000 (6,800)	7/8 (22.2)	2 (50.8)	15/16 (24)	11/16 (18)	5 1/2 (140)	2.70 (1.23)

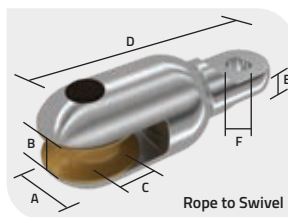
Rope to Swivel Connector

Slingco part no.	Safe working load lb (kg)	Max rope dia. in (mm)	A in (mm)	B in (mm)	C in (mm)	D in (mm)	E in (mm)	F in (mm)	Weight lb (kg)
ZSW6559	7,000 (3,170)	7/8 (22.2)	2 (50.8)	15/16 (24)	11/16 (18)	5 5/16 (135)	1/2 (12.7)	17/32 (13.5)	2.09 (0.95)
ZSW6560	15,000 (6,800)	7/8 (22.2)	2 (50.8)	15/16 (24)	11/16 (18)	5 3/8 (137)	21/32 (16.7)	3/4 (18)	2.54 (1.15)

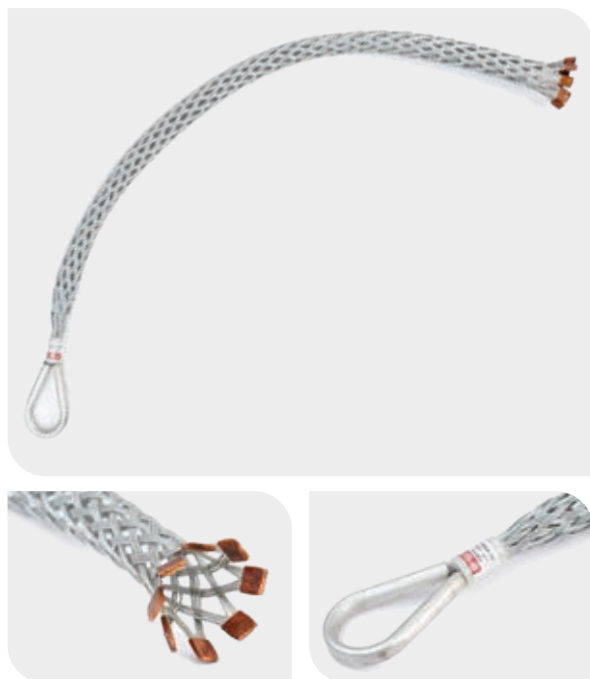
Safe working load based upon 3:1 factor of safety.



Rope to Rope



Rope to Swivel

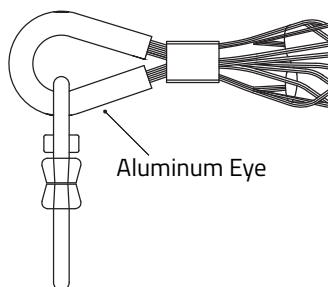


This line of grips are specially designed for underground applications. The eye is enclosed in an aluminum tube which provides added support when running within conduit and trenches. Plus these underground pulling grips are made from coated airline wire for added strength and flexibility.

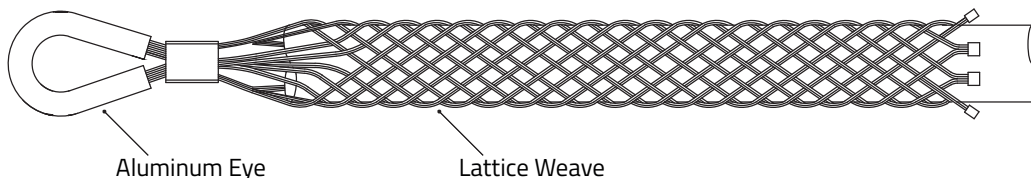
Now with expanded range capacity use one grip for a wider range of diameters. Plus the expanded range allows for easier installation on conductor or any cylindrical object. As with all pulling applications Slingco strongly recommends banding. See grip installation instructions on page 50.

Slingco Part No.	Range in (mm)	Weave (Coated Galv. Wire)	Lattice Length in (mm)	Eye Opening in (mm)	Approx. Break lb (kg)
SINGLE EYE SINGLE / DOUBLE WEAVE PVC COATED GALVANIZED - 0.25 - 0.50" (6 - 13mm)					
ZCS6355	0.25-0.50 (6 - 13)	Single	18 (457)	0.70 (18)	1,500 (680)
ZCS6356	0.25-0.50 (6 - 13)	Single	24 (610)	0.70 (18)	1,500 (680)
ZCS6357	0.25-0.50 (6 - 13)	Double uncoated	18 (457)	0.70 (18)	1,588 (3,500)
ZCS6358	0.25-0.50 (6 - 13)	Double uncoated	24 (610)	0.70 (18)	1,588 (3,500)
ZCS8717	0.25-0.50 (6 - 13)	Triple	24 (610)	Swivel Connector	4,000 (1,814)
SINGLE EYE SINGLE / DOUBLE / TRIPLE WEAVE PVC COATED GALVANIZED - 0.50 - 0.75" (13 - 19MM)					
ZCS6359	0.50-0.75 (13 - 19)	Single	18 (457)	0.70 (18)	1,500 (680)
ZCS6360	0.50-0.75 (13 - 19)	Single	24 (610)	0.70 (18)	1,500 (680)
ZCS6361	0.50-0.75 (13 - 19)	Double uncoated	18 (457)	0.70 (18)	4,000 (1,814)
ZCS6362	0.50-0.75 (13 - 19)	Double uncoated	24 (610)	0.70 (18)	4,000 (1,814)
ZCS6363	0.50-0.75 (13 - 19)	Triple	12 (305)	0.87 (22)	5,200 (2,359)
ZCS6364	0.50-0.75 (13 - 19)	Triple	18 (457)	0.87 (22)	5,200 (2,359)
ZCS6365	0.50-0.75 (13 - 19)	Triple	24 (610)	0.87 (22)	5,200 (2,359)
ZCS6366	0.50-0.75 (13 - 19)	Triple	36 (914)	0.87 (22)	5,200 (2,359)
ZCS8718	0.50-0.75 (13 - 19)	Triple	24 (610)	Swivel Connector	8,480 (3,785)
SINGLE EYE SINGLE / DOUBLE / TRIPLE WEAVE PVC COATED GALVANIZED - 0.75 - 1.25" (19-32MM)					
ZCS6367	0.75-1.25 (19 - 32)	Single	18 (457)	0.87 (22)	3,000 (1,361)
ZCS6368	0.75-1.25 (19 - 32)	Single	24 (610)	0.87 (22)	3,000 (1,361)
ZCS6369	0.75-1.25 (19 - 32)	Double	18 (457)	0.87 (22)	6,000 (2,722)
ZCS6370	0.75-1.25 (19 - 32)	Double	24 (610)	0.87 (22)	6,000 (2,722)
ZCS6371	0.75-1.25 (19 - 32)	Triple	18 (457)	0.87 (22)	7,500 (3,402)
ZCS6372	0.75-1.25 (19 - 32)	Triple	24 (610)	0.87 (22)	10,000 (4,537)
ZCS8719	0.75-1.25 (19 - 32)	Triple	25.5 (650)	Swivel Connector	6,000 (2,722)
SINGLE EYE TRIPLE WEAVE PVC COATED GALVANIZED - 1.25 - 4.88" (32 - 124MM)					
ZCS6373	1.25-2.0 (32 - 51)	Triple	26 (660)	1.42 (36)	7,500 (3,402)
ZCS6374	1.25-2.0 (32 - 51)	Triple	32 (813)	1.42 (36)	10,500 (4,764)
ZCS8720	1.25-2.0 (32 - 51)	Triple	30 (762)	Swivel Connector	10,500 (4,764)
ZCS6375	2.0-2.75 (51 - 70)	Triple	32 (813)	1.91 (48.5)	10,500 (4,764)
ZCS6376	2.0-2.75 (51 - 70)	Triple	38 (965)	1.91 (48.5)	13,500 (6,125)
ZCS8721	2.0-2.75 (51 - 70)	Triple	36 (914)	Swivel Connector	13,500 (6,125)
ZCS6377	2.75-3.5 (70 - 89)	Triple	38 (965)	1.91 (48.5)	13,500 (6,125)
ZCS6378	2.75-3.5 (70 - 89)	Triple	46 (1,168)	1.91 (48.5)	16,500 (7,486)
ZCS8722	2.75-3.5 (70 - 89)	Triple	36 (914)	Swivel Connector	16,500 (7,486)
ZCS6379	3.5-4.25 (89 - 108)	Triple	46 (1,168)	1.91 (48.5)	16,500 (7,486)
ZCS6380	3.5-4.25 (89 - 108)	Triple	52 (1,321)	1.91 (48.5)	19,500 (8,847)
ZCS8723	3.5-4.25 (89 - 108)	Triple	36 (914)	Swivel Connector	19,500 (8,847)
ZCS6381	4.25-4.87 (108 - 124)	Triple	52 (1,321)	1.91 (48.5)	18,000 (8,167)
ZCS6382	4.25-4.87 (108 - 124)	Triple	58 (1,473)	1.91 (48.5)	19,500 (8,847)
ZCS8724	4.25-4.87 (108 - 124)	Triple	40.6 (1,030)	Swivel Connector	21,000 (9,375)

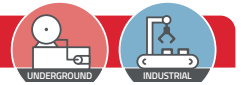
Models WITH Swivel Connector



Models WITHOUT Swivel Connector



BRIDGE TYPE CABLE LAYING ROLLER



Made of steel with zinc plating for general purpose cable installation work in trenches or over rough surfaces. They are suitable for power, telecoms and utility installations, and can bridge existing cables or conduit in trenches or ducts.

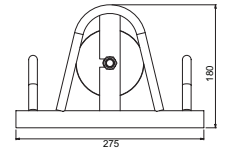
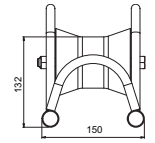
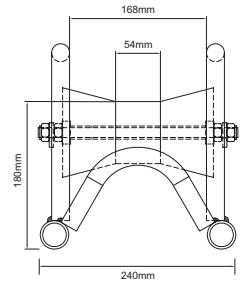
The Compact Cable Roller is for use in narrow trenches and/or in confined areas. Contact Slingco if you have custom roller needs.

Bridge Type Cable Roller

Slingco Part No.	Base Footprint in (mm)	Height to top of roller in (mm)	Handle height in (mm)
ZGP2395	12 x 9.5 (305 x 240)	7.125 (180)	10 (255)

Compact Bridge Type Cable Laying Roller

Slingco Part No.	Base Footprint in (mm)	Height in (mm)	Max Cable Diameter in (mm)	Weight lb (kg)
ZGP8270	10.83 x 5.9 (275 x 150)	7 (180)	3.54 (90)	5.5 (2.5)



* Drawing measurements in mm

EDGE MOUNT MANHOLE LEAD-IN CABLE LAYING ROLLER (HEAVY DUTY)

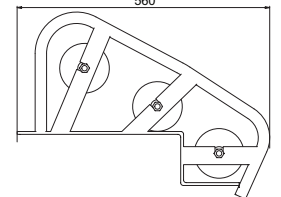
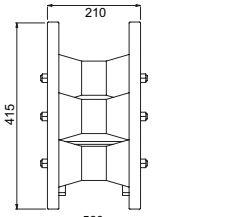


The manhole cable roller leads the cable from the drum into the jointbox/manhole or the winch bond out of the manhole.

- Heavy duty tubular steel construction
- Suitable for cables up to 130mm
- Three x 0.11" x 4.33" diameter steel rollers fitted with sealed precision roller bearings
- Zinc plated
- Weight: 22.05 lb

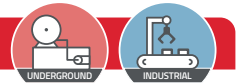
* The Diablo Rollers can be substituted with a heavy gauge 3.5" tubular Steel Roller fitted oil impregnated maintenance free bushes for use with the heavier cables.

Slingco Part No.	Base Footprint in (mm)	Height in (mm)
ZGP8209	22 x 8.25 (560 x 210)	22 x 8.25 (415)



* Drawing measurements in mm

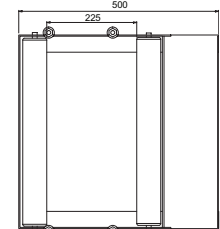
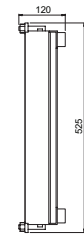
CABLE DRUM ROTATOR



This is a compact light weight Cable Drum Rotator. Drums are simply rolled up the ramp on to the adjustable rollers to allow it to spin freely.

- Pressed steel construction
- Ideal for where space is limited.
- 2.36" diameter zinc plated rollers
- Sealed roller bearings fitted
- Spring loaded shafts for easy replacement/adjustment
- Capacity 440 lb
- Max / min drum size 31.5" / 11.81"
- Drum Width 17.72"
- Zinc plated finish
- Weight: 23.15 lb

Slingco Part No.	Base Footprint in (mm)	Height in (mm)	Max. Capacity lb (kg)
ZGP8267	19.68 x 20.66 (500 x 525)	4.72 (120)	440 (200)



* Drawing measurements in mm

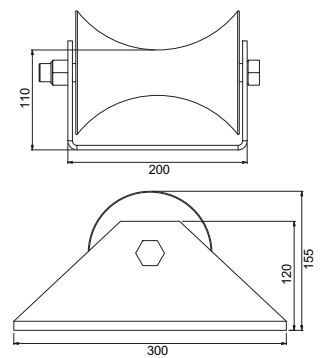
HEAVY DUTY STRAIGHT LINE CABLE LAYING ROLLER



The diablo roller is machined with a 4.2" radius giving a maximum cable diameter capacity of 8.43".

- Heavy duty folded frame straight line roller
- Aluminium diablo roller
- Sealed roller bearing and 0.787" shaft
- Galvanised finish
- Weight : 15.43 lb

Slingco Part No.	Base Footprint in (mm)	Height in (mm)
ZGP8268	11.81 x 7.87 (300 x 200)	6.1 (155)



* Drawing measurements in mm

HEAVY DUTY TRIPLE CORNER CABLE LAYING ROLLER

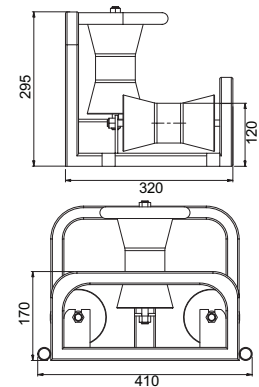


This is a heavy duty corner cable roller for use in most cable laying applications. They can be used singularly or linked together using link pins to form a full bend. All products in the bend roller range have the same link points to facilitate various bend/roller configurations.

- Heavy duty corner roller made from tubular sections
- Three x 0.11" x 4.33" diameter large waisted steel rollers*
- Sealed roller bearing fitted
- Zinc plated finish
- Universal link pin mount positions
- Weight 18.75 lb

* The diablo rollers can be substituted with a heavy gauge 3.5" tubular steel roller fitted with oil impregnated maintenance free bushes.

Slingco Part No.	Base Footprint in (mm)	Height in (mm)
ZGP8269	16.14 x 12.6 (410 x 320)	11.61 (295)



* Drawing measurements in mm

EDGE MOUNT MANHOLE LEAD-IN CABLE LAYING ROLLER (LIGHT DUTY)

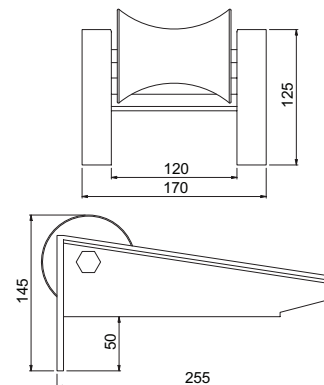


The manhole cable roller leads the cable from the drum into the vault/manhole or the winch bond out of the manhole. The roller has 2 hooks for location on the edge of the manhole.

- Heavy steel section construction
- 3" diameter aluminium roller*
- Fitted with oil-impregnated maintenance-free bushes
- Sealed precision roller bearings
- Zinc plated or powder coated finish
- Weight 6.6 lb

*The aluminium roller can be substituted with a solid steel roller when using wire winch bond thus preventing damage.

Slingco Part No.	Base Footprint in (mm)	Height in (mm)
ZGP8210	10 x 6.7 (255 x 170)	5.7 (145)



* Drawing measurements in mm

LU TYPE - LACE UP CABLE GRIP

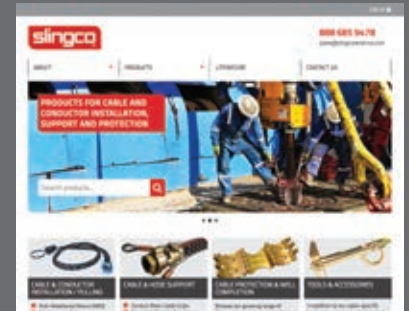


Ideal for pulling light to medium loads; the LU type is fitted to the cable being pulled by stitching it together, like a football. Mainly used where a 'typical' cable grip can't be fitted over a connector at the end of a cable. For use in pulling when the end is not accessible. The LU Type is wrapped around the cable, then closed with the wire lace provided. Both eye loops may be inserted into the same swivel, clevis, shackle or hook to allow pulling. See Lace Up instructions on page 55.

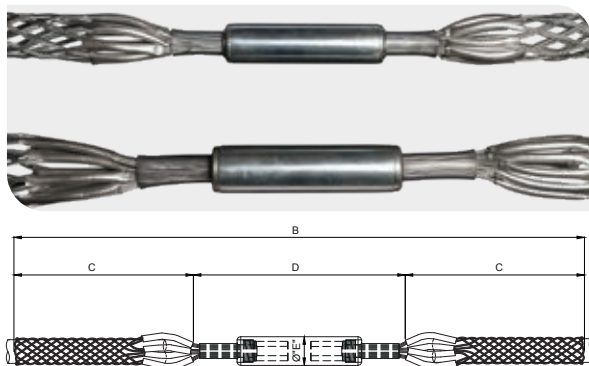
Slingco Part No	Range		Lattice Weave	Lattice Length		Overall Length		Approx. Break Load	
	in	mm		in	mm	in	mm	lb	kg
LACE UP STANDARD GRIP - GALVANIZED									
ZCS1157	0.25 - 0.50	6-13	Single	8	230	17	305	1,680	760
ZCS0872	0.50 - 0.75	13-19	Single	17	355	22	430	2,240	1,015
ZCS0871	0.75 - 1.00	19-25	Single	14.5	405	19	510	5,600	2,540
ZCS0328	1.00 - 1.50	25-38	Single	15	455	22	610	6,000	3,555
ZCS0329	1.50 - 2.00	38-50	Double	27	535	36	735	11,200	5,080
ZCS0330	2.00 - 2.50	50-63	Double	26	610	36	865	11,200	5,080
ZCS0331	2.50 - 3.50	63-89	Double	22	685	31	990	13,440	6,095
ZCS0853	3.50 - 4.50	89-115	Double	27	685	39	990	15,680	7,110
ZCS1109	4.50 - 5.50	115-140	Double	27	685	39	990	15,680	7,110
ZCS4463	4.72 - 5.90	120-150	Triple	59	1,500	102	2,600	32,928	14,700
ZCS3584	5.31 - 6.30	135-160	Double	39	1,000	63	1,600	38,080	17,000
ZCS3585	6.33 - 7.48	161-190	Double	59	1,500	83	2,100	38,080	17,000
ZCS3586	7.51 - 8.66	191-220	Double	59	1,500	83	2,100	38,080	17,000
ZCS3587	8.70 - 9.84	221-250	Double	59	1,500	83	2,100	38,080	17,000
ZCS3588	9.88 - 11.81	251-300	Double	79	2,000	106	2,700	38,080	17,000
LACE UP STANDARD GRIP - 316 STAINLESS STEEL									
ZCS1983	0.25 - 0.50	6-13	Single	9	230	12	305	1,344	610
ZCS1796	0.50 - 0.75	13-19	Single	14	355	17	430	1,792	810
ZCS1789	0.75 - 1.00	19-25	Single	16	405	20	510	4,480	2,030
ZCS1797	1.00 - 1.50	25-38	Single	18	455	24	610	6,272	2,845
ZCS1984	1.50 - 2.00	38-50	Double	21	535	29	735	8,960	4,065
ZCS2466	2.00 - 2.50	50-63	Double	24	610	34	865	8,960	4,065
ZCS0816	2.50 - 3.50	63-89	Double	27	685	39	990	10,752	4,875
ZCS5094	2.75 - 3.44	69-87	Multiple	55	1,390	81	2,063	40,000	17,857
ZCS1356	3.50 - 4.50	89-115	Double	27	685	39	990	12,544	5,690
ZCS2832	3.50 - 4.50	89-115	Triple	27	685	39	990	14,012	6,300
ZCS1355	4.50 - 5.50	115-140	Double	27	685	39	990	12,544	5,690
ZCS2833	4.50 - 5.50	115-140	Triple	27	685	39	990	16,128	7,315

Lace Up Cable Grip instructions

See page 55 of this catalog for detailed instructions for using Slingco Lace Up Grips. Also available as a PDF download at slingco.com/us/resources/manuals along with other useful resources, like our essential Cable Grip Inspection and Maintenance. This guide shows the proper usage, maintenance, and inspection of cable grips to ensure you achieve safe pulling operations, maximum grips strength, and grip longevity.



SPLICING GRIP - ROTATING BARREL



Slingco Rotating Barrel Swivel grips have a high capacity swivel that travels smoothly when being strung in straight line pulling.

Slingco Part No	Range		B Length		C Length		D Length		Approx. Break Load	
	in	mm	in	mm	in	mm	in	mm	lb	kg
ZCS3505	0.25 - 0.50	6-13	66.1	1,680	29.7	755	6.7	170	4,400	1,964
ZCS3506	0.50 - 1.00	13-25	87.8	2,230	40.0	1,015	7.9	200	7,400	3,304
ZCS3507	1.00 - 1.50	25-38	79.9	2,030	35.2	895	9.5	240	10,000	4,530
ZCS3508	1.50 - 2.00	38-51	72.0	1,830	31.3	795	9.5	240	12,000	5,357
ZCS3509	2.00 - 2.75	51-70	85.8	2,180	37.0	940	11.8	300	16,000	7,142
ZCS3510	2.75 - 3.50	70-90	107.5	2,730	47.0	1,195	13.3	340	20,000	8,928
ZCS3511	3.50 - 4.25	89-108	104.3	2,650	44.5	1,130	15.3	390	24,000	10,714



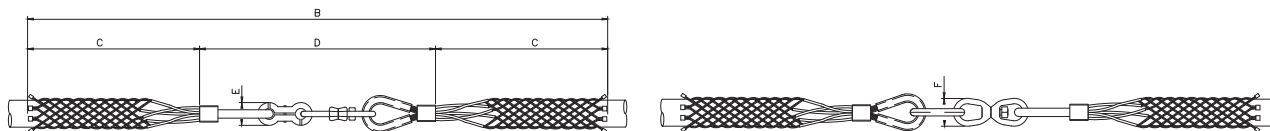
OPEN ENDED CABLE GRIP



Ideal for joining two cables to form a continuous loop. Typical application: replacement of lift cables, where the old cable would be attached to the new one, and the cable then fed around with ease. Also used to temporarily splice cable and conductor where torsion forces are NOT an issue. Torsion should be released prior to splicing. Where torsion is present a swivel and two grips should be used.

Slingco Part No	Range		Lattice Weave	Lattice Length		Approx. Break Load	
	in	mm		in	mm	lb	kg
OPEN ENDED STANDARD GRIP - GALVANIZED							
ZCS0313	0.25 - 0.50	6-13	Single	15	380	1,680	760
ZCS6420	0.25 - 0.50	6-13	Double	22	559	3,500	1,588
ZCS0314	0.50 - 0.75	13-19	Single	24	610	2,240	1,015
ZCS6421	0.50 - 0.75	13-19	Double	30	762	4,500	2,040
ZCS6425	0.50 - 0.75	13-19	Multi	70	1,779	7,500	3,400
ZCS0315	0.75 - 1.00	19-25	Single	28	710	5,600	2,540
ZCS6422	0.75 - 1.00	19-25	Triple	30	762	8,000	3,630
ZCS6426	0.75 - 1.00	19-25	Multi	80	2,032	11,800	5,352
ZCS0316	1.00 - 1.50	25-38	Single	32	815	7,840	3,555
ZCS6423	1.00 - 1.50	25-38	Double	36	915	10,000	4,537
ZCS6427	1.00 - 1.50	25-38	Multi	90	2,285	20,000	9,070
ZCS0317	1.50 - 2.00	38-50	Double	36	915	11,200	5,080
ZCS0318	2.00 - 2.50	50-63	Double	42	1,065	11,200	5,080
ZCS1158	2.50 - 3.50	63-89	Double	48	1,220	13,440	6,095
ZCS1159	3.50 - 4.50	89-115	Double	54	1,370	15,680	7,110
ZCS6424	4.25 - 4.88	108-124	Triple	55	1,400	19,500	8,847
ZCS1975	4.50 - 5.50	115-140	Double	54	1,370	15,680	7,110
OPEN ENDED STANDARD GRIP - 316 STAINLESS STEEL							
ZCS1995	0.25 - 0.50	6-13	Single	15	380	1,344	610
ZCS1996	0.50 - 0.75	13-19	Single	24	610	1,792	810
ZCS1997	0.75 - 1.00	19-25	Single	28	710	4,480	2,030
ZCS1998	1.00 - 1.50	25-38	Single	32	815	6,272	2,845
ZCS1999	1.50 - 2.00	38-50	Double	36	915	8,960	4,065
ZCS2000	2.00 - 2.50	50-63	Double	42	1,065	8,960	4,065
ZCS2001	2.50 - 3.50	63-89	Double	48	1,220	10,752	4,875
ZCS2002	3.50 - 4.50	89-115	Double	54	1,370	12,544	5,690
ZCS2003	4.50 - 5.50	115-140	Double	54	1,370	12,544	5,690

SPLICING GRIP - ROTATING SWIVEL LINK



Slingco Rotating Swivel Link Grips are perfect for stringing replacement wire and cable on equipment and in drilling or rigging systems. Not recommended for use in overhead stringing applications. Use the existing cable as a pull wire to string the replacement cable. These grips are available with differently sized grips for each side. Call for assistance in selecting the proper grip. Link opens for easy installation and adjustment. Made of Galvanized Steel.

Slingco Part No	Range		B Length		C Length		D Length		E Length		F Length		Approx. Break Load	
	in	mm	in	mm	in	mm	in	mm	in	mm	in	mm	lb	kg
ZCS3493	0.25 - 0.50	6-13	100.0	2,540	44.3	1,127	11.3	288	0.87	22	1.25	32	2,400	1,089
ZCS3494	0.50 - 1.00	13-25	103.8	2,641	46.0	1,170	11.8	301	1.38	35	1.25	32	3,526	1,599
ZCS3495	1.00 - 1.50	25-38	103.0	2,614	44.9	1,140	13.1	334	1.61	41	1.61	41	5,070	2,300
ZCS3496	1.50 - 2.00	38-51	101.0	2,573	43.7	1,110	13.9	353	1.61	41	2.0	51	8,000	3,629
ZCS3497	2.00 - 2.75	51-70	100.0	2,540	42.9	1,090	13.9	353	1.61	41	2.0	51	10,000	4,530
ZCS3498	2.75 - 3.50	70-90	118.0	3,013	52.3	1,330	13.9	353	1.61	41	2.0	51	10,000	4,530
ZCS3499	3.50 - 4.25	89-108	117.0	2,973	51.6	1,310	13.9	353	1.61	41	2.0	51	10,000	4,530

SUBSEA MARINE GRIPS FOR ARRAY, EXPORT, UMBILICAL AND SUBSEA CABLE INSTALLATIONS

High-volume project capacity, quick availability, full test reports and certification, and over 40 years experience



We offer extensive ranges of marine cable grips and hose restraint cable grips for applications including on-shore and off-shore cable installation, support of cables inside wind turbines and general cable management. We have also developed a range of cable pulling grips for use in the installation of inter-array and export cables from offshore wind farm installations.

- Single Eye, Double Eye, Lace Up Cable Grips
- Approx. Break Loads up to 12,000 lb.
- Galvanized, Stainless and Aramid Grips
- Complete range to suit Cable OD range 3" to 14" (10mm-350mm+)
- Test reports & certification
- Large project delivery
- Quick availability
- 40+ years' experience
- Award winning company





Slingco Part No. FLEX Eye	Slingco Part No. THIMBLE Eye	Range		Lattice Length		Approx. Break Load		Lattice Material
		in	mm	in	mm	lb	kg	
SINGLE EYE								
ZCS12740-2M	ZCS12740-THI-2M	3.5 - 5	90 - 125	78.75	2,000	110,230	50,000	Galv.
ZCS12740-2.5M	ZCS740-THI-2.5M	3.5 - 5	90 - 125	98.5	2,500	110,230	50,000	Galv.
ZCS12740-3M	ZCS12740-THI-3M	3.5 - 5	90 - 125	118	3,000	110,230	50,000	Galv.
ZCS3525	ZCS3525-THI	4 - 5	102 - 127	78.75	2,005	110,310	45,500	Galv.
ZCS12741-2.5M	ZCS12741-THI-2.5M	4.3 - 5.7	110 - 145	98.5	2,500	121,250	55,000	Galv.
ZCS12741-3M	ZCS12741-THI-3M	4.3 - 5.7	110 - 145	118	3,000	121,250	55,000	Galv.
ZCS3526	ZCS3526-THI	5 - 6	127 - 152	71.7	1,821	104,720	47,500	Galv.
ZCS12742	ZCS12742-THI	5.1 - 6.7	130 - 172	118	3,000	143,300	65,000	Galv.
ZCS3527	ZCS3527-THI	6 - 8	152 - 203	66	1,678	110,230	50,000	Galv.
ZCS12743	ZCS12743-THI	6.1 - 8.25	155 - 210	118	3,000	154,300	70,000	Galv.
ZCS12744	ZCS12744-THI	7.67 - 9.8	195 - 250	118	3,000	187,393	85,000	Galv.
ZCS3528	ZCS3528-THI	8 - 10	203 - 255	80.5	2,047	138,900	63,000	Galv.
ZCS12745	ZCS12745-THI	9.25 - 11.22	235 - 285	118	3,000	198,400	90,000	Galv.
ZCS3529	ZCS3529-THI	10 - 12	255 - 305	76.5	1,945	138,900	63,000	Galv.
ZCS3530	ZCS3530-THI	12 - 14	305 - 355	97	2,460	138,000	62,600	Galv.
DOUBLE EYE								
ZCS12754-2M	ZCS12754-THI-2M	3.5 - 5	90 - 125	78.75	2,000	121,250	55,000	Galv.
ZCS12754-2.5M	ZCS12754-THI-2.5M	3.5 - 5	90 - 125	98.5	2,500	121,250	55,000	Galv.
ZCS12754-3M	ZCS12754-THI-3M	3.5 - 5	90 - 125	118	3,000	121,250	55,000	Galv.
ZCS3535	ZCS3535-THI	4 - 5	102 - 127	78.75	2,005	124,560	56,500	Galv.
ZCS12755-2.5M	ZCS12755-THI-2.5M	4.3 - 5.7	110 - 145	98.5	2,500	132,275	60,000	Galv.
ZCS12755-3M	ZCS12755-THI-3M	4.3 - 5.7	110 - 145	118	3,000	132,275	60,000	Galv.
ZCS3536	ZCS3536-THI	5 - 6	127 - 152	71.7	1,821	124,560	56,500	Galv.
ZCS12756	ZCS12756-THI	5.1 - 6.7	130 - 172	118	3,000	165,350	75,000	Galv.
ZCS3537	ZCS3537-THI	6 - 8	152 - 203	64.3	1,633	126,765	57,500	Galv.
ZCS12757	ZCS12757-THI	6.1 - 8.25	155 - 210	118	3,000	176,370	80,000	Galv.
ZCS12758	ZCS12758-THI	7.67 - 9.8	195 - 250	118	3,000	198,400	90,000	Galv.
ZCS3538	ZCS3538-THI	8 - 10	203 - 255	80.5	2,047	156,528	71,000	Galv.
ZCS12759	ZCS12759-THI	9.25 - 11.22	235 - 285	118	3,000	209,439	95,000	Galv.
ZCS3539	ZCS3539-THI	10 - 12	255 - 305	76.5	1,945	156,528	71,000	Galv.
ZCS3540	ZCS3540-THI	12 - 14	305 - 355	97	2,460	156,528	71,000	Galv.
ZCS3540-3M	ZCS3540-THI-3M	12 - 14	305 - 355	118	3,000	156,528	71,000	Galv.
LACE UP								
ZCS12760	ZCS12760-THI	3.5 - 5	90 - 125	78.75	2,000	110,230	50,000	Galv.
ZCS3545	ZCS3545-THI	4 - 5	102 - 127	78.75	2,005	105,822	48,000	Galv.
ZCS12761	ZCS12761-THI	4.3 - 5.7	110 - 145	98.5	2,500	110,230	50,000	Galv.
ZCS3546	ZCS3546-THI	5 - 6	127 - 152	71.7	1,821	105,822	48,000	Galv.
ZCS12762	ZCS12762-THI	5.1 - 6.7	130 - 172	118	3,000	154,300	70,000	Galv.
ZCS3547	ZCS3547-THI	6 - 8	152 - 203	66	1,678	105,822	48,000	Galv.
ZCS12763	ZCS12763-THI	6.1 - 8.25	155 - 210	118	3,000	154,300	70,000	Galv.
ZCS12764	ZCS12764-THI	7.67 - 9.8	195 - 250	118	3,000	198,000	90,000	Galv.
ZCS3548		8 - 10	203 - 255	80.5	2,047	132,277	60,000	Galv.
	ZCS3548-THI	8 - 10	203 - 255	98.5	2,500	132,277	60,000	Galv.
ZCS12765	ZCS12765-THI	9.25 - 11.22	235 - 285	118	3,000	198,000	90,000	Galv.
ZCS3549		10 - 12	255 - 305	76.5	1,945	132,277	60,000	Galv.
	ZCS3549-THI	10 - 12	255 - 305	98.5	2,500	132,277	60,000	Galv.
ZCS3550	ZCS3550-THI	12 - 14	305 - 355	118.35	3,006	132,277	60,000	Galv.



STANDARD DUTY HOSE RESTRAINT SOCKS - DOUBLE EYE



Slingco offer a range of safety restraining grips and whip checks designed to prevent whipping in the event of a pressurized hose becoming detached from its fitting. Made from the highest grade galvanized steel and 316 stainless steel wire, and color coded for range identification, our grips are designed for various plant-critical applications across a wide range of commercial industries. Suitable for restraining all types of high pressure hoses such as water and air hoses, hydraulic hoses, concrete pump and delivery hoses as well as supporting electrical cabling within critical applications within mining, automation and other industrial sectors.



The grips are woven in such a way that the lattice or weave is uniform throughout its length, ensuring even load protection around the hose. This helps with any adverse abrasion to the hose and prevents displacement in the event of rupture. Available for 1/2" to 7" diameter hoses.

Slingco Part No.	Grip material	Thimble Eye	Thimble Size	Weave	Range		Eye length		Lattice/Weave		Overall length		Break load			Color Code
					mm	in	mm	in	mm	in	mm	in	kg	lb	kN	
ZCS14350	Galv	SS	6	Double	6-14	0.24-0.55	90	4	330	13	420	17	1600	3527	16	White
ZCS14351	Galv	SS	6	Double	14-20	0.55-0.80	90	4	352	14	442	17	2000	4409	20	White
ZCS14352	Galv	SS	6	Double	20-30	0.80-1.25	115	5	574	23	689	27	2500	5512	25	White
ZCS14353	Galv	SS	8	Double	30-40	1.25-1.50	165	6	810	32	975	38	4300	9480	42	Brown
ZCS14354	Galv	SS	8	Double	40-50	1.50-2.00	185	7	893	35	1078	42	6200	13669	61	Orange
ZCS14355	Galv	SS	10	Double	50-60	2.00-2.40	230	9	1215	48	1445	57	8100	17857	79	Yellow
ZCS14356	Galv	SS	10	Double	60-70	2.40-2.75	240	9	1224	48	1464	58	8100	17857	79	Blue
ZCS14357	Galv	SS	10	Double	70-90	2.75-3.50	260	10	1295	51	1555	61	8100	17857	79	Red
ZCS14358	Galv	SS	14	Double	90-110	3.50-4.30	280	11	1468	58	1748	69	10500	23148	103	Green
ZCS14359	Galv	SS	14	Double	110-130	4.30-5.00	350	14	1551	61	1901	75	12500	27558	123	Black
ZCS14360	Galv	SS	16	Double	120-150	4.70-5.90	400	16	1582	62	1982	78	16000	35274	157	Grey
ZCS14361	Galv	SS	16	Double	140-180	5.50-7.00	450	18	1533	60	1983	78	20000	44092	196	Light Blue
ZCS14362	SS	SS	6	Double	6-14	0.24-0.55	90	4	330	13	420	17	1280	2822	13	White
ZCS14363	SS	SS	6	Double	14-20	0.55-0.80	90	4	352	14	442	17	1600	3527	16	White
ZCS14364	SS	SS	6	Double	20-30	0.80-1.25	115	5	574	23	689	27	2000	4409	20	White
ZCS14365	SS	SS	8	Double	30-40	1.25-1.50	165	6	810	32	975	38	3440	7584	34	Brown
ZCS14366	SS	SS	8	Double	40-50	1.50-2.00	185	7	893	35	1078	42	4960	10935	49	Orange
ZCS14367	SS	SS	10	Double	50-60	2.00-2.40	230	9	1215	48	1445	57	6480	14286	64	Yellow
ZCS14368	SS	SS	10	Double	60-70	2.40-2.75	240	9	1224	48	1464	58	6480	14286	64	Blue
ZCS14369	SS	SS	10	Double	70-90	2.75-3.50	260	10	1295	51	1555	61	6480	14286	64	Red
ZCS14370	SS	SS	14	Double	90-110	3.50-4.30	280	11	1468	58	1748	69	8400	18519	82	Green

DE TYPE - DOUBLE EYE CABLE GRIP



Ideal for pulling light to medium loads; the main advantage over the single eye cable grip is the cable being pulled can be passed through the grip, several cable grips can be used to support over a calculated distance. Double Eye cable grips are excellent as hose restraints for lower psi-rated hoses. A thimble eye may be custom ordered with these grips.

Slingco Part No	Range		Lattice Weave	Lattice Length		Overall Length		Approx. Break Load	
	in	mm		in	mm	in	mm	lb	kg
DOUBLE EYE STANDARD GRIP - GALVANIZED									
ZCS0305	0.25 - 0.50	6-13	Single	9	230	12	305	1,680	760
ZCS0306	0.50 - 0.75	13-19	Single	14	355	17	430	2,240	1,015
ZCS0307	0.75 - 1.00	19-25	Single	16	405	20	510	5,600	2,540
ZCS0308	1.00 - 1.50	25-38	Single	18	455	24	610	7,840	3,555
ZCS0309	1.50 - 2.00	38-50	Double	21	535	29	735	11,200	5,080
ZCS0310	2.00 - 2.50	50-63	Double	24	610	34	865	11,200	5,080
ZCS0311	2.50 - 3.50	63-89	Double	27	685	39	990	13,440	6,095
ZCS0312	3.50 - 4.50	89-115	Double	27	685	39	990	15,680	7,110
ZCS0878	4.50 - 5.50	115-140	Double	27	685	39	990	15,680	7,110
DOUBLE EYE STANDARD GRIP - 316 STAINLESS STEEL									
ZCS0823	0.25 - 0.50	6-13	Single	9	230	12	305	1,344	610
ZCS1007	0.50 - 0.75	13-19	Single	14	355	17	430	1,792	810
ZCS0931	0.75 - 1.00	19-25	Single	16	405	20	510	4,480	2,030
ZCS1265	1.00 - 1.50	25-38	Single	18	455	24	610	6,272	2,845
ZCS3995	1.14 - 1.57	29-40	Double	50	1,270	62	1,575	35,000	15,625
ZCS1252	1.50 - 2.00	38-50	Double	21	535	29	735	8,960	4,065
ZCS0319	2.00 - 2.50	50-63	Double	24	610	34	865	8,960	4,065
ZCS0213	2.50 - 3.50	63-89	Double	27	685	39	990	10,752	4,875
ZCS0332	3.50 - 4.50	89-115	Double	27	685	39	990	12,544	5,690
ZCS1982	4.50 - 5.50	115-140	Double	27	685	39	990	12,544	5,690
ZCS4869	4.50 - 5.50	115-140	Double	70	1,778	80	2,032	13,500	6,027

HEAVY DUTY HOSE RESTRAINT SOCKS - DOUBLE EYE



Our heavy duty range of hose restraint socks can be used in areas where high break loading are required, mainly within highly critical environments. Available in our standard double format we also offer a range using a multi-weave option.

The socks are woven in such a way that the lattice or weave is uniform throughout its length ensuring even load protection around the hose. This helps with any adverse abrasion to the hose and prevents displacement in the event of rupture.

Available for - 1" to 7" diameter hoses.



Slingco Part No.	Eye Type	Range		Lattice Length		Lattice Weave	Approx. Break Load	
		in	mm	in	mm		lb	kg
DOUBLE THIMBLE EYE - GALVANIZED STEEL								
ZCS5363	Thimble eye	1.0 - 1.5	25 - 38	26	660	Double	11,000	4,911
ZCS5364	Thimble eye	1.5 - 2.5	38 - 63	40	1,016	Double	20,000	8,928
ZCS5365	Thimble eye	2.5 - 3.5	63 - 89	42	1,067	Double	22,000	9,821
ZCS5366	Thimble eye	3.5 - 4.5	89 - 114	44	1,118	Double	27,000	12,053
ZCS5367	Thimble eye	4.5 - 5.5	114 - 140	48	1,219	Double	31,000	13,839
ZCS6012	Thimble eye	5.5 - 7.0	140 - 180	60	1,524	Double	50,000	22,685
DOUBLE THIMBLE EYE - 316 STAINLESS STEEL								
ZCS5650	Thimble eye	1.0 - 1.5	25 - 38	26	660	Double	7,700	3,437
ZCS5651	Thimble eye	1.5 - 2.5	38 - 63	40	1,016	Double	14,000	6,250
ZCS5652	Thimble eye	2.5 - 3.5	63 - 89	42	1,067	Double	15,400	6,874
ZCS5653	Thimble eye	3.5 - 4.5	89 - 114	44	1,118	Double	18,900	8,437
ZCS5654	Thimble eye	4.5 - 5.5	114 - 140	48	1,219	Double	21,700	9,687
ZCS6000	Thimble eye	5.5 - 7.0	140 - 180	60	1,524	Double	35,000	15,880
DOUBLE THIMBLE EYE - GALVANIZED STEEL (LONG)								
ZCS3146	Thimble eye	0.59-0.79	15-20	49	1,250	Single	2,730	1,240
ZCS3148	Thimble eye	0.79-1.18	20-30	49	1,250	Double	4,380	1,990
ZCS3149	Thimble eye	1.18-1.57	20-30	49	1,250	Single	5,620	2,550
ZCS3150	Thimble eye	1.18-1.57	30-40	49	1,250	Double	6,740	3,060
ZCS3151	Thimble eye	1.57-1.97	40-50	59	1,500	Double	13,060	5,930
ZCS3152	Thimble eye	1.97-2.36	50-60	59	1,500	Double	14,610	6,630
ZCS3153	Thimble eye	2.36-2.76	60-70	59	1,500	Double	17,160	7,790
ZCS3154	Thimble eye	2.76-3.54	70-90	59	1,500	Double	17,870	8,110
ZCS3155	Thimble eye	3.54-4.33	90-110	59	1,500	Double	26,070	11,830
ZCS3156	Thimble eye	4.33-5.12	110-130	59	1,500	Double	26,070	11,830
ZCS3157	Thimble eye	4.72-5.91	120-150	59	1,500	Double	28,100	12,750
ZCS3158	Thimble eye	5.51-7.09	140-180	59	1,500	Double	28,100	12,750
DOUBLE EYE MULTIWEAVE - MAX STRENGTH - 316 STAINLESS STEEL								
ZCS3995	Thimble eye	1.14 - 1.57	29 - 40	50	1,270	Double	35,000	15,625
ZCS3295	Flex eye	2.75 - 3.44	70 - 87	58	1,460	Multiple	49,000	22,230
ZCS3254	Flex eye	3.00 - 3.50	76 - 89	58	1,460	Multiple	39,200	17,785
ZCS6004	Flex eye	3.50 - 4.75	89 - 120	58	1,460	Multiple	50,000	22,320



WHIP CHECK



The strong steel cable prevents hose-whip accidents in the event of hose or coupling failure. Easily fitted spring loaded loops grip the hose firmly.

Slingco Part No.	Material	Wire mm	Range		Length		Max WP PSI	WLL kN
			in	mm	in	mm		
WHIP CHECK - HOSE TO HOSE								
ZWR11530	Stainless Steel	3	0.5 - 1.25	13 - 32	22	550	200	5.7
ZWR11534	Galvanised	3	0.5 - 1.25	13 - 32	22	550	200	5.7
ZWR11535	Galvanised	6	1.5 - 3	38 - 76	42	1,060	200	21.2
ZWR14271	Galvanised	3.5	0.375 - 1.25	10 - 32	22	550	200	6.5
ZWR14272	Galvanised	6	1.25 - 2	32 - 50	33	850	200	17.6
ZWR14273	Galvanised	6	2.5 - 4	63 - 100	45	1,150	200	17.6

SLINGCO NON-METALLIC ARAMID CABLE GRIPS

FOR PULLING CABLE IN MANY INDUSTRIAL & COMMERCIAL PROJECTS



Slingco's Non-Metallic Aramid Cable Grip Features:

- Break loads similar to steel cable grips
- Lightweight
- No more frayed grip wires
- UV Resistant and strong enough to last in salt water, pollutants, and underground
- We can create custom grips to meet your specifications

Slingco's line of Non-Metallic Aramid Cable Grips are ideal for use in fiber optic cable installation operations, offshore applications, or for a multitude of uses in the utilities industry.

These grips are made of a high-strength, non-metallic aramid fiber, with UV protective coating, and now feature an improved weight to break ratio. They are suitable for pulling both single cable and multiple cable bundles.

Thanks to the non-metallic material, these grips are easy to work with even without gloves. The woven mesh material also offers

a non-metallic, non-conductive alternative to steel grips.

We have many different styles of Non-Metallic Aramid Cable Grips for your project, such as Single Eye, Double Eye, Offset Eye, Lace Up, Mining Grips, and our new Single Eye Double Weave Grips made of ultra flex aramid material. We can also work with you to customize an Aramid Cable Grip to match any particular project specifications.

Call your Slingco Account Manager today and they will help you select the right grip for your project!

NS TYPE - SINGLE EYE ARAMID CABLE GRIP



Single Eye Single Weave Non-Metallic Cable Grip



Single Eye Double Weave Non-Metallic Cable Grip

Slingco Part No	Range		Lattice Length		Approx. Break Load	
	in	mm	in	mm	lb	kg
SINGLE EYE DOUBLE WEAVE HIGH STRENGTH NON-METALLIC GRIP						
ZCS13054	4.00 - 5.00	101.6 - 127	118	2997	45,500	20,638
SINGLE EYE SINGLE WEAVE NON-METALLIC CABLE GRIP						
ZCS1040	0.38 - 0.75	10 - 20	22	552	2,460	1,115
ZCS1022	0.75 - 1.25	20 - 30	21	523	3,580	1,620
ZCS2923	1.00 - 1.50	25 - 36	23	573	3,580	1,620
ZCS1041	1.25 - 1.50	30 - 40	25	642	4,920	2,230
ZCS1042	1.50 - 2.00	40 - 50	19	485	5,820	2,640
SINGLE EYE DOUBLE WEAVE NON-METALLIC CABLE GRIP						
ZCS1023	1.25 - 1.50	30 - 40	25	642	9,860	4,470
ZCS1024	1.50 - 2.00	40 - 50	21	523	11,880	5,390
ZCS1179	2.00 - 2.50	50 - 65	25	636	15,900	7,210
ZCS1180	2.50 - 3.00	65 - 76	36	908	15,900	7,210
ZCS1181	3.00 - 4.00	76 - 100	24	1,029	15,900	7,210
Slingco Part No	Range		Color code	Approx. Break Load		
	in	mm		lb	kg	
ULTRA-FLEX SINGLE EYE DOUBLE WEAVE NON-METALLIC CABLE GRIP						
ZCS09336	0.63 - 0.75	16 - 19	Yellow	5,000	2,267	
ZCS09337	0.75 - 1.00	19 - 25	Red	6,000	2,721	
ZCS09338	1.00 - 1.25	25 - 32	Blue	6,000	2,721	
ZCS09339	1.25 - 1.50	32 - 38	White	6,000	2,721	

Slingco Double Eye non-metallic aramid grips are perfect for supporting power cables in salt water and wastewater applications. These grips are highly resistant to corrosion and salt.

ND TYPE - DOUBLE EYE ARAMID CABLE GRIP



Slingco Part No	Range		Lattice Length		Approx. Break Load	
	in	mm	in	mm	lb	kg
DOUBLE EYE SINGLE WEAVE NON-METALLIC GRIP						
ZCS1148	0.38 - 0.75	10 - 20	22	552	2,460	1,115
ZCS1176	0.75 - 1.25	20 - 30	21	523	3,580	1,620
ZCS2922	1.00 - 1.50	25 - 38	23	573	3,580	1,620
ZCS1177	1.25 - 1.50	30 - 40	25	642	4,920	2,230
ZCS1178	1.50 - 2.00	40 - 50	19	487	5,820	2,640
DOUBLE EYE DOUBLE WEAVE NON-METALLIC GRIP						
ZCS1182	1.25 - 1.50	30 - 40	25	642	9,860	4,472
ZCS1183	1.50 - 2.00	40 - 50	26	667	11,880	5,389
ZCS1184	2.00 - 2.50	50 - 65	25	636	15,900	7,212
ZCS1185	2.50 - 3.00	65 - 76	30	762	15,900	7,212
ZCS1186	3.00 - 4.00	76 - 102	32	800	15,900	7,212
ZCS3813	4.00 - 5.00	102 - 127	61	1,540	15,900	7,212

NO TYPE - OFFSET EYE ARAMID CABLE GRIP



Single Offset Eye Single Weave Non-Metallic Grip

Slingco Part No	Range		Lattice Length		Approx. Break Load	
	in	mm	in	mm	lb	kg
SINGLE OFFSET EYE SINGLE WEAVE NON-METALLIC GRIP						
ZCS2810	0.38 - 0.75	10 - 20	21	535	2,460	1,115
ZCS2811	0.75 - 1.25	20 - 30	21	535	3,580	1,620
ZCS2921	1.00 - 1.50	25 - 40	23	584	3,580	1,620
ZCS2812	1.25 - 1.50	30 - 40	25	635	4,920	2,230
ZCS2813	1.50 - 2.00	40 - 50	21	535	5,820	2,640
SINGLE OFFSET EYE DOUBLE WEAVE NON-METALLIC GRIP						
ZCS09342	0.50 - 1.00	13 - 25	39	990	8,093	3,671
ZCS2814	1.25 - 1.50	30 - 40	34	864	9,860	4,470
ZCS2815	1.50 - 2.00	40 - 50	25	635	11,880	5,390
ZCS2816	2.00 - 2.50	50 - 65	25	635	15,900	7,210
ZCS2817	2.50 - 3.00	65 - 76	26	667	15,900	7,210
ZCS2818	3.00 - 4.00	76 - 102	34	864	15,900	7,210
SINGLE OFFSET EYE EXTENDED EYE 12" NON-METALLIC GRIP						
ZCS7053	0.50 - 0.63	13 - 16	24	610	800	363
ZCS7054	0.63 - 0.74	16 - 19	24	610	1,000	454
ZCS7055	0.75 - 1.00	19 - 25	24	610	1,200	544
ZCS7056	1.00 - 1.25	25 - 32	24	610	1,200	544
SINGLE OFFSET EYE LACE UP NON-METALLIC CABLE GRIP						
ZCS09342	0.50 - 1.00	13 - 25	39	990	8,093	3670
ZCS09323	0.63 - 1.00	16 - 25	59	1498	13,000	5896
ZCS10476	3.00 - 5.00	76 - 127	30	762	5,000	2267
DOUBLE OFFSET EYE NON-METALLIC CABLE GRIP						
ZCS8176	2.50 - 3.00	65 - 76	39	990	8,000	3,629
ZCS09959	2.50 - 3.50	65 - 89	36	914	9,000	4,083
ZCS6823	3.00 - 4.00	76 - 102	33	838	9,000	4,082



Single Offset Eye Lace Up Non-Metallic Cable Grip

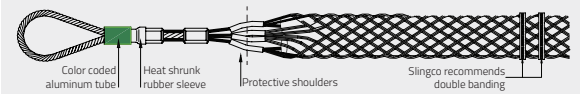


Double Offset Eye Non-Metallic Cable Grip



TOOLS, BUCKLES AND BANDS FOR QUICK AND EFFICIENT BANDING OF CABLE GRIPS, HOSES AND MORE

Note: Slingco recommends double banding the ends of cable grips.



FAST BANDING: Pre-Looped Bands for quickly securing grips and other simple banding applications



CPC2875

Use pre-looped punch style bands to quickly and securely band cable grips, hoses or other cylindrical items.

The bands are pre-looped through the buckle to slide over the end of the item being banded. Just tighten the band using the Slingco Punch Banding Tool then, when the band is tight, just punch the head of the tool and snip off the extra banding. Simple!

Banding tool					
Description					Slingco part no.
Standard punch-style banding tool.					CPC2875
Bands Pre-Looped					
Width	Thickness	Loop diameter	Pack quantity	Slingco part no.	
3/8"	0.025"	13/16"	100/box	CPC2876	
5/8"	0.030"	1"	100/box	CPC2880	
5/8"	0.030"	1.5"	100/box	CPC2879	
5/8"	0.030"	2.0"	100/box	CPC2878	
5/8"	0.030"	2.5"	50/box	CPC2877	
5/8"	0.030"	3.0"	50/box	CPC8532	
Open End Band – 201 SS					
Width	Thickness	Length	Loop diameter	Pack quantity	Slingco part no.
5/8"	0.030"	24"	6" Single Wrap 3" Double Wrap	50/box	CPC08596

The sizes opposite refer to the inner loop diameter of the band. Select the size that will comfortably fit over the item being banded.

Open End Band – non pre-looped 201 SS 5/8" wide band with attached buckle. Includes punch style buckle. Use as single loop for larger diameter or double looped for smaller diameters and added strength. Maximum diameter for single or double loops is listed.

LIGHT DUTY BANDING: Utility Pole and other Light Duty Pole Banding applications



CPC8748

Use Slingco 3/4" wide 201 Stainless Steel, or the 1/2" wide 316 Stainless Steel, banding system to secure cables and other items to Utility poles, Light stands or other structures. The Light Duty Banding Tool allows you to easily tighten and secure any length band loop.

Slingco offers rolls of 3/4" and 1/2" wide banding material in 100 foot lengths. These 100 foot band rolls come in two convenient packages –

Banding tool					
Description					Slingco part no.
Operates on band widths 3/8" to 3/4" and thickness up to 0.030". Tool has a built in cutter with PVC coated handle for comfort and sliding block assembly with spring loaded lever.					CPC8748
Bands					
Width	Thickness	Avg break strength	Pack quantity	Weight	Slingco part no.
3/4"	0.030"	2250 lb	100' roll - Cardboard Box	7.7 lb	CPC8743
3/4"	0.030"	2250 lb	100' roll - Red Plastic Tote	7.7 lb	CPC8744
1/2"	0.030"	1200 lb	100' roll - Cardboard Box	5.1 lb	CPC08325
1/2"	0.030"	1200 lb	100' roll - Blue Plastic Tote	5.9 lb	CPC08326
Buckles					
Width	Pack quantity	Weight		Slingco part no.	
3/4"	100/Box	3.7 lb		CPC8746	
1/2"	100/Box	2.5 lb		CPC08327	

standard stack-and-store cardboard packaging, or an easy to carry red plastic tote for the 3/4" and a blue plastic tote for the 1/2".

The buckles used to secure these bands are made of 201 Stainless Steel and designed for 3/4" width bands, and 316 Stainless Steel designed for 1/2" bands.



HEAVY DUTY BANDING: Utility Pole and other Heavy Duty banding applications



CPC8780

Use the Slingco 1-1/4" 201 Stainless Steel Banding system to secure cables and other items to structures and poles where extra strength hold is required. The Heavy Duty Banding Tool allows you to easily tighten and secure any length band loop.

Perfect for use with concrete utility poles. The extra width of this band provides stronger tensile strength than the 3/4" band as well

Banding tool					
Description					Slingco part no.
Operates on bands widths 3/4", 1", and 1-1/4" and thickness of 0.044". Featuring a built-in cutter and a sliding block assembly.					CPC8780
Bands					
Width	Thickness	Average break strength	Pack quantity	Weight	Slingco part no.
1-1/4"	0.044"	5500 lb	100' roll in CARDBOARD BOX PACKAGING	17.2 lb	CPC8745
Buckles					
Width	Pack quantity		Weight	Slingco part no.	
1-1/4"	25/Box		3.2 lb	CPC8747	

as a wider holding surface. Useful in many application environments including Utility, Marine and manufacturing where securely attaching cables, hoses or tubes onto a cylindrical object is needed. 100 ft. band roll comes in easy to stack and store cardboard box.

Giant buckles are made of 201 Stainless Steel and designed for use with 1-1/4" wide bands.

POLE BAND SYSTEM



The Slingco Pole Band System includes bolt clamps and mounting plates and 3/4" or 1-1/4" banding. Packages with different band lengths make this system flexible for varying pole sizes. Just measure the circumference of the pole and add a minimum of 6" and select the next size up. Securely mount hardware to cylindrical or square wooden, metal or concrete poles.

The system includes aluminum hardware extrusions, bolt hardware and pre-cut lengths of stainless steel banding. The system is easy to attach and tighten onto poles. The optional mounting plates allow quick attachment of hardware.

Extrusions and mounting plates available separately for use with rolls of banding cut to length in the field.



Slingco Part No.	Description	Pack Quantity	Pre-Cut Band Length		Band Width	
			in	mm	in	mm
PRE-ASSEMBLED EXTRUSIONS AND BANDING						
ZPC10646-48	Two extrusions and pre-cut band	12	48	1,219	0.75	19
ZPC10646-72	Two extrusions and pre-cut band	12	72	1,829	0.75	19
ZPC10647-48	Two extrusions and pre-cut band	12	48	1,219	1.25	31.75
ZPC10647-72	Two extrusions and pre-cut band	12	72	1,829	1.25	31.75
BOLT CLAMPS AND MOUNTING PLATES						
ZPC10646	0.75" (19 mm) Bolt Clamp	12	N/A	N/A	0.75	19
ZPC10647	1.25" (31.75 mm) Bolt Clamp	12	N/A	N/A	1.25	31.75
ZPC10648	Mounting Plate with 2" (50.8 mm) Bolt	12	N/A	N/A	0.75 or 1.25	19 or 31.75
ZPC10910	Mounting Plate with 3" (76.2 mm) Bolt	12	N/A	N/A	0.75 or 1.25	19 or 31.75
Slingco Part No.	Description	Pack Quantity	Pre-Cut Band Length		Band Width	
			in	mm	in	mm
BANDING (100 FT ROLLS)						
CPC8743	201 SS banding	100 ft in BOX	N/A	N/A	0.75	19
CPC8744	201 SS banding	100 ft in PLASTIC TOTE	N/A	N/A	0.75	19
CPC8745	201 SS banding	100 ft in BOX	N/A	N/A	1.25	31.75

GUY WIRE DISPENSER



Slingco's Guy Wire Dispenser saves linemen time, effort, and keeps them safe. Efficiently dispense and take up excess guy wire from a permanently mounted source. Operation of the dispenser is kept smooth thanks to the high load sealed ball bearing. The Guy Wire Dispenser is constructed of high strength steel coated in a durable black and yellow finish to enable the unit to endure the harsh outdoor environment. Easy to operate release knobs allow for quick and easy loading and unloading.

- Handles Guy Wire OD up to 1/2"
- Permanently mounts to truck or other surface
- Smooth pay-out operation thanks to high load sealed bearings

Slingco Part No.	Max. Wire Size		Coil Width Capacity		Coil Diameter Range		Weight	
	in	mm	in	mm	in	mm	lb	kg
ZWM09207	0.5	12.7	4.75	120	22-31	559-787	45	20.5
ZWM12496	0.5	12.7	8.75	222.25	32 - 36	813-914	54	24.49

Slingco Part No.	Description
ZWM09741	Guy Wire Knob Replacement Kit - contains all parts needed to replace securement knobs.

TRIPLEX DISPENSER



The Slingco Triplex dispenser is designed to be permanently mounted for the efficient dispensing of triplex. Slingco's triplex dispenser is designed to keep linemen safe while saving time and effort.

Constructed of high strength steel coated in a durable black and yellow finish allows the unit to endure the harsh outdoor environments. The high load sealed ball bearing keeps operation and rotation smooth.

Easily adjust break tension with a 3/4" wrench. Simple pull knob operation for loading of triplex coils.

Slingco Part No.	Coil OUTSIDE Diameter Range		Coil INSIDE Diameter Range		Coil Width Capacity		Weight	
	in	mm	in	cm	in	cm	lb	kg
ZWM09903	26 - 32	66 - 81.3	14 - 20	35.5 - 50.8	10.25	26	54	24.5
ZWM12698	Repair Kit - contains parts needed to replace securement knobs							

JIB HEAD ADAPTER



- For mounting jib head attachments and assemblies
- Manufactured from zinc plated steel
- Supplied with machined pin and lanyard

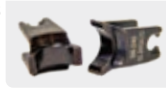
Slingco Part No.	Dimensions (Square ID)		Type
	in	mm	
ZWH10911	4.1 x 4.1	104.1 x 104.1	Square to Round Adapter

MECHANICAL CRIMPING TOOL



Slingco Part No.	Tool Type	Crimp Force		Length		Weight	
		lb	kg	in	mm	lb	kg
TCR7002	O&D	9,000	4,082.33	25.75	65.4	7	3.175
TCR7004	BG&D	9,000	4,082.33	25.75	65.4	7	3.175
TCR08735	5/8 Nose Die & Kearney Seat (Accepts 'Kearney' type)	9,000	4,082.33	25.75	65.4	7	3.175

Slingco W-Die Sets (D3 Insert)



Slingco Part No.	Slingco Ref.	Burndy Equiv.
TCR7020	S6-K840	WK840
TCR7021	S6-BG	WBG
TCR7022	S6-O	WO
TCR7023	S6-247	W247
TCR7024	S6-249	W249
TCR7025	S6-121	W121
TCR7027	S6-163	W163
TCR7028	S6-164	W164
TCR7029	S6-165	W165
TCR7030	S6-166	W166
TCR7031	S6-167	W167
TCR7034	S6-237	W237
TCR7036	S6-239	W239
TCR7037	S6-241	W241
TCR7038	S6-243	W243
TCR7039	S6-245	W245
TCR7047	S6-C	WC
TCR7058	S6-25RT	W25RT
TCR7059	S6-26RT	W26RT

Slingco O-Die Sets (Kearney Seat)



Slingco Part No.	Slingco Ref.	Burndy Equiv.
TCR10117	O Die - 1/2	1/2
TCR10118	O Die - 1/4	1/4
TCR10119	O Die - 3/8	3/8
TCR10120	O Die - 5/8-1	5/8-1
TCR10121	O Die - 5/16	5/16
TCR10122	O Die - 9/16	9/16
TCR10123	O Die - 11/16	11/16
TCR10124	O Die - 19/32	19/32
TCR10125	O Die - 620	620
TCR10126	O Die - 635	635
TCR10127	O Die - 747	747
TCR10128	O Die - 781	781
TCR10129	O Die - 840	840
TCR10130	O Die - 845	845
TCR10131	O Die - B	B
TCR10132	O Die - 3/16	3/16
TCR10133	O Die - T	T
TCR10134	O Die - D	D
TCR10135	O Die - J	J
TCR10136	O Die - K	K
TCR10137	O Die - O	O
TCR10138	O Die - P	P
TCR10139	O Die - 737	737

Slingco's Mechanical Crimping Tools have been created to complete the variety of utility distribution service connections that need to be made on the line, pole, and home. Our crimping tools have been designed to provide reliable crimps installing full-tension or non-tension connectors.

Slingco's Mechanical Crimping Tool's 'D3' groove allows 'W' style die inserts for installing taps, splices, and terminal connectors. The 'W' die inserts lock securely and easily into place with the positive lock, spring-loaded die buttons. Slingco also offers a Mechanical Crimping Tool that accepts Kearney type dies. Our Mechanical Crimping Tools also have ergonomic handles for comfortable use and maximum leverage when making critical connections.

12 TON WH2/WH3 KEARNEY TYPE DIES



Replacement dies for WH-2/WH-3 (10.7/12T) type crimp tools. Slingco replacement WH dies work in manual or battery powered tools. These WH-2/WH-3 dies are Kearney Seat dies.

Slingco Part No.	Slingco Ref.	Kearney Die Size
TCR09864	WH2/WH3 Die - BKT	BKT
TCR09865	WH2/WH3 Die - C	C
TCR09866	WH2/WH3 Die - D	D
TCR09867	WH2/WH3 Die - N	N
TCR09868	WH2/WH3 Die - O	O
TCR09869	WH2/WH3 Die - P	P
TCR09870	WH2/WH3 Die - U	U
TCR09871	WH2/WH3 Die - 510	510
TCR09873	WH2/WH3 Die - 635	635
TCR09874	WH2/WH3 Die - 727	727
TCR09875	WH2/WH3 Die - 737	737
TCR09876	WH2/WH3 Die - 747	747

Slingco Part No.	Slingco Ref.	Kearney Die Size
TCR09877	WH2/WH3 Die - 781	781
TCR09878	WH2/WH3 Die - 840	840
TCR09880	WH2/WH3 Die - 5/16	5/16
TCR09882	WH2/WH3 Die - 1/2	1/2
TCR09883	WH2/WH3 Die - 9/16	9/16
TCR09885	WH2/WH3 Die - 5/8	5/8
TCR09887	WH2/WH3 Die - 15/16	15/16
TCR09890	WH2/WH3 Die - 15/16H	15/16H
TCR09892	WH2/WH3 Die - 1-1/8-1	1-1/8-1
TCR09893	WH2/WH3 Die - 1-1/8-2	1-1/8-2
TCR09895	WH2/WH3 Die - 1-1/2H	1-1/2H
TCR09896	WH2/WH3 Die - 840H Wide	840H Wide

RATCHET CUTTERS



The Slingco ACSR and CU-AL Ratchet cutters are designed to cut hard cables and copper cables cleanly and smoothly. The ratchet design provides leverage, increasing cutting force with each open and close of the handles. Makes cutting cable easier compared to manual cutters.

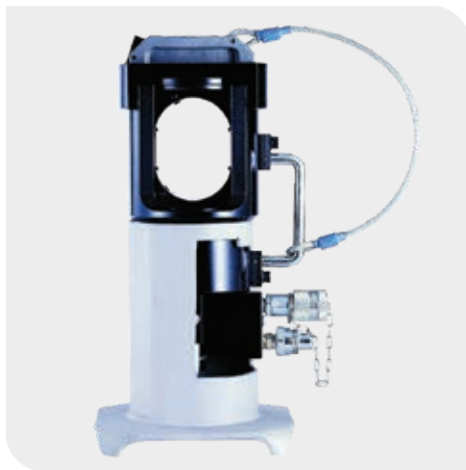
- For cutting ACSR cable
- Smooth ratchet operation
- Cuts up to 954 ACSR and other hard cable cleanly

The handles surfaces are designed to allow a firm, secure grip. The ratcheting action makes these cutters easy to operate even in limited spaces with just moderate pressure.

Do not use on energized lines.

Slingco Part No.	Description	For cutting	Length in (mm)	Weight lb (kg)
TCU09280	Hard Cable (ACSR) Ratchet Cutter	ACSR	30 (762)	12 lb (5.44)
TCU09281	CU - AL Ratchet Cutter	CU & AL	30 (762)	12 lb (5.44)

60 TON HYDRAULIC CRIMPING TOOL



Slingco's Hydraulic Crimping Tools are designed to crimp sleeves and lugs on ACSR and ACAR transmission & distribution cables using dies that meet the standards of the utility industry. Our crimping tools are ideal for use in constructing substations and transmission lines.

- Accepts Slingco, Burndy L and Alcoa 6000 Series dies
- Steel Carrying Case Includes Ground Stand
- Lifting eye for hoist work
- For Crimping ACSR and ACAR transmission and distribution cables

The Single-Acting Crimping Tool uses hydraulic pressure to advance the ram into position, and an internal spring to return the ram to the original position. The Double-Acting Crimping Tool advances and returns the ram using hydraulic pressure alone, eliminating the possibility of the ram sticking or becoming jammed.

Our Hydraulic Crimping Tools come in a steel carrying case, and are lightweight and portable. Our crimping tools accept Slingco S60 Dies, or any shell-type dies used with Alcoa or Burndy 60-ton crimping tools.

Slingco Part No	Crimping Force	Operating Pressure	Action	Tool Weight	Oil Required
TCR7003	60 Tons	10,000 psi (700 bar)	Single-Action	47 lb	308 cc
TCR7018	60 Tons	10,000 psi (700 bar)	Double-Action	51 lb	314 cc

Replacement Dies for 60-Ton Hydraulic Crimping Tools



Slingco Part No.	Slingco Ref.	Alcoa Equivalent
TCR7067	S60-10SH	6010SH
TCR7068	S60-12SH	6012SH
TCR7069	S60-14SH	6014SH
TCR7070	S60-16SH	6016SH
TCR7071	S60-18SH	6018SH
TCR7072	S60-20SH	6020SH
TCR7073	S60-74SH	6074SH
TCR7074	S60-75SH	6075SH
TCR7075	S60-76SH	6076SH
TCR7076	S60-20AH	6020AH
TCR7077	S60-24AH	6024AH
TCR7078	S60-27AH	6027AH
TCR7079	S60-30AH	6030AH
TCR7080	S60-34AH	6034AH
TCR7081	S60-36AH	6036AH
TCR7082	S60-38AH	6038AH

Slingco Part No.	Slingco Ref.	Alcoa Equivalent
TCR7083	S60-40AH	6040AH
TCR7084	S60-74AH	6074AH
TCR7085	S60-75AH	6075AH
TCR7086	S60-76AH	6076AH
TCR7087	S60-07CD	6007CD
TCR7088	S60-08CD	6008CD
TCR7089	S60-09CD	6009CD
TCR7090	S60-10CD	6010CD
TCR7091	S60-11CD	6011CD
TCR7092	S60-12CD	6012CD
TCR7093	S60-13CD	6013CD
TCR7094	S60-14CD	6014CD
TCR7095	S60-15CD	6015CD
TCR7096	S60-16CD	6016CD
TCR7097	S60-17CD	6017CD

Repair kits

Slingco Part No.	Description	For Crimper No.
TCR09048	Seal Kit	TCR7003 60 Ton Single Action
TCR09937	Detent Kit	TCR7003 60 Ton Single Action
TCR10356	Seal Kit	TCR7018 60 Ton Double Action
TCR09937	Detent Kit	TCR7018 60 Ton Double Action
TCR09917	Seal Kit	TCR08490 100 Ton
TCR09926	Detent Kit	TCR08490 100 Ton

100 TON HYDRAULIC CRIMPING TOOL



Slingco's 100 Ton Hydraulic Crimping Tool is ideal for use in constructing substations and transmission lines. This tool is designed to crimp sleeves and lugs on ACSR and ACAR transmission cables using dies that meet the standards of the utility industry.

- Accepts U or shell type dies
- Steel Carrying Case
- Large handles for easy carrying
- Easy die installation

The TCR0849 comes in a single-action configuration but can be converted to double-action functionality.

Crimping Range

- Copper: Up to 2.5" OD Sleeve
- Aluminum: Up to 3" OD Sleeve
- Steel: Up to 1.25" OD Sleeve

Comes with steel carrying case.

Slingco Part No	Crimping Force	Operating Pressure	Action	Tool Weight	Oil Required
TCR08490	100 Tons	10,000 psi (700 bar)	Single-Action	78 lb	422 cc

Replacement Dies for 100-Ton Hydraulic Crimping Tools



Slingco Part No.	Slingco Ref.	Alcoa Equivalent
TCR08544	S100-10SH	10010SH
TCR08545	S100-12SH	10012SH
TCR08546	S100-14SH	10014SH
TCR08547	S100-16SH	10016SH
TCR08548	S100-18SH	10018SH
TCR08549	S100-20SH	10020SH
TCR08550	S100-24SH	10024SH
TCR08551	S100-28SH	10028SH
TCR08552	S100-32SH	10032SH
TCR08553	S100-36SH	10036SH
TCR08554	S100-40SH	10040SH
TCR08555	S100-44SH	10044SH
TCR08556	S100-48SH	10048SH
TCR08557	S100-52SH	10052SH
TCR08558	S100-56SH	10056SH
TCR08559	S100-60SH	10060SH
TCR08560	S100-64SH	10064SH
TCR08561	S100-68SH	10068SH
TCR08562	S100-72SH	10072SH

Slingco Part No.	Slingco Ref.	Alcoa Equivalent
TCR08563	S100-42AH	10042AH
TCR08564	S100-44AH	10044AH
TCR08565	S100-46AH	10046AH
TCR08566	S100-48AH	10048AH
TCR08567	S100-07CD	10007CD
TCR08568	S100-08CD	10008CD
TCR08569	S100-09CD	10009CD
TCR08570	S100-10CD	10010CD
TCR08571	S100-11CD	10011CD
TCR08572	S100-12CD	10012CD
TCR08573	S100-13CD	10013CD
TCR08574	S100-14CD	10014CD
TCR08575	S100-15CD	10015CD
TCR08576	S100-16CD	10016CD
TCR08577	S100-17CD	10017CD
TCR08578	S100-18CD	10018CD
TCR08579	S100-19CD	10019CD
TCR08580	S100-20CD	10020CD

Repair kits

Slingco Part No.	Description	For Crimper No.
TCR09048	Seal Kit	TCR7003 60 Ton Single Action
TCR09937	Detent Kit	TCR7003 60 Ton Single Action
TCR10356	Seal Kit	TCR7018 60 Ton Double Action
TCR09937	Detent Kit	TCR7018 60 Ton Double Action
TCR09917	Seal Kit	TCR08490 100 Ton
TCR09926	Detent Kit	TCR08490 100 Ton



CAN'T FIND THE SPECIFICATION YOU NEED?
 Call or email for full ranges plus custom manufacture options

888 685 9478
 sales@slingco.com

10K DRIVE WRENCH ASSEMBLY

EFFICIENT INSTALLATION OF SCREW ANCHORS

Drive Wrench System for installation of screw anchors. Component and options include:

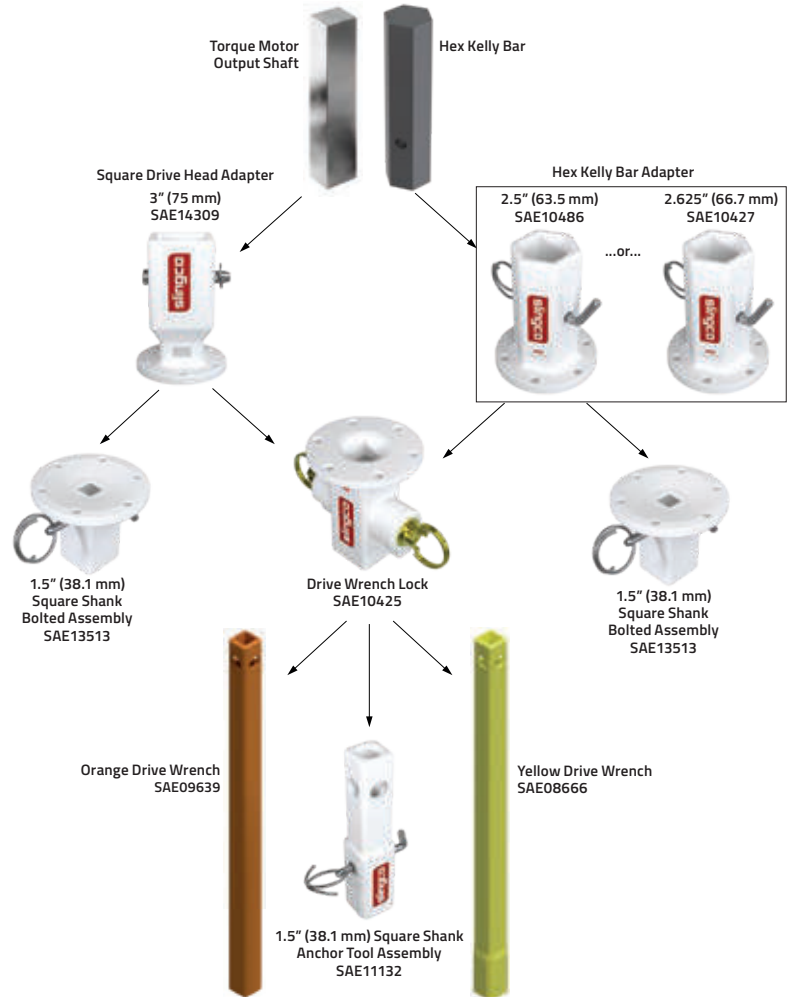
- Orange Drive Wrench (#SAE09639)
- Yellow Drive Wrench (#SAE08666)
- Square Shank Anchor Tool (#SAE11132)
- Drive Wrench Lock (#SAE10425)
- 2.5 in Hex Kelly Bar Adapter (#SAE10486)
- 2.625 in Hex Kelly Bar Adapter (#SAE10427)
- 1.5 in Square Shank Bolted Assembly (#SAE13513)

Slingco's 10k Drive Wrench Assembly is a tool system for the installation of screw anchors.

Designed to connect the square anchor of a drive motor or screw anchor to the hexagonal Kelly Bar of a bucket truck. System options include Drive Wrenches to suit different sized anchor rods; a Drive Wrench lock; two Kelly Bar Adapters to fit the most common drive bar dimensions (2.5 in and 2.625 in) and square shank adapter and tool assembly.

The Drive Wrench Lock attaches to the Kelly Bar Adapter and makes the installation of the Anchor Rod much easier. The three position rings of the lock assembly ensure easy capture of the Drive Wrench and Anchor Rod, holding them securely while under torque and releasing them when needed.

The Drive Wrenches are designed to allow Anchor Rods to telescope inside, and secure to, the Drive Wrench Lock. The Drive Wrench transfers the torque from the Drive motor to the Screw Anchor, and are rated to 10,000 ft-lb.



HEX KELLY BAR ADAPTERS



Slingco's Hex Kelly Bar Adapters are a key component in the Drive Wrench Assembly. The adapters are used to connect the Drive Wrench Lock Assembly to the Kelly Bar of the bucket truck. There are two versions available which fit the most common drive bar dimensions.

Slingco Part No.	Kelly Bar Shape	Adapter dimensions						Weight each	
		X		Y		Z		lb	kg
SAE10486	HEX	2.5	63.5	4.25	108	8.25	210	16.3	7.39
SAE10427	HEX	2.625	66.7	4.25	108	8.25	210	16.7	7.57

DRIVE WRENCH LOCK ASSEMBLY



Slingco's Drive Wrench Lock Assembly attaches to the adapter and makes the installation of the anchor rod much easier. The three-position rings allow for easy capture of the Drive Wrench and the anchor rod, holding them securely while under torque, and releasing each when needed.

Slingco Part No.	Description	Weight	
		lb	kg
SAE10425	Drive Lock Assembly	18.4	8.35
SAE13513	1-1/2" Square Shank Bolted Assembly	12.3	5.58

DRIVE WRENCHES



Slingco's Drive Wrenches are designed to allow anchor rods to telescope inside them, and securing to the Drive Wrench Lock Assembly. The Drive Wrench transfers the torque from the drive motor to the screw anchor.

Rated to 10,000 ft-lb of torque, Slingco's Drive Wrenches are tough and can handle anchor installs in tough environments.

Slingco Part No.	Description	Hub Size		Shaft Size	
		in	mm	in	mm
SAE09639	10,000ft-lb Orange Drive Wrench	2.25	57	1.375	35
SAE08666	10,000ft-lb Yellow Drive Wrench	2.5	63.5	1.5	38

Slingco Part No.	Description	Weight	
		lb	kg
SAE11132	7,000ft-lb 1-1/2" Square Shank Anchor Tool Assembly	11.4	5.17

57 lb (28.85 kg) is the weight of each Drive Wrench

ANCHOR ROD PULLING EYE



The Slingco anchor rod pulling eye installs on 0.5" to 1.25" anchor rods and is used in conjunction with hoist to tension and install pole guy wires. Attach guy wire to ground anchors safely.

Slingco Part No.	Capacity	Load rating		Weight			
		in	mm	lb	kg		
SAE12540	Hot Dip Galvanized Steel	0.5-1.25	12.7 - 31.7	6,000	2721	5.3	2.4

35KV JUMPER CLAMP



Slingco's Jumper Clamps are used as a part of jumper cable assemblies to bypass work areas when equipment is under repair or being upgraded. Jumper clamps are lightweight and impact resistant making them incredibly durable. We make inspection of the cable, ferrule, and clamp simple and easy via the transparent clamp body. The jaw of the Slingco Jumper Clamp and floating ring contact is made from a copper-based alloy.

Slingco Part No.	Main Line Range	Max. Continuous Amps	Threading	Length	Weight
ZSC09344	954 MCM (0.162 - 1.25)	400	5/8" - 11 threads per inch	11.5" (292mm)	2.5 lb (1.15 kg)
ZSC12110	477 MCM (0.162 - 0.9)	400	5/8" - 11 threads/inch	11.5" (292mm)	2.4 lb (1.09 kg)

NOTE: Slingco Jumper Clamps are sold individually. Slingco Jumper Clamps meet ASTM F2321 standard.

RUBBER BLANKET ACCESSORIES



Used to hold insulating blankets and other types of rubber covers in place, Slingco Blanket Clamp Pins, Pole Clamps and Blanket Magnets are constructed of ultraviolet stabilized fiberglass reinforced polymer.

The **Slingco Blanket Clamp Pin** has extra holes in the center of the body and is used to grip conductors and prevent linehose from sliding. Holes have also been placed in the handles to enable attachment of warnings, tags, and/or flags. The handles of the pin are shaped to engage with the end ferrule of a clampstick (shotgun stick).

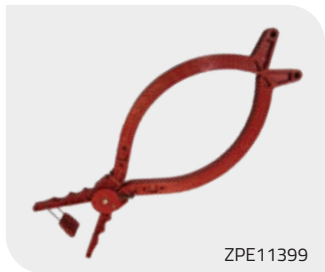
The **Slingco Pole Clamp** is meant to eliminate the use of tie wraps, bungee cords, tapes or any other items that can cause damage to insulated rubber products. With Slingco's unique tool handle lock system, the Pole Clamp can be set in an open position by engaging the handle lock. Once the product is in its intended location the lock can be released making installation easier.

The **Slingco Blanket Magnet** is designed to fit through the eyelets of an insulated blanket. Afterwards, the magnet along with the blanket can be placed over energized areas of transformers, switchboards and substations. Can be placed and repositioned with hot line tools.



Blanket Clamp Pin

Slingco Part No.	Length		Jaw Opening		Weight		Note
	in	mm	in	mm	oz	g	
ZPE10962	9.5	241	5	127	5	141.5	
ZPE12136	9.5	241	5	127	5.4	153	with Hot Stick Clip



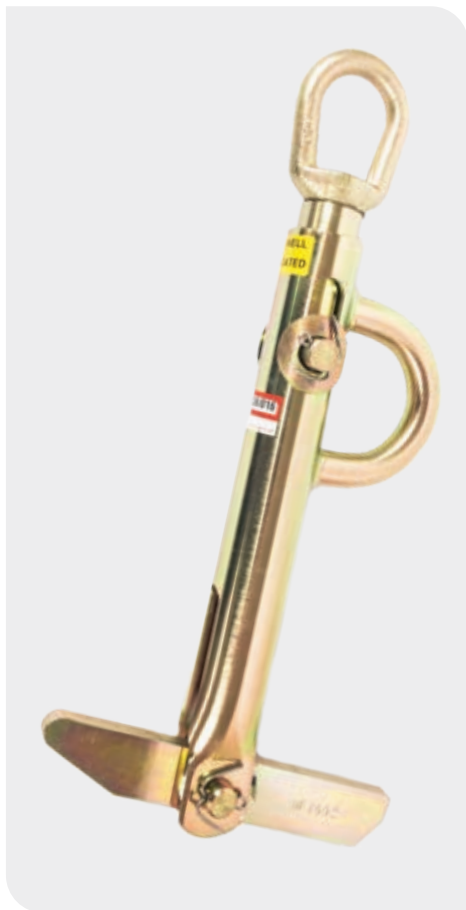
Pole Clamp

Slingco Part No.	Length		Width		Jaw Opening		Weight	
	in	mm	in	mm	in	mm	lb	kg
ZPE11399	20.25	514.4	8.25	203.2	13.5	342.9	1.7	0.77
ZPE11398	28	711.2	11.5	291.2	19.75	501.7	2.2	1.0

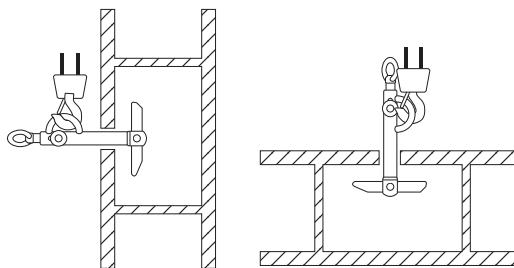
Blanket Magnet

Slingco Part No.	Height		Diameter		Weight		Magnet rating	
	in	mm	in	mm	lb	g	lb	kg
PPE10785	2.4	60.6	1.75	44.4	0.2	90.7	120	54.4

REEL LIFTER



The Slingco Reel Lifter is a high capacity, compact unit that allows users in the construction industry to safely load, transport, and dispense wire and/or cable on-site. It is also used in many industrial applications to make moving and relocating reels in a warehouse easy. Now a task that normally used a team of three or four people can be done with just one, allowing the crew to operate more efficiently!



Makes handling large cable reels quick and easy, on-site or in warehouses.

- Rugged construction to lift and upend reels
- Easy rotation to unroll cable
- Counterweighted bottom arm for easy insertion in reel
- Side lifting eye allows reels to be put into a rolling or non-rolling position
- Repair kits available

Reel Lifter					
Slingco Part No.	Arbor Hole Min. (ins)	Arbor Hole Max. (ins)	Capacity (lb)	Weight (lb)	Length (ins)
ZLD08729	2	4	3,000	6.50	16 1/8
ZLD09186	3	6	5,000	14.50	21 1/8
ZLD10807	3.25	6	12,000	32.33	30.53

Reel Lifter Repair Kit	
ZLD09708	3,000lb factory repair kit with extension springs, cable assemblies and all necessary pins for replacement of the interior cable system. Suitable for ZLD08729.
ZLD09707	5,000lb factory repair kit with extension springs, cable assemblies and all necessary pins for replacement of the interior cable system. Suitable for ZLD09186.

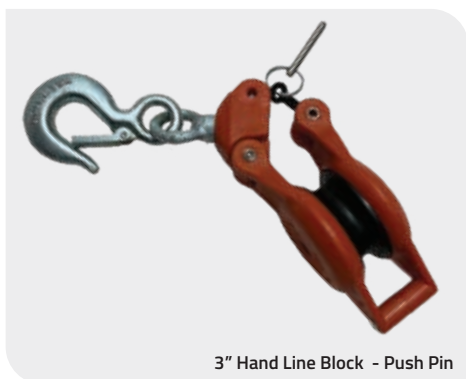
HAND LINE TOOLS



Slingco's Hand Line Tools feature a 3" (76.2mm) nylon fiberglass block, with a safe working load limit of 1,000 lb (453.59 kg), and a double locking snap with a safe working load limit of 5,000 lb (2267.96 kg).

Our 3" (76.2mm) Hand Line Block's sheave can accommodate a 0.625" (15.875 mm) diameter rope, and operates smoothly on the 0.5" (12.7 mm) diameter axle and swivel bearings. The side opening feature allows quick access to remove the hand line.

The Hand Line Hook is made of manganese bronze, and is made for use with 0.5" (12.7 mm) rope.



Slingco Part No.	Description	Working Load Limit	
		lb	kg
ZAB8725	3" Hand Line Block (Screw Pin)	1,000	453.59
ZAB8725-P	3" Hand Line Block (Push Pin)	1,000	453.59
HMI8556	Double Locking Snap	5,000	2,267.96
HMI6502	Hand Line Hook	272	123.38



POLE LIGHT KIT



Slingco's 360 degree, high visibility Pole Light Kit includes heavy duty frame, ratchet strap, two flags, two 'D' size batteries, and a 360 degree LED pole light with two settings (flash and solid).

Slingco recommends that you comply with all DOT transportation regulations for your state. This product is intended to be temporary. Inspect item before each use for wear, tear, or damage of any kind.

The Slingco Pole Light Kit has a QR code on the product so its manual is always available.

- Features:
- Lumens: 15,000 MCD
- Available spares include:
- Flags (in pairs): TPE12579
 - Ratchet straps: TPE12670
 - Light (Red): TPE12589
 - Light (Amber): TPE12409

Slingco Part No.	Description
TPE12606-A	Pole Light Kit with AMBER light
TPE12606-R	Pole Light Kit with RED light
SPARE PARTS	
TPE12409	AMBER Light for pole light kit
TPE12589	RED Light for pole light kit
TPE12579	Flags (pair)
TPE12670	Ratchet straps

Be informed. Be safe.

YOUR QUICK ACCESS GUIDE

At Slingco we're obsessed with quality and safety. And to that end, keeping you informed is key. We make finding information for our products quick and easy. You'll find QR codes on products so viewing manuals is simple while in the field with your mobile device.

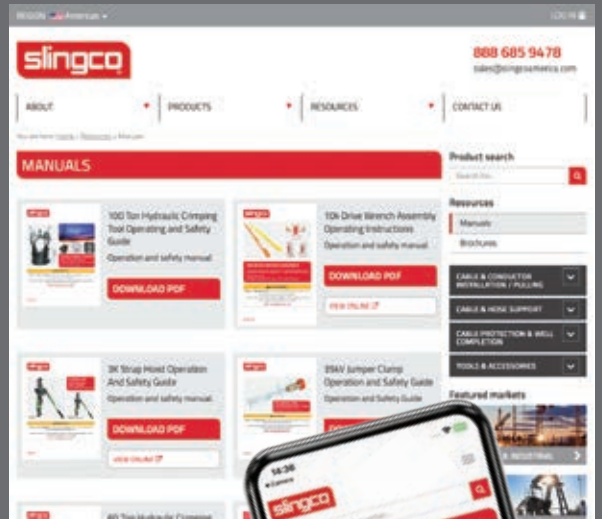
Don't hesitate to contact our network of distributors or Slingco directly for information. We're here to help!

Here's our QUICK ACCESS GUIDE to information available at your fingertips including product brochures, web pages, safety guides and instruction manuals.

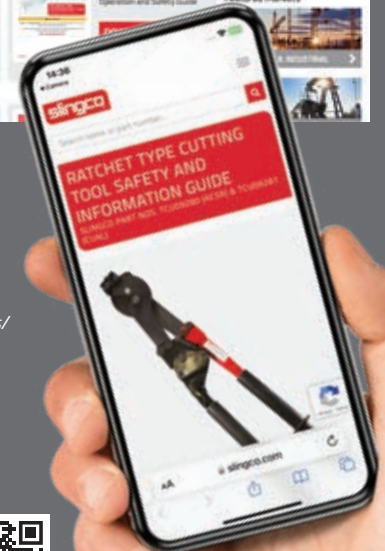


View our complete product range at slingcoamerica.com/products/

Downloadable product instruction manuals and safety guides ensure you get the best from Slingco products while staying safe.



See all our manual and brochure downloads at slingcoamerica.com/resources/



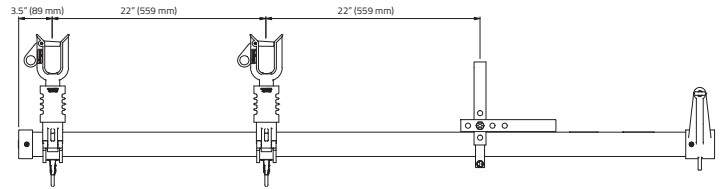
Scan the QR code to see our growing collection of online manuals.

FIBERGLASS EXTENSION ARM



RETROFIT KIT

Slingco's Fiberglass Extension Arm is designed to be used in situations such as moving out conductors to create working clearance in congested areas, or as a temporary aid in replacing insulators, and/or replacing existing conductors.



Slingco Part No.	Arm Dia./Length in (mm)	Phase-to-Phase Rating	Max. Vertical Load per Wireholder lb (kg)	Weight lb (kg)	Replacement Eye Screw
ITP10989	2.5" x 72" (63.5 x 1,828.8)	15kV	150 (68.04)	9.62 (4.36)	EBW09611
ITP10474*	2.5" x 72" (63.5 x 1,828.8)	34.5kV	150 (68.04)	10.61 (4.81)	EBW09611
ITP10925	Fiberglass Crossarm Retrofit Kit				

*ITP10474 34.5kV version includes insulators

GLOVE AND SLEEVE BAGS

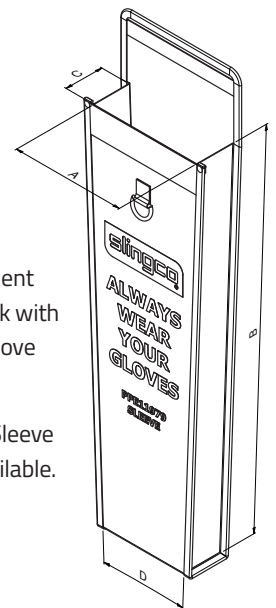


Features:

- Durable Canvas construction
- Convenient flap closure
- Four Glove Bag options
- Combination Glove & Sleeve bags
- Sleeve only bag available

Protecting your gloves and sleeves is convenient with Slingco canvas bags. Bags feature a hook with latch for attaching to belt plus flap closure. Glove bags come in four sizes 12", 14", 16" and 18".

Compact and full-size Combination Glove & Sleeve bags are available. A Sleeve Bag option is available.



Slingco Part No.	Description	A - Width in (mm)	B - Height in (mm)	C - Depth in (mm)	Weight lb (kg)			
GLOVE BAGS								
PPE11973	12" Glove Bag	7.78 (200)	11.73 (298)	2.36 (60)	0.4 (0.18)			
PPE11974	14" Glove Bag	7.78 (200)	14.88 (378)	3.54 (90)	0.5 (0.23)			
PPE11975	16" Glove Bag	7.78 (200)	16.85 (428)	3.54 (90)	0.6 (0.27)			
PPE11976	18" Glove Bag	7.78 (200)	18.82 (478)	3.94 (100)	0.7 (0.32)			
Slingco Part No.	Description	A - Width in (mm)	E - Glove Depth in (mm)	C - Glove Height in (mm)	B - Sleeve Width in (mm)	F - Sleeve Depth in (mm)	D - Sleeve Height in (mm)	Weight lb (kg)
GLOVE & SLEEVE BAGS								
PPE11977	Compact Glove & Sleeve Bag	7.78 (200)	3.15 (80)	15.67 (398)	7.78 (200)	3.15 (80)	19.21 (488)	0.9 (0.41)
PPE11978	Full-Size Glove & Sleeve	7.78 (200)	3.94 (100)	18.82 (478)	7.78 (200)	1.76 (70)	29.45 (748)	1.4 (0.64)
Slingco Part No.	Description	A - Width Top in (mm)	D - Width Bottom in (mm)	C - Depth in (mm)	B - Height in (mm)	Weight lb (kg)		
SLEEVE BAGS								
PPE11979	Sleeve Bag	7.78 (200)	6.7 (170)	2.76 (70)	27.09 (688)	0.8 (0.36)		

POLE PULLER



Slingco's pole puller is a must have to comply with today's safe working practices, reducing the potential for boom damage and greatly reducing the potential of personal injury.

The pole puller is easily assembled and disassembled. The standard pole puller system is composed of four pieces and the deluxe system six pieces. These configurations make the Slingco pole puller easy to handle and lighter weight than typical units on the market.

The Slingco Deluxe Pole Puller system includes the pole puller pad and back plate weldment. The pole puller pad has studs which keep the base plate in the optimum position when pulling poles.

The back plate weldment has angled teeth to increase hold on the pole during extraction. Slingco's pole puller offers a low point of attachment making it easy to remove even broken or cut poles. Convenient handles on the pole puller body make inserting over cylinder easy and pinch-free.



DELUXE SYSTEM



STANDARD SYSTEM

Slingco Part No.	Description	Max. Operating Pressure	Recommended Flow Rate	Lift at Max. Pressure		System Total Weight	
		PSI	GPM	lb	kg	lb	kg
TPE09386	Deluxe Pole Puller System	2,800	4 – 8	50,120	22,734	157	71.2
DELUXE Pole Puller System consists of: hydraulic cylinder*, chain, base weldment, swivel assembly PLUS back plate weldment, and pole puller pad. *hydraulic cylinder comes with flush face fittings installed.							
TPE10551	Standard Pole Puller System	2,800	4 – 8	50,120	22,734	128	58
STANDARD Pole Puller System consists of: hydraulic cylinder*, chain, base weldment, swivel assembly. *hydraulic cylinder comes with flush face fittings installed.							
TPE09378	Pole Puller Pad					23	10.43
TPE09367	Back Plate Weldment					6	2.72
TPE09371	Pole Puller Chain						
TPE10552	Swivel Weldment Assembly						

NOTE: See Pole Puller manual for complete parts breakout.

POLE STAND



Slingco's pole stands are lightweight and compact making them easy to place, remove, and store on your truck or jobsite. The support leg's swing-and-lock design make moving and storing the Slingco pole stand a breeze. The swing lock captures the legs in closed or open position for added safety.

- Lightweight and compact
- Quick swing-and-lock legs
- Positions poles for safe and comfortable framing

The pole stand positions the pole at an optimal height for easy and safe framing. The standard pole stand's capacity of 9,000 lb makes it capable of handling the majority of wood distribution poles. For larger poles the large pole stand has a capacity of 12,500 lb. The curved cradle allows for safe rotation of poles for proper framing positioning.

The pole stand's high visibility and durability make it a proven choice for any work location or environment.

Slingco Part No.	Description	Capacity		Height		Width		Weight	
		lb	kg	in	cm	in	cm	lb	kg
TPE09682	Pole Stand	9,000	4,082	23.75	60.33	30	76.2	32	14.5
TPE13932	Large Pole Stand	12,500	5,670	23.18	58.88	30.6	12	34.6	15.7

DIRT TARPS



Slingco's range of heavy-duty, re-usable dirt tarps have been created with safety in mind. Keeping workers out of awkward, injury-prone positions is better for their long-term health and the company's bottom line. Dirt tarps have become a must-have product at utility construction sites. You can find Slingco Dirt Tarps being used at pole change-outs, transformer terminations, pedestals, as well as underground gas, telephone, and other underground utility applications.

In fact, with the ability to move crushed rock, sand, dirt, wet cement, dig spoils, and other contaminated soil, there are few reasons NOT to have a Slingco Dirt Tarp on the project!

Slingco Part No.	Tarp Dimensions		Maximum Capacity	
	ft	mm	lb	kg
ZLD10015	10 x 10	3,048 x 3,048	5,000	2,267
ZLD10016	8 x 8	2,438 x 2,438	5,000	2,267
ZLD10793	7 x 7	2,133 x 2,133	4,000	1,814
ZLD10792	6 x 6	1,828 x 1,828	4,000	1,814

STRAP HOISTS

SPLICE, DEAD END, AND SAG LINES QUICKLY AND EFFICIENTLY

- ASME B-30-21 compliant
- 125% working load tested
- Hi-viz yellow strap
- Interlocking pawl lever system
- Replacement parts readily available
- Hot stick operable version



Linemen use the Slingco Strap Hoist to splice, dead end, and sag lines. The Slingco strap hoist features an easy to operate pressure die cast drum for a professional look and smooth finish to minimize the risk of strap fraying.

The hoist also features an interlocking pawl system with dual pawl springs for controlled tightening and releasing of the strap which ensures that the hoist is engaged while in use. The fiberglass handle assembly color matches to each colored strap to ensure use of appropriate handle with correct hoist.

The straps are Hi-Vis bright green, blue, and yellow in color for easy visibility and identification. Strap hoists may be operated in single line or double line modes for capacity required.

The strap hoist has three operations: lift/pull, lower/release, and freewheeling. For information while in the field, use the QR code found on Slingco products to quickly reach the user manual as well as helpful safety information while mobile. The strap hoist complies with ASME B-30-21 standards, and all units are tested to 125% of working load.

2K STRAP HOIST



ZLH14321



ZLH14447



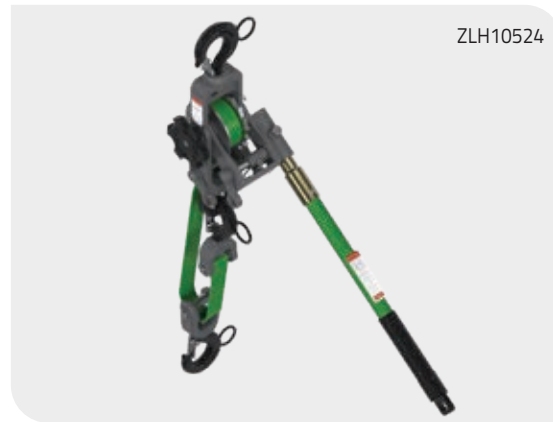
The Slingco 2K strap features a Hi-Viz yellow strap for easy identification. In single line mode capacity is 1K. When used in double line mode capacity is 2K. The 2k Strap Hoist has a pressure die cast drum for professional look and smooth finish to minimize the risk of strap fraying. The strap hoist has three operating positions: lift/pull, lower/release, and freewheeling. For information while in the field, use the QR code on Slingco products to quickly reach manual and helpful information on your mobile.

Slingco Part No.	Type	SINGLE LINE						DOUBLE LINE						Tool weight	
		Capacity		Lift		Headroom		Capacity		Lift		Headroom			
		lb	kg	ft	m	in	mm	lb	kg	ft	m	in	mm	lb	kg
ZLH14321	Standard	1,000	453.6	9	2.7	15.5	393.7	2,000	907	4.25	1.3	18.5	469.9	8.46	3.84
ZLH14447	Hot stick operated	1,000	453.6	9	2.7	15.5	393.7	2,000	907	4.25	1.3	18.5	469.9	9.04	4.10

3K STRAP HOIST



ZLH10504



ZLH10524



VIEW PRODUCT MANUAL

The Slingco 3K strap features a Hi-Viz green strap for easy identification. In single line mode capacity is 1.5K. When used in double line mode capacity is 3K. It has a pressure die cast drum for professional look and smooth finish to minimize the risk of strap fraying. The strap hoist has three operating positions: lift/pull, lower/release, and freewheeling. All strap hoists comply with ASME B-30-21 standard and all units are tested to 125% of load.

Slingco Part No.	Type	SINGLE LINE						DOUBLE LINE							
		Capacity		Lift		Headroom		Capacity		Lift		Headroom		Tool weight	
		lb	kg	ft	m	in	mm	lb	kg	ft	m	in	mm	lb	kg
ZLH10504	Standard	1,500	680	9	2.7	17.5	444.5	3,000	1,360	4.25	1.3	22	558.8	11.25	5.1
ZLH10524	Hot stick operated	1,500	680	9	2.7	17.5	444.5	3,000	1,360	4.25	1.3	22	558.8	11.5	5.22

4K STRAP HOIST



ZLH14335



ZLH14444



VIEW PRODUCT MANUAL

The Slingco 4K strap features a Hi-Viz blue strap for easy identification. In single line mode capacity is 2K. When used in double line mode capacity is 4K. The 4k Strap Hoist has a pressure die cast drum for professional look and smooth finish to minimize the risk of strap fraying. The strap hoist has three operating positions: lift/pull, lower/release, and freewheeling. Strap hoists come in standard and hot stick operable versions.

Slingco Part No.	Type	SINGLE LINE						DOUBLE LINE							
		Capacity		Lift		Headroom		Capacity		Lift		Headroom		Tool weight	
		lb	kg	ft	m	in	mm	lb	kg	ft	m	in	mm	lb	kg
ZLH14335	Standard	2,000	907	11	3.4	18.5	469.9	4,000	1,814	5.5	1.7	24	609.6	16.32	7.40
ZLH14444	Hot stick operated	2,000	907	11	3.4	18.5	469.9	4,000	1,814	5.5	1.7	24	609.6	16.85	7.64

SINGLE EYE CLOSED MESH CABLE SUPPORT GRIP



Slingco closed mesh support grip in 304 Stainless Steel. Closed mesh for when end of cable is available.



Slingco Part No	Range		Lattice Length		Approx. Break Load	
	in	mm	in	mm	lb	kg
ZCS1893	0.50 - 0.63	12 - 16	9.7	247	567	255
ZCS1894	0.63 - 0.75	16 - 19	9.7	247	890	400
ZCS1895	0.75 - 1.00	19 - 25	13	331	1,040	470
ZCS1896	1.00 - 1.25	25 - 31	13.5	344	1,700	770
ZCS1897	1.25 - 1.50	31 - 38	15	382	1,700	770
ZCS1898	1.50 - 1.75	38 - 44	16.5	420	1,700	770
ZCS1899	1.75 - 2.00	44 - 50	20	509	2,300	1,040
ZCS1900	2.00 - 2.50	50 - 63	21	535	3,400	1,540
ZCS1901	2.50 - 3.00	63 - 76	24	611	3,400	1,540
ZCS1902	3.00 - 3.50	76 - 89	26	662	5,000	2,265
ZCS1903	3.50 - 4.00	89 - 102	29	738	5,000	2,265
ZCS5032	3.50 - 4.50	89 - 114	46	1,168	5,000	2,265

SINGLE EYE SPLIT MESH LACE CLOSING CABLE SUPPORT GRIP



In 304 stainless steel. Split mesh is for when end of cable is not available.



Slingco Part No	Range		Lattice Length		Approx. Break Load	
	in	mm	in	mm	lb	kg
ZCS1904	0.50 - 0.63	12 - 16	9.7	247	567	255
ZCS1905	0.63 - 0.75	16 - 19	9.7	247	890	400
ZCS1906	0.75 - 1.00	19 - 25	13	331	1,040	470
ZCS1907	1.00 - 1.25	25 - 31	13.5	344	1,700	770
ZCS1908	1.25 - 1.50	31 - 38	15	382	1,700	770
ZCS1909	1.50 - 1.75	38 - 44	16.5	420	1,700	770
ZCS1910	1.75 - 2.00	44 - 50	20	509	2,300	1,040
ZCS1911	2.00 - 2.50	50 - 63	21	535	3,400	1,540
ZCS1912	2.50 - 3.00	63 - 76	24	611	3,400	1,540
ZCS1913	3.00 - 3.50	76 - 89	26	662	5,000	2,265
ZCS1914	3.50 - 4.00	89 - 102	29	738	5,000	2,265

SINGLE EYE SPLIT MESH ROD CLOSING CABLE SUPPORT GRIP



Similar to the lace up grip, in 304 Stainless Steel, but in this design it is closed by inserting a metal rod down the length of the grip. For when end of cable is not available.



Slingco Part No	Range		Lattice Length		Approx. Break Load	
	in	mm	in	mm	lb	kg
ZCS2362	0.50 - 0.63	12 - 16	9.7	247	567	255
ZCS2363	0.63 - 0.75	16 - 19	9.7	247	890	400
ZCS2162	0.75 - 1.00	19 - 25	13	331	1,040	470
ZCS2163	1.00 - 1.25	25 - 31	13.5	344	1,700	770
ZCS2164	1.25 - 1.50	31 - 38	15	382	1,700	770
ZCS2165	1.50 - 1.75	38 - 44	16.5	420	1,700	770
ZCS2166	1.75 - 2.00	44 - 50	20	509	2,300	1,040
ZCS2167	2.00 - 2.50	50 - 63	21	535	3,400	1,540
ZCS2168	2.50 - 3.00	63 - 76	24	611	3,400	1,540
ZCS2169	3.00 - 3.50	76 - 89	26	662	5,000	2,265
ZCS2372	3.50 - 4.00	89 - 102	29	738	5,000	2,265

DOUBLE EYE CLOSED MESH CABLE SUPPORT GRIP



Double eye closed mesh support grip in 304 stainless steel. Two eyes for two connect/support points. Closed mesh for when end of cable is available.

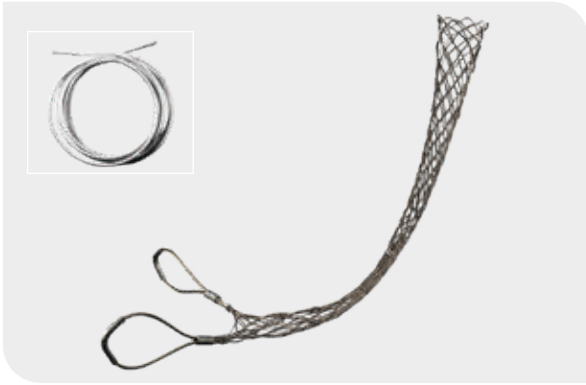


Slingco Part No	Range		Lattice Length		Approx. Break Load	
	in	mm	in	mm	lb	kg
ZCS2038	0.50 - 0.63	12 - 16	9.7	247	512	230
ZCS2039	0.63 - 0.75	16 - 19	9.7	247	740	335
ZCS2040	0.75 - 1.00	19 - 25	13	331	1,000	450
ZCS2041	1.00 - 1.25	25 - 31	15	344	1,540	695
ZCS2042	1.25 - 1.50	31 - 38	16.5	382	1,540	695
ZCS2043	1.50 - 1.75	38 - 44	20	420	2,010	910
ZCS2044	1.75 - 2.00	44 - 50	21	509	3,230	1,465
ZCS2045	2.00 - 2.50	50 - 63	24	535	3,230	1,465
ZCS2046	2.50 - 3.00	63 - 76	26	611	4,000	1,815
ZCS2047	3.00 - 3.50	76 - 89	29	662	4,000	1,815
ZCS2048	3.50 - 4.00	89 - 102	29	738	4,001	1,815
ZCS6404	4.00 - 4.50	102 - 114	30	762	4,000	1,815
ZCS6405	4.50 - 5.00	114 - 127	30	762	4,000	1,815
ZCS6406	5.00 - 5.50	127 - 140	30	762	4,000	1,815

DOUBLE EYE SPLIT MESH LACE CLOSING CABLE SUPPORT GRIP



Double eye split mesh lace closing, in 304 Stainless Steel, for secure attachment and support where the cable end is not accessible.



Slingco Part No	Range		Lattice Length		Approx. Break Load	
	in	mm	in	mm	lb	kg
ZCS2998	0.50 - 0.63	12 - 16	10	254	530	240
ZCS2999	0.63 - 0.75	16 - 19	10	254	790	360
ZCS3000	0.75 - 1.00	19 - 25	13	330	1,020	460
ZCS3001	1.00 - 1.25	25 - 31	14	355	1,610	730
ZCS3002	1.25 - 1.50	31 - 38	15	381	1,610	730
ZCS3003	1.50 - 1.75	38 - 44	17	432	1,610	730
ZCS3004	1.75 - 2.00	44 - 50	19	482	2,150	975
ZCS3005	2.00 - 2.50	50 - 63	21	533	3,260	1,480
ZCS3006	2.50 - 3.00	63 - 76	23	584	3,260	1,480
ZCS3007	3.00 - 3.50	76 - 89	25	635	4,900	2,222
ZCS3008	3.50 - 4.00	89 - 102	27	685	4,900	2,222

DOUBLE EYE SPLIT MESH ROD CLOSING CABLE SUPPORT GRIP



Double eye split mesh rod closing, in 304 Stainless Steel, for secure attachment and support where the cable end is not accessible.



Slingco Part No	Range		Lattice Length		Approx. Break Load	
	in	mm	in	mm	lb	kg
ZCS3009	0.50 - 0.63	12 - 16	8.5	216	790	355
ZCS3010	0.63 - 0.75	16 - 19	8.5	216	790	355
ZCS3011	0.75 - 1.00	19 - 25	10.5	266	1,020	460
ZCS3012	1.00 - 1.25	25 - 31	12.5	317	1,610	730
ZCS3013	1.25 - 1.50	31 - 38	14.5	368	1,610	730
ZCS3014	1.50 - 1.75	38 - 44	15.5	394	1,610	730
ZCS3015	1.75 - 2.00	44 - 50	16.5	419	2,150	975
ZCS3016	2.00 - 2.50	50 - 63	19.5	495	3,260	1,475
ZCS3017	2.50 - 3.00	63 - 76	21.5	546	3,260	1,475
ZCS3018	3.00 - 3.50	76 - 89	23.5	597	5,750	2,600
ZCS3019	3.50 - 4.00	89 - 102	25.5	648	5,750	2,600



OFFSET EYE CLOSED MESH CABLE SUPPORT GRIP

This offset eye grip, in 304 Stainless Steel, is designed to support cable as it hangs vertically or horizontally when the end of the cable is available.



Slingco Part No	Range		Lattice Length		Approx. Break Load	
	in	mm	in	mm	lb	kg
ZCS1915	0.50 - 0.63	12 - 16	9.7	247	512	230
ZCS1916	0.63 - 0.75	16 - 19	9.7	247	740	335
ZCS1917	0.75 - 1.00	19 - 25	13	331	1,000	450
ZCS1918	1.00 - 1.25	25 - 31	13.5	344	1,540	695
ZCS1919	1.25 - 1.50	31 - 38	15	382	1,540	695
ZCS1920	1.50 - 1.75	38 - 44	16.5	420	1,540	910
ZCS1921	1.75 - 2.00	44 - 50	20	509	2,010	1,465
ZCS1922	2.00 - 2.50	50 - 63	21	535	3,230	1,465
ZCS1923	2.50 - 3.00	63 - 76	24	611	3,230	1,815
ZCS1924	3.00 - 3.50	76 - 89	26	662	4,000	1,815
ZCS1925	3.50 - 4.00	89 - 102	29	738	4,000	1,815
ZCS6408	4.00 - 4.50	102 - 114	28	711	4,000	1,815
ZCS6409	4.50 - 5.00	114 - 127	28	711	4,000	1,815
ZCS6410	5.00 - 5.50	127 - 140	28	711	4,000	1,815



OFFSET EYE SPLIT MESH LACE CLOSING CABLE SUPPORT GRIP

This grip, in 304 Stainless Steel, is ideal for several support points along the same cable when the cable ends are not accessible.



Slingco Part No	Range		Lattice Length		Approx. Break Load	
	in	mm	in	mm	lb	kg
ZCS1926	0.50 - 0.63	12 - 16	10	254	500	225
ZCS1927	0.63 - 0.75	16 - 19	10	254	750	340
ZCS1928	0.75 - 1.00	19 - 25	13	330	950	430
ZCS1929	1.00 - 1.25	25 - 31	14	355	1,500	680
ZCS1930	1.25 - 1.50	31 - 38	15	381	1,500	680
ZCS1931	1.50 - 1.75	38 - 44	17	432	1,500	680
ZCS1932	1.75 - 2.00	44 - 50	19	482	2,000	905
ZCS1933	2.00 - 2.50	50 - 63	21	533	2,150	975
ZCS1934	2.50 - 3.00	63 - 76	23	584	2,150	975
ZCS1935	3.00 - 3.50	76 - 89	25	635	3,800	1,720
ZCS1936	3.50 - 4.00	89 - 102	27	685	3,800	1,720



OFFSET EYE SPLIT MESH ROD CLOSING CABLE SUPPORT GRIP

Ideal for several support points along the same cable when the cable ends are not accessible. Made from 304 Stainless Steel.



Slingco Part No	Range		Lattice Length		Approx. Break Load	
	in	mm	in	mm	lb	kg
ZCS3031	0.50 - 0.63	12 - 16	7	178	500	225
ZCS3032	0.63 - 0.75	16 - 19	9	229	750	340
ZCS3033	0.75 - 1.00	19 - 25	10	254	950	430
ZCS3034	1.00 - 1.25	25 - 31	12	305	1,500	680
ZCS3035	1.25 - 1.50	31 - 38	14	359	1,500	680
ZCS3036	1.50 - 1.75	38 - 44	15	381	1,500	680
ZCS3037	1.75 - 2.00	44 - 50	16	406	2,000	905
ZCS3038	2.00 - 2.50	50 - 63	19	483	3,100	975
ZCS3039	2.50 - 3.00	63 - 76	20	508	3,100	975
ZCS3040	3.00 - 3.50	76 - 89	21	533	4,300	1,720
ZCS3041	3.50 - 4.00	89 - 102	21	533	4,900	1,720

UNIVERSAL EYE CLOSED MESH CABLE SUPPORT GRIP



Fitted with an adjustable eye for easy and secure attachment, where the end of the cable can be inserted in to the support grip. Made from 304 Stainless Steel.



Slingco Part No	Range		Lattice Length		Approx. Break Load	
	in	mm	in	mm	lb	kg
ZCS2664	0.50 - 0.63	12 - 16	10	254	530	240
ZCS4272	0.58 - 0.68	14.7 - 17.3	12	305	1,050	469
ZCS2665	0.63 - 0.75	16 - 19	10	254	790	360
ZCS2666	0.75 - 1.00	19 - 25	13	330	1,020	460
ZCS4273	0.75 - 0.87	19 - 22.1	13	330	1,390	620
ZCS4274	0.87 - 1.00	22.1 - 25	14	355	1,790	799
ZCS2667	1.00 - 1.25	25 - 31	14	355	1,610	730
ZCS2324	1.25 - 1.50	31 - 38	15	381	1,610	730
ZCS2668	1.50 - 1.75	38 - 44	17	432	1,610	730
ZCS2669	1.75 - 2.00	44 - 50	19	483	2,150	975
ZCS2670	2.00 - 2.50	50 - 63	21	533	3,260	1,480
ZCS2671	2.50 - 3.00	63 - 76	23	584	3,260	1,480

UNIVERSAL EYE SPLIT MESH LACE CLOSING CABLE SUPPORT GRIP



Fitted with an adjustable eye for easy and secure attachment, where the end of the cable is not accessible. Made from 304 Stainless Steel.



Slingco Part No	Range		Lattice Length		Approx. Break Load	
	in	mm	in	mm	lb	kg
ZCS2672	0.50 - 0.63	12 - 16	10	254	530	240
ZCS2673	0.63 - 0.75	16 - 19	10	254	790	360
ZCS2674	0.75 - 1.00	19 - 25	13	330	1,020	460
ZCS2675	1.00 - 1.25	25 - 31	14	355	1,610	730
ZCS2676	1.25 - 1.50	31 - 38	15	381	1,610	730
ZCS2677	1.50 - 1.75	38 - 44	17	432	1,610	730
ZCS2678	1.75 - 2.00	44 - 50	19	483	2,150	975
ZCS2679	2.00 - 2.50	50 - 63	21	533	3,260	1,480
ZCS2680	2.50 - 3.00	63 - 76	23	584	3,280	1,480
ZCS2681	3.00 - 3.50	76 - 89	25	635	4,900	2,222
ZCS2682	3.50 - 4.00	89 - 102	27	686	4,900	2,222

UNIVERSAL EYE SPLIT MESH ROD CLOSING CABLE SUPPORT GRIP

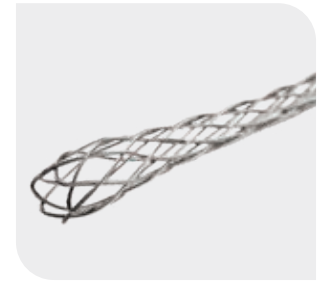
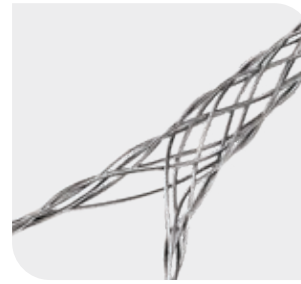


Fitted with an adjustable eye for easy and secure attachment, where the end of the cable is not accessible. Made from 304 Stainless Steel.

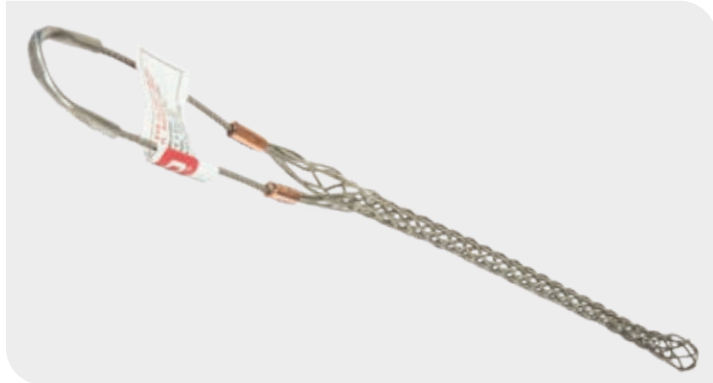


Slingco Part No	Range		Lattice Length		Approx. Break Load	
	in	mm	in	mm	lbs	kg
ZCS2683	0.50 - 0.63	12 - 16	8.5	216	530	240
ZCS2684	0.63 - 0.75	16 - 19	8.5	216	790	360
ZCS2685	0.75 - 1.00	19 - 25	10.5	267	1,020	460
ZCS2686	1.00 - 1.25	25 - 31	12.5	317	1,610	730
ZCS2687	1.25 - 1.50	31 - 38	14.5	368	1,610	730
ZCS2688	1.50 - 1.75	38 - 44	15.5	394	1,610	730

Heavy Duty support grips made from 316 Stainless Steel are perfect for supporting heavier cable, conduit or any other cylindrical object. Often used by Utilities and Contractors to support cables transitioning from overhead to underground. One may support multiple cables in one grip. The overall diameter of the cable bundle should fit within the listed range.

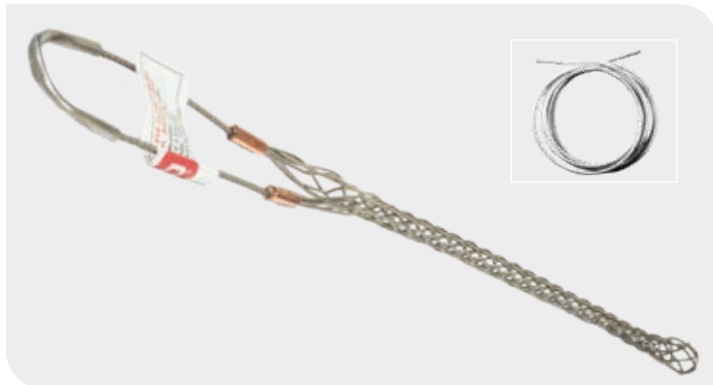


HEAVY DUTY SUPPORT GRIPS - SINGLE EYE



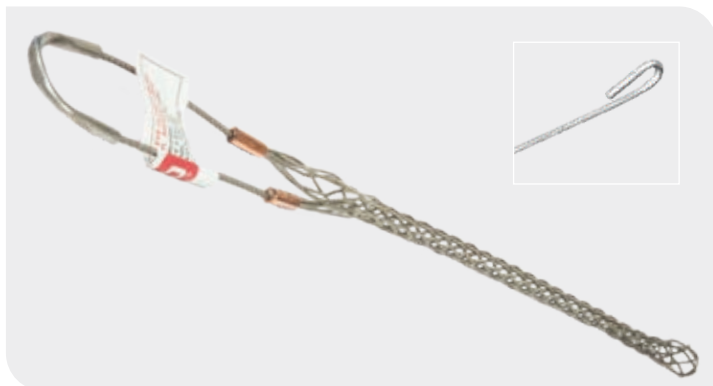
Slingco Part No.	Range		Lattice Length		Lattice Material	Approx. Break Load	
	in	mm	in	mm		lb	kg
ZCS7065	0.50 - 0.63	13 - 16	10	254	Stainless Steel	1,370	621
ZCS7066	0.63 - 0.75	16 - 19	10.5	267	Stainless Steel	2,060	944
ZCS7067	0.75 - 1.00	19 - 25	13.5	343	Stainless Steel	2,060	944
ZCS7068	1.00 - 1.25	25 - 32	15	381	Stainless Steel	2,678	1,216
ZCS7069	1.25 - 1.50	32 - 38	17.5	445	Stainless Steel	4,490	2,037
ZCS7070	1.50 - 1.75	38 - 44	19.5	495	Stainless Steel	4,490	2,037
ZCS7071	1.75 - 2.00	44 - 51	21	533	Stainless Steel	5,000	2,269
ZCS7072	2.00 - 2.50	51 - 63	21.5	546	Stainless Steel	8,940	4,056
ZCS7073	2.50 - 3.00	63 - 76	22.5	572	Stainless Steel	8,940	4,056
ZCS7074	3.00 - 3.50	76 - 87	27	686	Stainless Steel	13,420	6,089
ZCS7075	3.50 - 4.00	87 - 102	32.5	826	Stainless Steel	13,420	6,089

HEAVY DUTY SUPPORT GRIPS - SINGLE EYE LACE-UP



Slingco Part No.	Range		Lattice Length		Lattice Material	Approx. Break Load	
	in	mm	in	mm		lb	kg
ZCS6907	0.50 - 0.63	13 - 16	11	279	316 SS	1,370	621
ZCS6908	0.63 - 0.75	16 - 19	12.5	318	316 SS	2,080	944
ZCS6909	0.75 - 1.00	19 - 25	12.5	318	316 SS	2,080	944
ZCS6910	1.00 - 1.25	25 - 32	13.5	343	316 SS	2,670	1,211
ZCS6911	1.25 - 1.50	32 - 38	15.5	343	316 SS	4,490	2,037
ZCS6912	1.50 - 1.75	38 - 44	18.5	470	316 SS	4,490	2,037
ZCS6913	1.75 - 2.00	44 - 51	22.5	572	316 SS	5,000	2,269
ZCS6914	2.00 - 2.50	51 - 63	22.5	572	316 SS	8,940	4,056
ZCS6915	2.50 - 3.00	63 - 76	25	635	316 SS	8,940	4,056
ZCS6916	3.00 - 3.50	76 - 87	28.5	724	316 SS	13,420	6,089
ZCS6917	3.50 - 4.00	87 - 102	28.5	724	316 SS	13,420	6,089

HEAVY DUTY SUPPORT GRIPS - SINGLE EYE ROD CLOSING



Slingco Part No.	Range		Lattice Length		Lattice Material	Approx. Break Load	
	in	mm	in	mm		lb	kg
ZCS7076	0.50 - 0.63	13 - 16	11	279	304 SS	1,370	621
ZCS7077	0.63 - 0.75	16 - 19	12	305	304 SS	2,080	944
ZCS7078	0.75 - 1.00	19 - 25	14	356	304 SS	2,080	944
ZCS7079	1.00 - 1.25	25 - 32	15	381	304 SS	2,670	1,211
ZCS7080	1.25 - 1.50	32 - 38	16.5	419	304 SS	4,490	2,037
ZCS7081	1.50 - 1.75	38 - 44	19.5	495	304 SS	4,490	2,037
ZCS7082	1.75 - 2.00	44 - 51	21	533	304 SS	5,000	2,269
ZCS7083	2.00 - 2.50	51 - 63	26	660	304 SS	8,940	4,056
ZCS7084	2.50 - 3.00	63 - 76	24.5	622	304 SS	8,940	4,056
ZCS7085	3.00 - 3.50	76 - 87	27	686	304 SS	13,420	6,089
ZCS7086	3.50 - 4.00	87 - 102	36	914	304 SS	13,420	6,089

HEAVY DUTY SUPPORT GRIPS - DOUBLE EYE



Slingco Part No.	Range		Lattice Length		Lattice Material	Approx. Break Load	
	in	mm	in	mm		lb	kg
ZCS3057	0.50 - 0.63	13 - 16	10.9	277	316 SS	1,370	621
ZCS3058	0.63 - 0.75	16 - 19	10.2	258	316 SS	2,080	944
ZCS3059	0.75 - 1.00	19 - 25	13.6	346	316 SS	2,080	944
ZCS3060	1.00 - 1.25	25 - 32	15	381	316 SS	2,670	1,211
ZCS7136	1.00 - 1.25	25 - 32	22	559	316 SS	2,670	1,211
ZCS7137	1.25 - 1.50	31 - 38	25.2	640	316 SS	4,490	2,037
ZCS7138	1.50 - 1.75	38 - 44	27	686	316 SS	4,490	2,037
ZCS7139	1.75 - 2.00	44 - 50	31	782	316 SS	5,000	2,268
ZCS3064	2.00 - 2.50	50 - 63	21	533	316 SS	8,940	4,056
ZCS7140	2.00 - 2.50	50 - 63	28	711	316 SS	8,940	4,056
ZCS3065	2.50 - 3.00	63 - 76	24.5	622	316 SS	8,940	4,056
ZCS7141	2.50 - 3.00	63 - 76	30	762	316 SS	8,940	4,056
ZCS7142	3.00 - 3.50	76 - 89	34	864	316 SS	12,000	5,445
ZCS7143	3.50 - 4.00	89 - 102	38	965	316 SS	12,000	5,445
ZCS7144	4.00 - 4.50	102 - 114	42	1,066	316 SS	12,000	5,445
ZCS7145	4.50 - 5.00	114 - 127	42	1,066	316 SS	12,000	5,445

HEAVY DUTY SUPPORT GRIPS - DOUBLE EYE LACE-UP



Slingco Part No.	Range		Lattice Length		Lattice Material	Approx. Break Load	
	in	mm	in	mm		lb	kg
ZCS7087	0.50 - 0.63	13 - 16	11	277	316 SS	1,370	621
ZCS7088	0.63 - 0.75	16 - 19	12	309	316 SS	2,080	944
ZCS7089	0.75 - 1.00	19 - 25	13	332	316 SS	2,080	944
ZCS7090	1.00 - 1.25	25 - 32	15.5	391	316 SS	2,670	1,211
ZCS7091	1.25 - 1.50	32 - 38	16.5	417	316 SS	4,490	2,037
ZCS7092	1.50 - 1.75	38 - 44	23	589	316 SS	4,490	2,037
ZCS7093	1.75 - 2.00	44 - 51	22	569	316 SS	5,000	2,269
ZCS7094	2.00 - 2.50	51 - 63	26	654	316 SS	8,940	4,056
ZCS7095	2.50 - 3.00	63 - 76	24.5	623	316 SS	8,940	4,056
ZCS7096	3.00 - 3.50	76 - 87	29.5	749	316 SS	13,420	6,089
ZCS7097	3.50 - 4.00	87 - 102	37.5	950	316 SS	13,420	6,089

HEAVY DUTY SUPPORT GRIPS - DOUBLE EYE ROD CLOSING



Slingco Part No.	Range		Lattice Length		Lattice Material	Approx. Break Load	
	in	mm	in	mm		lb	kg
ZCS7098	0.50 - 0.63	13 - 16	11	277	304 SS	1,370	621
ZCS7099	0.63 - 0.75	16 - 19	12	309	304 SS	2,080	944
ZCS7100	0.75 - 1.00	19 - 25	14	351	304 SS	2,080	944
ZCS7101	1.00 - 1.25	25 - 32	15	391	304 SS	2,670	1,211
ZCS7102	1.25 - 1.50	32 - 38	16	417	304 SS	4,490	2,037
ZCS7103	1.50 - 1.75	38 - 44	16.5	494	304 SS	4,490	2,037
ZCS7104	1.75 - 2.00	44 - 51	17.5	537	304 SS	5,000	2,269
ZCS7105	2.00 - 2.50	51 - 63	26	654	304 SS	8,940	4,056
ZCS7106	2.50 - 3.00	63 - 76	25	623	304 SS	8,940	4,056
ZCS7107	3.00 - 3.50	76 - 87	27	693	304 SS	13,420	6,089
ZCS7108	3.50 - 4.00	87 - 102	36	914	304 SS	13,420	6,089

NEED ADDITIONAL RODS OR LACE WIRE?
 Call or email your Slingco representative now!

888 685 9478
sales@slingcoamerica.com

I-GRIPS



Strain Relief mesh grip with crimped eye connectors for easy attachment to cord clamps. Eye connectors allow for attachment with screws for secure placement and hold. Made of galvanized wire these grips come in a variety of cable ranges. When installed relieves strain from bend angle and secures cord from pull out potential. Connectors made of aluminum.

Slingco Part No.	Size Range		Mesh Length		Eye Opening		Approx. Break Load	
	in	mm	in	mm	in	mm	lb	kg
ZCS8527	0.22 - 0.32	5.6 - 8.1	4.5	114.3	0.32	8.1	100	45.36
ZCS8513	0.30 - 0.43	7.62 - 11	4.5	114.3	0.32	8.1	180	81.64
ZCS8514	0.40 - 0.56	10 - 14	5	127	0.32	8.1	180	81.64
ZCS8515	0.52 - 0.73	13.2 - 19	6.5	157.5	0.32	8.1	450	204
ZCS8516	0.70 - 0.85	18 - 22	8.5	216	0.32	8.1	600	272
ZCS8517	0.82 - 1.00	21 - 25	8.5	216	0.32	8.1	600	272
ZCS8518	0.94 - 1.25	24 - 32	11.75	298.5	0.32	8.1	600	272
ZCS11560	1.75 - 2.0	44.45 - 50.8	11.75	298.5	0.25	6.3	600	272

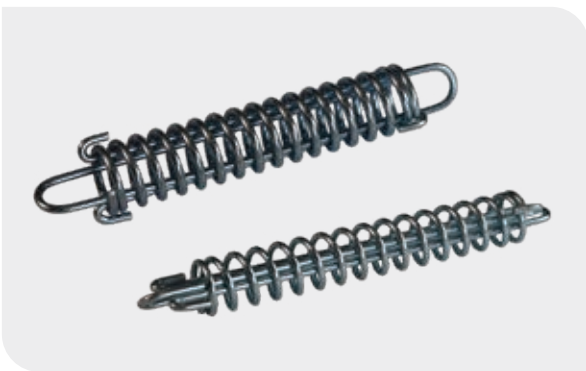
LOCKING BALE BUS DROP GRIPS



Locking bale bus drop grips are perfect for supporting cables when the attachment point is a bar, pipe, or rod around which the eyes of the grip may be wrapped. These grips have two long eyes intended to wrap around an attachment point and then secured into the locking bale plate. Closed mesh and made of Galvanized wire.

Slingco Part No.	Range (in)	Bale Length (in)	Mesh Length (in)	Wire Material	Approx. Break Load (lb)
ZCS8588	0.22 - 0.32	12	3.5	Galvanized	1100
ZCS8589	0.30 - 0.43	12	4.5	Galvanized	1100
ZCS8590	0.41 - 0.56	12	5.0	Galvanized	1100
ZCS8591	0.53 - 0.73	15	6.5	Galvanized	1100
ZCS8592	0.70 - 0.85	16	8.5	Galvanized	1900
ZCS8593	0.82 - 1.0	16	8.5	Galvanized	1900
ZCS8594	0.96 - 1.25	19	11	Galvanized	1900

SPRINGS



Support the dead weight of cables. Used in conjunction with support, service or bus drop grips. These safety springs relieve strain by dampening pull vibrations. Available in two working load strengths. The safety spring helps prevent pull outs. Avoid downtime and accidents from disconnected cables.

Can be used with any strain relief support grips. Attach grip eye to bottom of spring.

Slingco Part No.	Working Load (lb)	Diameter (in)	Spring Length (in)
ZCS8560	40	0.75	6.1
ZCS8561	80	1.00	6.1



These lightweight easy to use grips are perfect for supporting cables in such applications as Data Centers, Control Centers and other wiring to rack applications.

Use these grips to support cables in manufacturing, industrial and open space environments. The extended eye allows for easy installation and hanging from conveniently placed connection points. Also great for Control room and wire to rack applications.

Grip range has varying eye lengths for convenience of install.

Slingco Part No	Range		Wire Material	Eye length		Approx. Break Load	
	in	mm		in	mm	lb	kg
ZCS6969	0.22 - 0.32	6.1 - 8.1	Galvanized	3.5	88.9	350	158
ZCS6970	0.30 - 0.43	8.1 - 10.9	Galvanized	4	101.6	450	204
ZCS6971	0.41 - 0.56	10.9 - 14.2	Galvanized	4.75	120.6	550	249
ZCS6972	0.53 - 0.73	14.2 - 18.5	Galvanized	6	152.4	1,000	453
ZCS6973	0.70 - 0.85	18.5 - 21.6	Galvanized	6.75	171.4	1,400	635
ZCS6974	0.82 - 1.00	21.6 - 25.4	Galvanized	8	203.2	1,400	635
ZCS6975	0.96 - 1.25	25.4 - 31.7	Galvanized	9.5	241.3	1,500	680
ZCS09744	0.22 - 0.32	6.1 - 8.1	304 Stainless Steel	3.5	88.9	100	45.36
ZCS09745	0.30 - 0.43	8.1 - 10.9	304 Stainless Steel	4	101.6	260	117.9
ZCS09746	0.41 - 0.56	10.9 - 14.2	304 Stainless Steel	4.75	120.6	550	249
ZCS09717	0.53 - 0.73	14.2 - 18.5	304 Stainless Steel	6	152.4	1,000	453
ZCS09747	0.70 - 0.85	18.5 - 21.6	304 Stainless Steel	6.75	171.4	1,400	635
ZCS09748	0.82 - 1.00	21.6 - 25.4	304 Stainless Steel	8.0	203.2	1,400	635
ZCS09749	0.96 - 1.25	25.4 - 31.7	304 Stainless Steel	9.5	241.3	1,400	680
ZCS09968	0.41 - 0.56	10.9 - 14.2	ALL 316 Stainless Steel	4.75	120.6	550	249
ZCS09969	0.53 - 0.73	14.2 - 18.5	ALL 316 Stainless Steel	6	152.4	1,000	453
ZCS10400	0.70 - 0.85	18.5 - 21.6	ALL 316 Stainless Steel	6.75	171.4	1,400	635
ZCS10401	0.82 - 1.00	21.6 - 25.4	ALL 316 Stainless Steel	8.0	203.2	1,400	635
ZCS7684	0.22 - 0.32	5.6 - 8.1	Galvanized	9	229	1,100	499
ZCS7685	0.30 - 0.43	7.6 - 10.9	Galvanized	9	229	1,100	499
ZCS7686	0.41 - 0.56	10.4 - 14.2	Galvanized	9	229	1,100	499
ZCS7687	0.53 - 0.73	13.5 - 18.5	Galvanized	9	229	1,100	499
ZCS7688	0.70 - 0.85	17.8 - 21.6	Galvanized	9	229	1,900	861
ZCS7689	0.82 - 1.00	20.8 - 31.7	Galvanized	9	229	1,900	861
ZCS7690	0.96 - 1.25	24.4 - 31.7	Galvanized	7	178	1,900	861
ZCS09733	0.22 - 0.32	5.6 - 8.1	304 Stainless Steel	9	229	650	294
ZCS09734	0.30 - 0.43	7.6 - 10.9	304 Stainless Steel	9	229	1,100	499
ZCS09735	0.41 - 0.56	10.4 - 14.2	304 Stainless Steel	9	229	1,100	499
ZCS09736	0.53 - 0.73	13.5 - 18.5	304 Stainless Steel	9	229	1,100	499
ZCS09737	0.70 - 0.85	17.8 - 21.6	304 Stainless Steel	9	229	1,900	861
ZCS09738	0.82 - 1.00	20.8 - 31.7	304 Stainless Steel	9	229	1,900	861
ZCS09739	0.96 - 1.25	24.4 - 31.7	304 Stainless Steel	7	178	1,900	861

CAN'T FIND THE SPECIFICATION YOU NEED?
 Call or email for full ranges plus custom manufacture options

888 685 9478
 sales@slingcoamerica.com

CONDUIT RISER CABLE GRIP - STAINLESS STEEL



Conduit riser grips are designed to support cables within conduit. Designed to match standard conduit sizes. These grips come in single and double weave as indicated in the chart below. Also available in Split Ring design for supporting cable already installed or when the end of the cable is not available.



Call 888-685-9478 for additional sizes and styles.

Slingco comparison reference numbers and Approximate breaking strengths (lb)

Conduit size inches	Cable sizes diameter inches																	
	0.50 - 0.63	0.63 - 0.75	0.75 - 1.00	1.00 - 1.25	1.25 - 1.50	1.50 - 1.75	1.75 - 2.00	2.0 - 2.5	2.0 - 3.0	2.5 - 3.0	2.5 - 3.5	3.0 - 3.5	3.5 - 4.0	3.5 - 4.0	3.5 - 4.5	4.0 - 4.5	4.5 - 5.0	4.5 - 5.0
	Length inches																	
	8	9	11	12	12	14	15	17	17	18	19	20	18	21	20	21	27	27
0.75	ZCS2690 530																	
1	ZCS2691 490	ZCS2694 790																
1.25	ZCS2692 450	ZCS2695 740	ZCS2698 1,030															
1.5		ZCS2696 690	ZCS2699 970	ZCS2701 1,610														
2	ZCS2693 370	ZCS2697 640	ZCS2700 920	ZCS2702 1,520	ZCS2704 1,610													
2.5			ZCS2711 870		ZCS2705 1,510	ZCS2707 1,610	ZCS2708 2,150											
3				ZCS2703 1,340	ZCS2706 1,400	ZCS2709 1,490	ZCS2710 1,990	ZCS2711 3,260										
3.5								ZCS2714 2,970		ZCS2716 3,260								
4							ZCS2712 1,670	ZCS2713 2,680	ZCS2715 2,890	ZCS4282 4,080	ZCS2717 4,080							
								ZCS4500* 2,722		ZCS4501* 2,722	SPLIT ROD							
5								ZCS5645* 2,150	ZCS2719 2,150		ZCS2721 2,860	ZCS5646* 3,130	ZCS2723 3,130	ZCS3200* 10,000	ZCS4283 3,080	SPLIT ROD	ZCS4277 3,130	
6											ZCS2722 2,240	ZCS2724 2,240	ZCS5647 2,240	ZCS4755 2,240	ZCS3259 4,995	ZCS4284 (4,995)		

*Indicates Double Weave

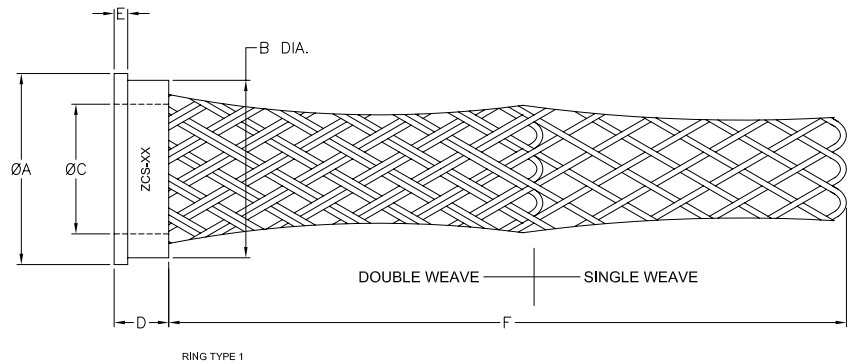
HOOKED EYE RISER POLE CABLE SUPPORT GRIP



Heavy duty stainless steel grip for outdoor riser pole applications.

Slingco Part No	Range		Lattice Weave	Lattice Length		Approx. Break Load	
	in	mm		in	mm	lb	kg
ZCS5430	2.25 - 2.75	57 - 70	Double	21	533	2,000	910
ZCS5268	3.25 - 3.75	82 - 95	Double	21	533	6,500	2,902
ZCS5062	3.50 - 4.25	89 - 108	Double	21	533	6,500	2,902
ZCS4301	4.0 - 4.50	102 - 114	Double	21	533	6,000	2,678

Dual Weave – these grips are designed with a ring to support electric cabling from termination point to reduce strain on the connections.
304 stainless steel.



Slingco part no.	Cable dia min inches (mm)	Cable dia max inches (mm)	Ø A inches (mm)	B inches (mm)	Ø C inches (mm)	D inches (mm)	E inches (mm)	F inches (mm)	Approx. breaking strength lb (kg)
ZCS2208	0.2 (5.1)	0.25 (6.4)	1.25 (31.8)	1.12 (28.4)	0.31 (7.9)	0.281 (7.1)	0.125 (3.2)	3 (76)	500 (225)
ZCS2209	0.31 (7.9)	0.375 (9.5)	1.25 (31.8)	1.12 (28.4)	0.437 (11.1)	0.281 (7.1)	0.125 (3.2)	4 (102)	750 (340)
ZCS2210	0.41 (10.4)	0.5 (12.7)	1.25 (31.8)	1.12 (28.4)	0.562 (14.3)	0.281 (7.1)	0.125 (3.2)	5 (127)	750 (340)
ZCS2211	0.5 (12.7)	0.625 (15.9)	1.25 (31.8)	1.12 (28.4)	0.687 (17.4)	0.281 (7.1)	0.125 (3.2)	6 (152)	1,200 (540)
ZCS2212	0.61 (15.5)	0.75 (19.1)	1.25 (31.8)	1.12 (28.4)	0.812 (20.6)	0.281 (7.1)	0.125 (3.2)	7 (178)	1,200 (540)
ZCS2213	0.71 (18.0)	0.875 (22.2)	1.25 (31.8)	1.12 (28.4)	0.937 (23.8)	0.281 (7.1)	0.125 (3.2)	7½ (178)	1,000 (450)
ZCS2214	0.77 (19.6)	0.937 (23.8)	1.25 (31.8)	1.12 (28.4)	0.948 (24.1)	0.219 (5.6)	-	8 (203)	800 (360)
ZCS2215	0.31 (7.9)	0.375 (9.5)	1.75 (44.5)	1.62 (41.1)	0.437 (11.1)	0.281 (7.1)	0.125 (3.2)	4 (102)	500 (225)
ZCS2216	0.41 (10.4)	0.5 (12.7)	1.75 (44.5)	1.62 (41.1)	0.562 (14.3)	0.281 (7.1)	0.125 (3.2)	5 (127)	750 (340)
ZCS2217	0.5 (12.7)	0.625 (15.9)	1.75 (44.5)	1.62 (41.1)	0.687 (17.4)	0.281 (7.1)	0.125 (3.2)	6 (152)	1,000 (450)
ZCS2218	0.61 (15.5)	0.75 (19.1)	1.75 (44.5)	1.62 (41.1)	0.812 (20.6)	0.281 (7.1)	0.125 (3.2)	7 (178)	1,000 (450)
ZCS2219	0.71 (18.0)	0.875 (22.2)	1.75 (44.5)	1.62 (41.1)	0.937 (23.8)	0.281 (7.1)	0.125 (3.2)	7 ½ (190)	1,000 (450)
ZCS2220	0.82 (20.8)	1 (25.4)	1.75 (44.5)	1.62 (41.1)	1.062 (27.0)	0.281 (7.1)	0.125 (3.2)	8 ½ (215)	1,000 (450)
ZCS2221	0.915 (23.2)	1.125 (28.6)	1.75 (44.5)	1.62 (41.1)	1.187 (30.1)	0.281 (7.1)	0.125 (3.2)	9 (229)	1,500 (680)
ZCS2222	1.02(25.9)	1.25 (31.8)	1.75 (44.5)	1.62 (41.1)	1.312 (33.3)	0.281 (7.1)	0.125 (3.2)	10 (254)	1,000 (450)
ZCS2223	1.18 (30.0)	1.437 (36.5)	1.75 (44.5)	1.62 (41.1)	1.448 (36.8)	0.219 (5.6)	-	10½ (265)	500 (225)
ZCS2224	0.5 (12.7)	0.625 (15.9)	2.25 (57.2)	2.12 (53.8)	0.687 (17.4)	0.281 (7.1)	0.125 (3.2)	6 (152)	1,000 (450)
ZCS2225	0.71 (18.0)	0.875 (22.2)	2.25 (57.2)	2.12 (53.8)	0.937 (23.8)	0.281 (7.1)	0.125 (3.2)	7 ½ (178)	1,000 (450)
ZCS7384	0.82 (20.8)	1.00 (25.4)	2.25 (57.2)	2.12 (53.8)	1.62 (41)	0.281 (7.1)	0.125 (3.2)	8 ½ (215)	1,000 (450)
ZCS2226	0.915 (23.2)	1.125 (28.6)	2.25 (57.2)	2.12 (53.8)	1.187 (30.1)	0.281 (7.1)	0.125 (3.2)	9 (229)	1,500 (680)
ZCS2227	1.02 (25.9)	1.25 (31.8)	2.25 (57.2)	2.12 (53.8)	1.312 (33.3)	0.281 (7.1)	0.125 (3.2)	10 (254)	1,800 (815)
ZCS2228	1.22 (31.0)	1.5 (38.1)	2.25 (57.2)	2.12 (53.8)	1.562 (39.7)	0.281 (7.1)	0.125 (3.2)	11 (279)	1,800 (815)
ZCS2229	1.43 (36.3)	1.75 (44.5)	2.25 (57.2)	2.12 (53.8)	1.812 (46.0)	0.281 (7.1)	0.125 (3.2)	13 (330)	700 (315)
ZCS2230	1.18 (30.0)	1.937 (49.2)	2.25 (57.2)	2.12 (53.8)	1.948 (49.5)	0.219 (5.6)	-	14½ (365)	350 (155)
ZCS2231	0.82 (20.8)	1 (25.4)	2.75 (69.9)	2.62 (66.5)	1.062 (27.0)	0.281 (7.1)	0.125 (3.2)	8 ½ (215)	1,000 (450)
ZCS2232	1.02 (25.9)	1.25 (31.8)	2.75 (69.9)	2.62 (66.5)	1.312 (33.3)	0.281 (7.1)	0.125 (3.2)	10 (254)	1,500 (680)
ZCS2233	1.22 (31.0)	1.5 (38.1)	2.75 (69.9)	2.62 (66.5)	1.562 (39.7)	0.281 (7.1)	0.125 (3.2)	11 (279)	1,500 (680)
ZCS2234	1.43 (36.3)	1.75 (44.5)	2.75 (69.9)	2.62 (66.5)	1.812 (46.0)	0.281 (7.1)	0.125 (3.2)	13 (330)	1,800 (815)
ZCS2235	1.64 (41.7)	2 (50.8)	2.75 (69.9)	2.62 (66.5)	2.062 (52.4)	0.281 (7.1)	0.125 (3.2)	15 (381)	1,800 (815)
ZCS2236	1.84 (46.7)	2.25 (57.2)	2.75 (69.9)	2.62 (66.5)	2.312 (58.7)	0.281 (7.1)	0.125 (3.2)	16 (406)	1,500 (680)
ZCS2237	2.062 (52.4)	2.469 (62.7)	2.75 (69.9)	2.62 (66.5)	2.489 (63.2)	0.219 (5.6)	-	17½ (444)	1,500 (680)
ZCS2238	1.375 (34.9)	1.75 (44.5)	3.25 (82.6)	3.12 (79.2)	1.812 (46.0)	0.281 (7.1)	0.125 (3.2)	13 (330)	2,000 (905)
ZCS2239	1.75 (44.5)	2 (50.8)	3.25 (82.6)	3.12 (79.2)	2.062 (52.4)	0.281 (7.1)	0.125 (3.2)	15 (381)	2,000 (905)
ZCS2240	1.84 (46.7)	2.25 (57.2)	3.25 (82.6)	3.12 (79.2)	2.312 (58.7)	0.281 (7.1)	0.125 (3.2)	16 (406)	2,000 (905)
ZCS2241	2.125 (54.0)	2.5 (63.5)	3.25 (82.6)	3.12 (79.2)	2.562 (65.1)	0.281 (7.1)	0.125 (3.2)	17½ (444)	2,000 (905)
ZCS2242	2.5 (63.5)	2.875 (73.0)	3.25 (82.6)	3.12 (79.2)	2.918 (74.1)	0.219 (5.6)	-	19 (483)	2,000 (905)

DELUXE CORD GRIPS



Deluxe Cord Grips provide strain relief and bend support for cables running into machinery and connection boxes. Select the deluxe grip that fits the NPT size being connected to. Available with Straight Male, 90 Degree Male, 45 Degree Male and Straight Female Aluminum NPT connections. The 304 stainless steel wire mesh grip is sized to provide bend support and pull out resistance for the cable range listed.



Range		Straight Male	90° Male	Straight Female
in	mm	Slingco Part No.	Slingco Part No.	Slingco Part No.
3/8" NPT				
0.19 - 0.25	4.8 - 6.4	ZCS7713	ZCS7717	
0.25 - 0.31	6.4 - 7.9	ZCS7714	ZCS7718	
0.31 - 0.38	7.9 - 9.7	ZCS7715	ZCS7719	
0.38 - 0.44	9.7 - 11.2	ZCS7716	ZCS7720	
1/2" NPT				
0.19 - 0.25	4.8 - 6.4	ZCS7721	ZCS7727	ZCS7735
0.25 - 0.38	6.4 - 9.6	ZCS7722	ZCS7728	ZCS7736
0.38 - 0.50	9.7 - 12.7	ZCS7723	ZCS7729	ZCS7737
0.50 - 0.63	12.7 - 16.0	ZCS7724	ZCS7730	ZCS7738
0.63 - 0.75	16.0 - 19.1	ZCS7725		
0.75 - 0.88	19.1 - 22.4	ZCS7726		
3/4" NPT				
0.25 - 0.38	6.4 - 9.7	ZCS7739	ZCS7744	ZCS7752
0.38 - 0.50	9.7 - 12.7	ZCS7740	ZCS7745	ZCS7753
0.50 - 0.63	12.7 - 16.0	ZCS7741	ZCS7746	ZCS7754
0.63 - 0.75	16.0 - 19.1	ZCS7742	ZCS7747	ZCS7755
0.75 - 0.88	19.1 - 22.4	ZCS7743		
1" NPT				
0.44 - 0.56	11.2 - 14	ZCS7887	ZCS7894	ZCS7904
0.56 - 0.69	14 - 17.5	ZCS7888	ZCS7895	ZCS7905
0.63 - 0.75	16 - 19.1	ZCS7889	ZCS7896	ZCS7906
0.75 - 0.88	19.1 - 22.4	ZCS7890	ZCS7897	ZCS7907
0.88 - 1.00	22.4 - 25.4	ZCS7891	ZCS7898	ZCS7908
1.00 - 1.13	25.4 - 28.7	ZCS7892		
1.13 - 1.25	28.7 - 31.8	ZCS7893		
1.25" NPT				
0.75 - 0.88	19.1 - 22.4	ZCS7909	ZCS7914	
0.88 - 1.00	22.4 - 25.4	ZCS7910	ZCS7915	
1.00 - 1.13	25.4 - 28.7	ZCS7911	ZCS7916	
1.13 - 1.25	28.7 - 31.8	ZCS7912	ZCS7917	
1.25 - 1.38	31.8 - 35.1	ZCS7913	ZCS7918	
1.5" NPT				
0.75 - 0.88	19.1 - 22.4	ZCS7919	ZCS7929	
0.88 - 1.00	22.4 - 25.4	ZCS7920	ZCS7930	
1.00 - 1.13	25.4 - 28.7	ZCS7921	ZCS7931	
1.13 - 1.25	28.7 - 31.8	ZCS7922	ZCS7932	
1.25 - 1.38	31.8 - 35.1	ZCS7923	ZCS7933	
1.31 - 1.44	33.3 - 36.6	ZCS7924		
1.44 - 1.56	36.6 - 39.6	ZCS7925		
1.56 - 1.69	39.6 - 43.0	ZCS7926		
1.69 - 1.81	43.0 - 46.0	ZCS7927		
1.75 - 1.88	44.5 - 47.8	ZCS7928		
2" NPT				
1.25 - 1.38	31.8 - 35.1	ZCS7934	ZCS7945	
1.31 - 1.44	33.3 - 36.6	ZCS7935	ZCS7946	
1.44 - 1.56	36.6 - 39.6	ZCS7936	ZCS7947	
1.56 - 1.69	39.6 - 43.0	ZCS7937	ZCS7948	
1.69 - 1.81	43.0 - 46.0	ZCS7938	ZCS7949	
1.75 - 1.88	44.5 - 47.8	ZCS7939	ZCS7950	
1.81 - 1.94	45.9 - 49.3	ZCS7940		
1.94 - 2.06	49.3 - 52.3	ZCS7941		
2.06 - 2.19	52.3 - 55.5	ZCS7942		
2.19 - 2.31	55.5 - 58.7	ZCS7943		
2.31 - 2.44	58.7 - 61.9	ZCS7944		

DELUXE CORD GRIPS (CONTINUED)



Range		Straight Male	90° Male	Straight Female
in	mm	Slingco Part No.	Slingco Part No.	Slingco Part No.
2.5" NPT				
1.69 - 1.81	43.0 - 46.0	ZCS7951		
1.81 - 1.94	45.9 - 49.3	ZCS7952		
1.94 - 2.06	49.3 - 52.3	ZCS7953		
2.06 - 2.19	52.3 - 55.5	ZCS7954		
2.19 - 2.31	55.5 - 58.7	ZCS7955		
2.31 - 2.44	58.7 - 31.9	ZCS7956		
3.0" NPT				
1.69 - 1.81	43.0 - 46.0	ZCS7957		
1.81 - 1.94	45.9 - 49.3	ZCS7958		
1.94 - 2.06	49.3 - 52.3	ZCS7959		
2.06 - 2.19	52.3 - 55.5	ZCS7960		
2.19 - 2.31	55.5 - 58.7	ZCS7961		
2.31 - 2.44	58.7 - 31.9	ZCS7962		
2.44 - 2.63	62.0 - 66.5	ZCS7963		
2.63 - 2.81	66.5 - 71.4	ZCS7964		
2.81 - 3.00	71.4 - 76.2	ZCS7965		
3.00 - 3.25	76.2 - 82.6	ZCS7966		

DUST-TIGHT CORD GRIPS



Dust-Tight Cord Grips provide strain relief and bend support for cables running into machinery and connection boxes. Select the deluxe grip that fits the NPT size being connected to. Available with Straight Male, 90 Degree Male, 45 Degree Male and Straight Female Aluminum NPT connections. The wire mesh grip is sized to provide bend support and pull out resistance for the cable range listed. Galvanized wire mesh.

Range		NPT	Insulated	Non-insulated
in	mm	Size	Slingco Part No.	Slingco Part No.
0.22 - 0.32	5.6 - 8.1	1/2"	ZCS7674	ZCS7756
0.30 - 0.43	7.6 - 10.9	1/2"	ZCS7675	ZCS7757
0.40 - 0.54	10.1 - 13.7	1/2"	ZCS7676	ZCS7758
0.52 - 0.73	13.2 - 18.5	3/4"	ZCS7677	ZCS7759
0.70 - 0.97	17.8 - 24.6	1"	ZCS7678	ZCS7760
0.94 - 1.25	23.8 - 31.8	1.25"	ZCS7679	ZCS7761
1.20 - 1.50	30.5 - 38.1	1.5"	ZCS7680	
1.40 - 1.75	38.1 - 44.5	2"	ZCS7681	
1.62 - 2.00	41.1 - 50.8	2.5"	ZCS7682	
2.00 - 2.45	50.8 - 62.2	2.5"	ZCS7683	

CAN'T FIND THE SPECIFICATION YOU NEED?

Call or email for full ranges plus custom manufacture options

888 685 9478

sales@slingcoamerica.com

WIND TURBINE SUPPORT GRIP - HEAVY DUTY THIMBLE OFFSET EYE

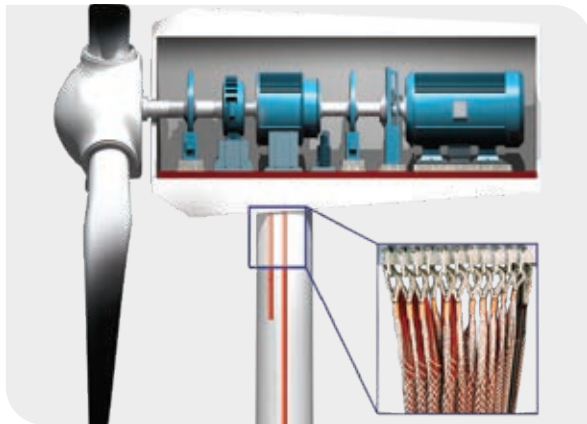


Slingco has developed a range of cable grips tailored for the renewable energy sector for use in:

- Cable installation – on-shore and off-shore
- Cable support inside wind turbines
- Cable management

For wind turbines, special features have been adapted to allow for minimal contact with the actual cable while still allowing excellent working loads and cable support.

The Slingco Wind Turbine Support Grip is manufactured from 316 Stainless Steel and provides cable support and control inside the wind turbine. It features rounded copper ferrules and offers reduced cable contact for high vibration environments. Custom grips can be adapted to meet any requirement.

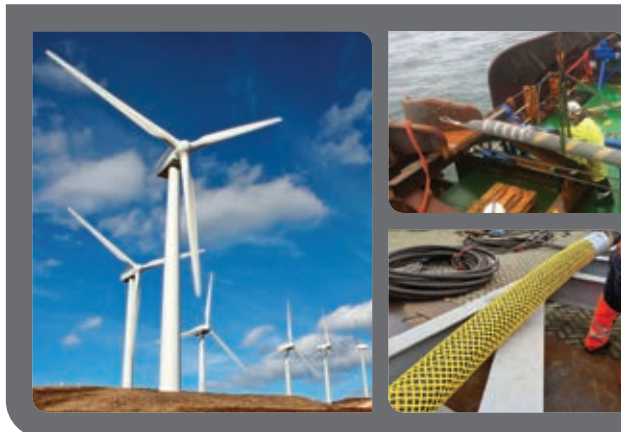


Slingco Part No	Range		Lattice Length		Approx. Break Load	
	in	mm	in	mm	lb	kg
ZCS2844	0.31 - 0.40	8 - 10	19	480	1,455	660
ZCS2845	0.40 - 0.60	10 - 15	17.25	438	2,284	1,036
ZCS2846	0.60 - 0.80	15 - 20	16.75	426	2,901	1,316
ZCS2847	0.80 - 0.99	20 - 25	18	461	4,586	2,080
ZCS2848	1.0 - 1.19	25 - 30	16.25	413	5,467	2,480
ZCS2849	1.20 - 1.58	30 - 40	18.5	470	7,716	3,500
ZCS2850	1.58 - 1.98	40 - 50	32.5	825	10,781	4,890
ZCS2851	1.98 - 2.37	50 - 60	33	840	10,791	4,895
ZCS2852	2.38 - 2.77	60 - 70	31	788	14,163	6,424
ZCS2853	2.77 - 3.55	70 - 90	44.5	1,135	14,163	6,424
ZCS2854	3.55 - 4.33	90 - 110	31.5	799	18,367	8,331

EXTENDED THIMBLE EYE HEAVY DUTY DOUBLE WEAVE STAINLESS STEEL CABLE GRIP



Slingco Part No	Range		Lattice Length		Eye Extension Length		Approx. Break Load	
	in	mm	in	mm	in	mm	lb	kg
ZCS2870	0.39 - 0.60	10 - 15	20	500	20	350	2,295	1,040
ZCS2871	0.60 - 0.80	15 - 20	20	500	20	350	2,903	1,315
ZCS2872	0.80 - 0.99	20 - 25	20	500	20	350	4,590	2,082
ZCS2873	1.0 - 1.19	25 - 30	20	500	20	350	5,468	2,480
ZCS2874	1.20 - 1.58	30 - 40	20	500	20	350	7,898	3,582



Slingco: committed to the Renewable Energy sector

We offer a range of cable grips tailored to the renewable energy sector. Applications include cable installation (on-shore and off-shore), support of cables inside wind turbines and general cable management. We have also developed a range of cable pulling grips for use in the installation of inter-array and export cables from offshore wind farm installations.

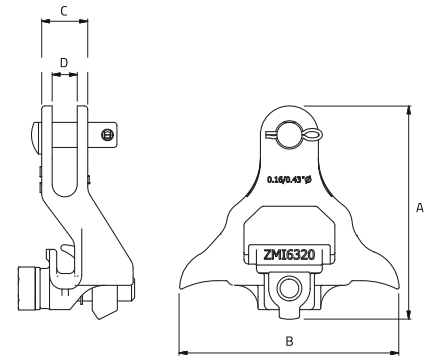
In addition to our existing ranges, custom grips can be designed to meet any requirement.

Contact us at **888 685 9478** or email sales@slingcoamerica.com for details.

POLE LINE SUSPENSION CLAMPS



Slingco suspension conductor clamps provide safe and quick installation and removal of the conductor when attached to the insulator. A single fastener fully opens and closes the jaw. The clamps come in a variety of sizes to accommodate conductors from 0.16 to 1.50 inch diameter, and loadings of up to 18,000 lbs. To prevent loss, all moving parts of the clamps are captive. Suitable for hot line work.



Depending on size, the clamps are either made from heat treated aluminum alloy 356-T6 or ductile iron 60-45-15 and hot dip galvanized for corrosion resistance.

Slingco Part No.	Range (in)	Material	A (in)	B (in)	C (in)	D (in)	Load (lb)
ZMI6320	0.16 – 0.43	Ductile iron	5.36	5.51	1.16	0.63	10,000
ZMI6321	0.30 – 0.70	Ductile iron	8.03	6.34	1.38	0.63	18,000
ZMI6322	0.50 – 0.687	Aluminum alloy 356-T6	6.22	6.89	1.61	0.63	12,000
ZMI6323	0.68 – 1.00	Aluminum alloy 356-T6	8.37	6.89	1.73	0.63	12,000
ZMI6324	1.00 – 1.313	Aluminum alloy 356-T6	9.53	6.97	1.74	0.63	12,000

HOLD DOWN WEIGHTS



Slingco's Hold Down Weights for transmission work are made from ductile cast iron with corrosion resistant zinc rich organic paint finish. 1" center through-hole rod mounting design for easy and secure deployment.

Slingco Part No.	Weight (lb)	Dimensions (in)
HMI5126	67	7.5 \varnothing x 6
HMI5127	100	9 \varnothing x 6

POLE STAPLES

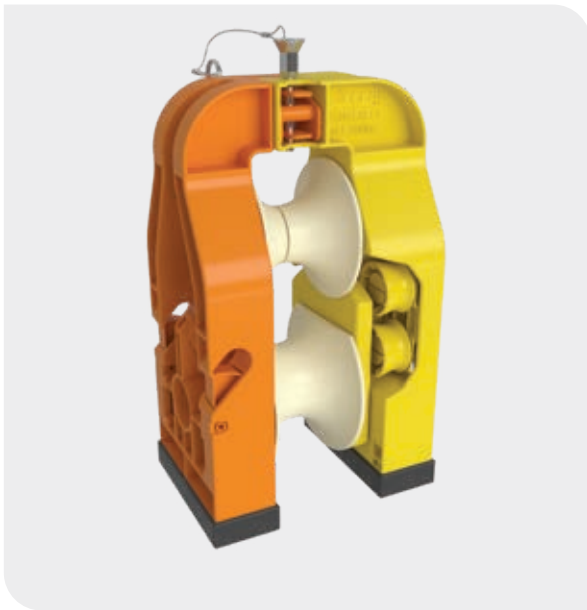


Slingco Staples are used to securely hold grounding and bonding wires while insulating the wire from the staple. The insulation minimizes TV and Radio Frequency Interference by preventing sparks. The insulator ensures that current cannot flow into the staple that could cause fires on the pole. The insulator also acts as a barrier to corrosion caused by contact with ground wires.

- Securely hold grounding and bonding wires
- Insulated inserts
- Barbed and non-barbed styles

Slingco Part No.	Description	For Use With Wire
ZMI6326	30mm (1.5") x 6.35mm (0.25") x 3.75mm (0.148") Galvanised barbed wood staple with TVI insulator	#6, #8 & #10 solid CU wire
ZMI6327	50.8mm (2") x 14.3mm (9/16") x 6.35mm (0.25") Galvanised bonding wire staple with TVI insulator	#4 CU wire

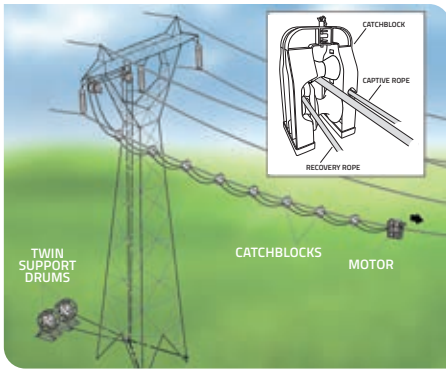
CATCHBLOCK OHL CATENARY ROLLER



The challenges faced by the OHL industry due to the growing number of infrastructure projects built beneath existing transmission and distribution networks - alongside increasingly stringent OHL regulations - can make maintenance costly, time-consuming and challenging. Lightweight, robust and easy to deploy, CatchBlock helps overcome these issues, increasing efficiency and reducing costs.

CatchBlock is an innovative overhead line (OHL) catenary roller system. Designed to deploy a two-rope system, it allows the recovery of broken conductors without the need to take possession of client/third party property or infrastructure.

Though the majority of off-the-shelf systems offer efficient single rope deployment, they frequently fail to meet the specifications required by third party clients who own property below overhead conductors. The CatchBlock system not only satisfies the most demanding requirements, but also - because it removes the need to close down essential infrastructure for conductor repairs or in the event of an emergency - its use means that estimating the costs of maintenance and refurbishment schemes is made far easier and more accurate.



KEY PRODUCT FEATURES

- Ropes are secured in position in the CatchBlock frame, avoiding the need for ferrules to be moulded or bonded to their outer surface
- Both ropes are tensioned simultaneously, hence the CatchBlock does not turn or flip
- Ropes are controlled to avoid build-up of slack in any sub-spans
- Both ropes are identical and have the same external marking to indicate where the CatchBlock is to be fitted
- One rope is contained in the main housing of the CatchBlock, the frame needs to be opened to allow the second rope to be installed

CONDUCTOR REPLACEMENT ROLLER



The Conductor Replacement Roller (CRR) provides a simple, conductor-deployed protection system using a lightweight aramid rope.

The CRR unit enables the safe exchange of conductors in three easy steps:

1. Laying out the pulling cable, e.g. with an electric pulling robot.
2. Tensioning the CRR Block assembly.
3. Feeding a new conductor through the cable pulleys of the CRR Block.

The CRR rollers have spring loaded gripping feature to secure the rope laterally without impinging any rotational movement as the rollers rotate around the axis of the conductor. Considerable effort has been made to reduce the complexity of the design to provide a simple mechanism to hold the rope and then connect around the conductor.

Designed for rapid deployment and secure connection the external locking mechanism can be inspected from ground level.

- 30% glass filled Nylon 6 from bespoke mould tooling.
- Bespoke design incorporates aperture of 65mm to accept smooth passage of joints and connectors.
- Type registered to industry standards
- Non conductive through use of insulating materials

CABLE PULLING GRIPS AND CABLE SUPPORT GRIPS

ASSESSMENT OF SUITABILITY

There are many factors that must be taken into account when assessing the suitability of a cable grip for a proposed application and trying to calculate a safe working load. These include:

- Size of cable grip in relation to size/shape of gripped object(s)
- Stability of object(s) when gripped
- Grip surface of object(s)
- Resistive force of object(s)
- Anticipated path of movement, including possible obstructions
- Approximate breaking strength of the cable grip
- Condition of cable grip
- Suitability and compatibility of any attachments used
- Environment / operating conditions
- Persons at risk

If you have any questions regarding suitability for any particular application please call the distributor who supplied the cable grip or our in-house Technical Department.

Please note: Slingco cable grips must be double steel banded securely before being pulled.

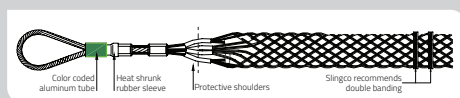
LATTICE DIMENSIONS

Lattice dimensions shown are as fitted to a nominal diameter of cable and prior 'free length' may be slightly longer than stated.

APPROXIMATE BREAK LOAD

This is the calculated average based on actual testing done by Slingco. Approximate break loads are quoted as a guide only.

TYPICAL CONFIGURATIONS



SAFE WORKING LOAD

Application load is normally calculated to be reduced by at least a factor of 5x the Approximate break load. Due to the wide variety of application parameters, the end user must apply a sensible safety factor to suit the safety requirements for the conditions of use.

The Safe Working Load (SWL) of a Slingco cable grip will depend on the Factor of Safety (FOS) applied to the Minimum Breaking Load.

FACTOR OF SAFETY (FOS)

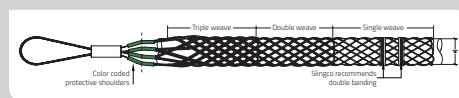
Where the operational risk is considered to be normal, it is recommended that a FOS of 5 be applied, for a high risk operation a FOS of at least 10 should be considered. It is impossible to catalog or guarantee a safety factor that will apply for all applications.

Approximate Break Loads stated on any certification, the recommended Factors of Safety, and any implied or stated fitness for purpose, are all only applicable when the cable grip is as new and unused.

A 20% variance in break loads must be allowed for when selecting a cable grip; a suitable swivel must be used if there is 'twist' in the cable.

Pulling devices should only be attached via the pulling eye.

Torsional stress must be dealt with when using grips for line pulls and wire splices. When twisting forces are present use a swivel that rotates under load to release torsional stress.



Cable Grip Safety Information

- Ensure that the cable grip mesh fits conductor correctly.
- Ensure that the conductor fits up to the mid-point of the protective shoulder.
- Band the ends of the cable grip when attaching the conductor. We recommend between 1¼" and 2¼" from the end of the cable grips.
- Never modify or attempt to repair any grip.
- Ensure proper maintenance of the cable grip. If in doubt call 888-685-9478.
- Check the condition of the cable grip, and that it is the correct size for the intended application - do not exceed the rated capacity.
- Grips that are worn, bent or otherwise damaged should not be used.
- Grips are only to be used for temporary installations
- Pulling devices should only be attached via the pulling eye. It is NOT recommended that grips or swivels be run over tensioners while under load.
- Cable grips must only be fitted and used by trained competent person(s).



SLINGCO CABLE GRIPS MUST NOT BE USED TO THEIR APPROXIMATE BREAKING STRENGTH. A SENSIBLE SAFETY FACTOR MUST ALWAYS BE USED. IF IN DOUBT CONTACT THE MANUFACTURER OR THE DISTRIBUTOR THAT SUPPLIED THE GRIP!

If you have any questions regarding suitability for any particular application please call 888-685-9478



IMPORTANT TECHNICAL INFORMATION

SINGLE AND DOUBLE EYE CABLE GRIP INSTRUCTIONS

PLEASE NOTE: The condition of the cable grip should always be checked prior to use. The correct size of grip should always be used for the intended application. The rated capacity of the grip should never be exceeded. Grips that are worn, bent or otherwise damaged should not be used.



Select the correct grip for the diameter of the conductor.



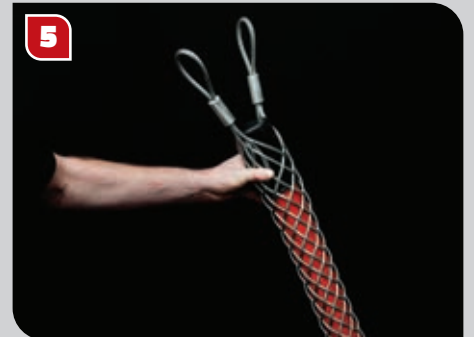
Prior to use, the lattice at the end of the grip needs to be widened. This can be easily achieved by pressing the end of the grip against a hard surface, which causes the lattice to expand.



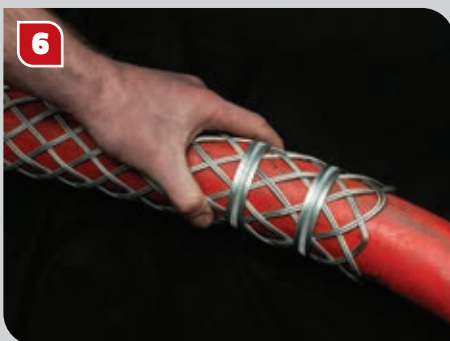
The grip should then be placed over the end of the conductor...



...and pushed over the conductor.



The grip then needs to be pushed along so that all the lattice is in contact with the conductor.



Once the cable grip is in place on the conductor, two clamps should be fitted to the end of the grip (as shown). We recommend between 1 ¼" (30mm) and 2 ¼" (55mm) away from the end of the cable grip.



Tape should then be wound around the end of the cable grip furthest away from the eye ends.



This will prevent the cable grip from snagging when in use.

LACE UP CABLE GRIP INSTRUCTIONS

PLEASE NOTE: The images shown here use double weave cable grips. When lacing single weave cable grips please use single wire lace; use double-laced for double weave cable grips; and use triple-laced for triple weave cable grips.



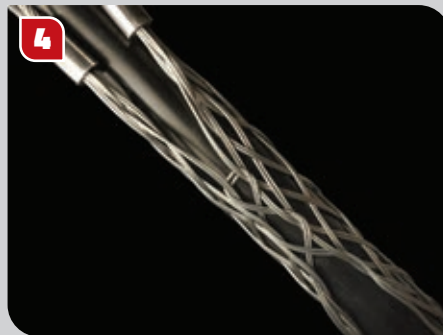
Start the lacing from the 'eye' end or anchoring end of the cable grip.



Thread the lace through the first two loops of the split and pull through until the laces are centered at this point.



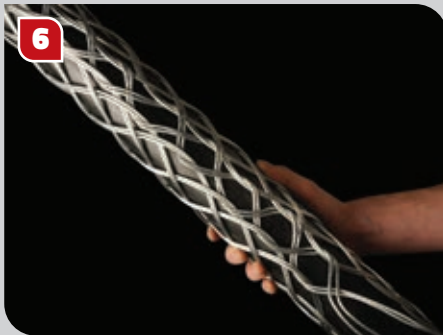
Don't pull the lace too tight at this stage. Leave a space between adjoining loops roughly equal to the width of one diamond of the mesh.



Continue down the length of the cable grip. Try to maintain equal tension and equal spacing throughout as this leads to a more stable and equal grip.



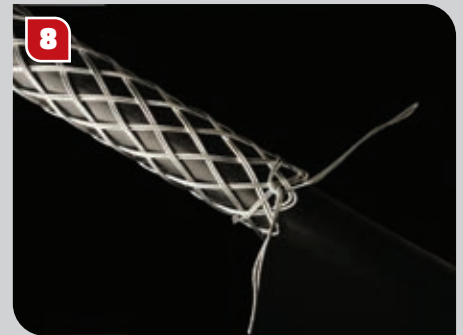
As you continue down the length, pull the open sides of the grip as wide apart as required.



Try to achieve an even and neat lace-up as this assists with the strength of the grip when pulling.



Finally, tie the ends of the lace once or twice round the end of the cable grip twisting the ends together securely. Excess lace can be cut off.



Add any additional support as required – banding is recommended. The Slingco cable grip is now ready to use.

 **888 685 9478**

 sales@slingcoamerica.com

 slingcoamerica.com



Slingco America, Inc., 3100 Jonquil Drive SE, Smyrna, GA 30080, USA · TOLL FREE: 888 685 9478 · Fax: 888 728 4047 · sales@slingcoamerica.com

Slingco makes no warranty, express or implied, with respect to these products nor with respect to their specifications. In no event shall Slingco be liable for any direct, indirect, punitive, incidental, special consequential damages to property or life, whatsoever, arising out of or connected with the use or misuse of these products. These products are intended for use by qualified professionals having adequate knowledge of their proper use. *March 2026 - v3.7*