

# C CONNECTORS

## ⚠ WARNING

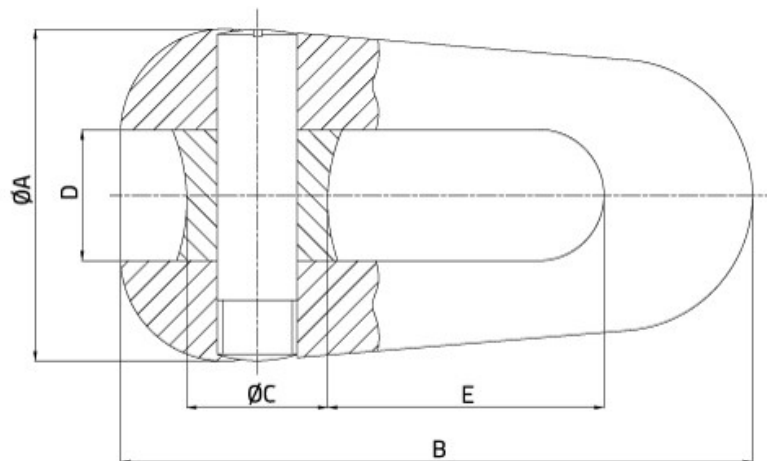
Cancer and Reproductive Harm: [www.P65Warnings.ca.gov](http://www.P65Warnings.ca.gov)



## KEY FEATURES

- ✓ Working loads from 10 to 250kN
- ✓ Available in seven sizes

Use to connect rope, swivels and other objects.



No.	Model	A (mm)	A (in)	B (mm)	B (in)	C (mm)	C (in)	D (mm)	D (in)	E (mm)	E (in)	d Pin dia (mm)	d Pin dia (in)	Working load (kN)	Weight (kg)
1	SLU-1	36	36	68	68	18	18	14	14	29	29	10	10	10	0.2
2	SLU-3	37	37	76	76	20	20	17	17	31	31	12	12	30	0.23
3	SLU-5	50	50	96	96	23	23	19	19	42	42	18	18	50	0.6
4	SLU-8	56	56	110	110	28	28	22	22	50	50	20	20	80	0.8
5	SLU-10	59	59	126	126	30	30	26	26	54	54	22	22	100	1.2
6	SLU-13	61	61	134	134	32	32	27	27	56	56	24	24	130	1.3
7	SLU-25	80	80	178	178	44	44	35	35	72	72	30	30	250	3.0

This information is for marketing purposes only. The details contained herein is presented as general information and no representation or warranty is expressly or impliedly given as to its accuracy, completeness or correctness. It does not constitute part of a legal offer or contract. For technical specifications, please contact Slingco Limited.



## GET IN TOUCH

☎ 01706 855 558

✉ [sales@slingco.com](mailto:sales@slingco.com)

# C CONNECTORS

## Dimensions

The figures shown are indicative only. Fully dimensioned data-sheets are available on request. Nominal figures/actuals are as per data-sheet with tolerances of +/-10%. Please contact us if you have any questions.

**Range dimension overlaps** If the cable, rope or hose you have lies where ranges overlap, e.g. 1" when sizing is 0.5-1.00 and 1.00-1.5 we recommend that you select your cable grip to achieve break load first. If tensile strengths are equal or both adequate, choose the smaller of the two. Please contact us if you have any questions.



GET IN TOUCH

 01706 855 558

 [sales@slingco.com](mailto:sales@slingco.com)